



Public Meeting Information

Asian Citrus Psyllid Control Program



CDFA REPORT A PEST HOTLINE:
1.800.491.1899
www.cdfa.ca.gov/go/reportapest

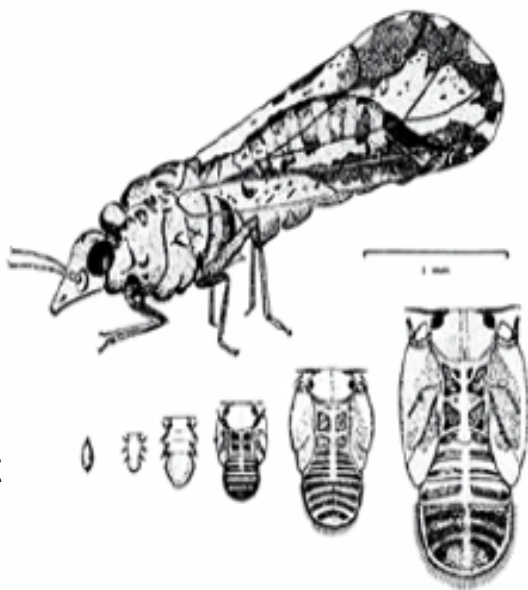
Asian Citrus Psyllid (ACP) Lifecycle



CITRUS PEST & DISEASE
PREVENTION DIVISION
CALIFORNIA DEPARTMENT OF FOOD AND AGRICULTURE

ACP Lifecycle

- Eggs laid singly
- 5 nymphal stages
- 10 generations / year
- Life cycle takes 15-47 days
- Egg to adult in 2 weeks at 75-80° F



ACP Life Stages



Eggs



Nymphs with wax exudate



Adult ACP



Adult feeding with nymphs

CDFA REPORT A PEST HOTLINE: 1.800.491.1899
www.cdfa.ca.gov/go/reportapest



Huanglongbing (HLB)

PEST HOTLINE: 1.800.491.1899



CITRUS PEST & DISEASE
PREVENTION DIVISION
CALIFORNIA DEPARTMENT OF FOOD AND AGRICULTURE



Lopsided fruit with aborted seeds



Asymmetric leaf mottling



Blotchy mottle



Yellow Veins



HLB, also known as Citrus Greening Disease or Yellow Shoot Disease, is a very destructive bacterial disease of citrus and citrus relatives. It is spread primarily by psyllid insect vectors and through grafting with infected budwood. HLB represents a serious threat to the citrus industry worldwide and especially in California. Three separate strains of HLB have been discovered and identified: Asian, African (South Africa) and South American (Brazil).

Symptoms include yellow shoots, leaf mottle, small upright leaves and lopsided fruits with a bitter flavor. There is no known control or cure for this disease once a tree becomes infected. Diseased trees are non-productive, have a shortened lifespan and must be removed and destroyed to prevent further spread of HLB.

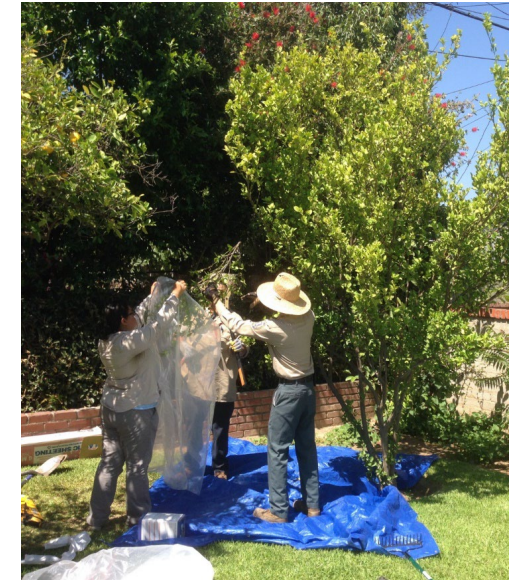
This disease is spread readily by the ACP (*Diaphorina citri*), which is widespread in Florida, Texas, Hawaii, Southern California and Mexico. The insect vector (both adults and nymphs) feed on the new growth flush. Orange jasmine (*Murraya paniculata*), an ornamental citrus relative, is the preferred host for the psyllid, although all citrus species are hosts. The Asian strain of HLB was discovered for the first time in August 2005 in Florida, in Texas in February 2012 and in Southern California in March 2012. The first HLB infected citrus tree in California (a pummelo, grafted on lemon) was found in Hacienda Heights, Los Angeles County.

If you suspect you have citrus with HLB disease – based on the presence of the symptoms described or the insect vector – please contact the California Department of Food and Agriculture at 1-800-491-1899.



Tree Removal

- If a tree is confirmed by CDFA as positive for the bacteria that causes HLB it will decline in health and die.
 - It might appear healthy now, but the disease is damaging the tree's vascular system and causing the tree to starve for nutrients.
 - The diseased tree is considered a nuisance as it poses a threat to citrus trees in the surrounding community.
- There is no cure for HLB, and all confirmed positive trees must be removed.
 - CDFA will take great care with the residential property while conducting the tree removal.



**PEST HOTLINE:
1.800.491.1899**



**CITRUS PEST & DISEASE
PREVENTION DIVISION**
CALIFORNIA DEPARTMENT OF FOOD AND AGRICULTURE

Survey

CDFA staff will survey the area for the ACP and HLB disease symptoms.



**PEST HOTLINE:
1.800.491.1899**



**CITRUS PEST & DISEASE
PREVENTION DIVISION**
CALIFORNIA DEPARTMENT OF FOOD AND AGRICULTURE

- If ACP is found on your property, a CDFA surveyor will collect leaf samples from the host tree where the psyllid was found and collect any life stages of the ACP from host trees.
- Host plants include all citrus varieties and hybrids, including kumquat, mandarin, grapefruit, orange, lemon and lime; also including closely related plants like curry leaf and ornamental orange-jasmine.
- All plant samples are bagged and shipped to the CDFA Laboratory in Sacramento, California for analysis.
- If the sample is confirmed positive for HLB disease, the resident will be notified.

Treatment

**PEST HOTLINE:
1.800.491.1899**



**CITRUS PEST & DISEASE
PREVENTION DIVISION**
CALIFORNIA DEPARTMENT OF FOOD AND AGRICULTURE

**CDFA will be treating citrus trees
to eradicate the ACP.**

**Treatment will be applied by a
professional applicator or CDFA staff.**



CDFA REPORT A PEST HOTLINE: 1.800.491.1899
www.cdffa.ca.gov/go/reportapest



Active Ingredients

The ACP treatment program uses products containing the active ingredients imidacloprid and beta-cyfluthrin. The products used by CDFA are the same formulation as products that can be purchased at local home and garden centers.

Imidacloprid is a systemic insecticide, in a group of chemicals called neonicotinoids. It is available in a variety of home garden use products and flea treatments for dogs and cats.

Beta-cyfluthrin is a foliar applied synthetic pyrethroid insecticide, similar to a compound produced by chrysanthemum flowers. Pyrethroids are one of the most common household insecticides used today. Beta-cyfluthrin products are used in homes, restaurants, hospitals, food processing plants and gardens.

**PEST HOTLINE:
1.800.491.1899**



**CITRUS PEST & DISEASE
PREVENTION DIVISION**
CALIFORNIA DEPARTMENT OF FOOD AND AGRICULTURE



From a Local Home Improvement Store

Beta-Cyfluthrin Product, Imidacloprid Product, Pyrethroid Product

Notifications

Properties will be notified at least 48 hours in advance, with a blue notification notice that will have a scheduled treatment date.

**CALIFORNIA DEPARTMENT OF FOOD AND AGRICULTURE
COUNTY AGRICULTURAL COMMISSIONER'S OFFICE**

**OFFICIAL NOTICE
ADVANCE NOTIFICATION OF INSECTICIDE TREATMENT**

An infestation of the Asian citrus psyllid (ACP) has been detected in your neighborhood. To prevent the spread of this pest, the California Department of Food and Agriculture (CDFA) has implemented a voluntary treatment program whereby treatments are applied to host plants within designated areas.

The insecticide Tempo® SC Ultra (cyfluthrin), a pyrethroid, and Merit® 2F or CoreTect™ (imidacloprid) will be applied to all citrus trees and host shrubs located on your property. These insecticides kill adult and/or immature ACP present on your citrus trees or host shrubs. The insecticides are applied using ground-based equipment.

By allowing CDFA to treat the citrus trees on your property, you will be making a huge contribution to the suppression of this invasive pest. **The treatment is free of charge.**

Your property is scheduled for treatment on _____, unless you call the Exotic Pest Hotline at **(800) 491-1899**. Additionally, please call the Exotic Pest Hotline if you have any questions or a situation that requires special attention. Unfavorable weather conditions, such as rain or wind, may cause the treatment to be rescheduled.

You do not need to be present during the treatment as long as treatment staff have access to your property, including the backyard. The treatment takes only a few minutes if you take the following steps:

- Leave your gates unlocked.
- If possible, temporarily secure any pets and their food and water dishes indoors.
- Close your doors and windows. They may be opened after treatment is complete.
- Move items such as barbecues, lawn furniture, toys, etc. away from your trees and shrubs.

It is **not** necessary to harvest all of the citrus fruit from your trees before the treatment begins. Any fruit to be picked on or after the treatment date can be left on the tree and harvested after the area has dried.

After the treatment is completed:

- Avoid contact with treated area until the treated area is dry.
- Contact our project office before moving any citrus plant material from your property.

Please visit our website to learn more about this pest <http://www.cdffa.ca.gov/phpps/acp/>

Thank you for your cooperation.

Block Number: _____ Date: _____
(Please refer to this block number when contacting our office)

40-232 (12/14)

If we are unable to treat, we will leave a green notification with the reason and a new treatment date.

**CALIFORNIA DEPARTMENT OF FOOD AND AGRICULTURE
COUNTY AGRICULTURAL COMMISSIONER'S OFFICE**

WE WERE UNABLE TO TREAT YOUR PROPERTY

Your property was scheduled for Asian citrus psyllid treatment on _____.

We were unable to treat as planned due to the reason(s) checked below:

Your gate was locked or a dog was present. Your property has been rescheduled for treatment on _____. Please unlock your gate and/or restrain your dog on the date of your scheduled treatment.

Rain and/or wind. Your property has been rescheduled for treatment on _____.

Other: Please call our office at 800-491-1899.
Reason: _____

In order to stop the spread of the Asian citrus psyllid, it is important that all properties within the treatment area are treated with the insecticide applications in a timely manner.

If you need to make special arrangements for this treatment, or if you have any questions or concerns, please call our office at **(800) 491-1899**.

Please visit our website to learn more about this pest <http://www.cdffa.ca.gov/phpps/acp/>

This treatment is free of charge.

Thank you for your cooperation.

Block Number _____ Date _____
(Please refer to this block number when contacting our office)
60-233 (4/15)

**PEST HOTLINE:
1.800.491.1899**

Upon completion of treatment you will receive a yellow notification.

**CALIFORNIA DEPARTMENT OF FOOD AND AGRICULTURE
COUNTY AGRICULTURAL COMMISSIONER'S OFFICE**

NOTICE OF INSECTICIDE TREATMENT

The California Department of Food and Agriculture (CDFA) has detected the Asian citrus psyllid (ACP), a serious insect pest, or Huanglongbing (HLB), a deadly citrus disease, in your neighborhood.

On _____ at approximately _____ A.M. / P.M., your property was treated with the insecticide(s) checked below. By allowing CDFA to perform emergency treatment of citrus trees on your property, you have made a huge contribution to the suppression of this invasive pest, which poses an imminent threat to California's environment and economy. If you have any questions, please call the Project Office at **(800) 491-1899**.

To learn more about the ACP and HLB, please visit the CDFA website: <http://www.cdffa.ca.gov/phpps/acp/>

Tempo® SC Ultra (beta-cyfluthrin) is a formulation of a pyrethroid contact insecticide for controlling Asian citrus psyllid adults and nymphs. This material will be applied a minimum of one time to the foliage of host plants on designated residential properties.

Merit® 2F (imidacloprid, a systemic insecticide) applied to the soil of all host plants at designated residential properties. The material is taken up into the plant via the root system and provides approximately 12 months of protection against the pest, depending on the soil conditions.

CoreTect™ (imidacloprid, a systemic insecticide), tablets were applied below the soil surface of host plants at designated residential properties. The material is taken up into the plant via the root system and provides approximately 12 months of protection against the pest, depending on the soil conditions.

CDFA has selected the insecticide products above based on their effectiveness against ACP, worker and environmental safety, and California registration status.

- Once the area has dried, you may use your property as you normally would.
- To prevent the spread of this pest, please do not move plant material off your property without contacting our project office.
- For best results, please irrigate the plants that were treated within 24 hours of treatment.

If you are experiencing health problems after this application, call the California Poison Control System hotline at **(800) 222-1222** (voice), or consult with your physician.

Thank you for your cooperation.

Block Number _____ Date _____
(Please refer to this block number when contacting our office)
60-234 (2/14)

Post Detection/Emergency Projects
Telephone: 800-491-1899 • www.cdffa.ca.gov

State of California
Caren Rosness, Governor



**CITRUS PEST & DISEASE
PREVENTION DIVISION**
CALIFORNIA DEPARTMENT OF FOOD AND AGRICULTURE



Environmental Monitoring



CITRUS PEST & DISEASE
PREVENTION DIVISION
CALIFORNIA DEPARTMENT OF FOOD AND AGRICULTURE

To ensure protection of human health and the environment, CDFA has contracted with DPR to oversee environmental monitoring of treatment projects.

- Monitoring is complete in this area and sampling media include air, leaf, soil, tank, and water



**CDFA REPORT A PEST HOTLINE:
1.800.491.1899
www.cdfa.ca.gov/go/reportapest**



Protecting Pollinators

Protecting native bees and managed hives is an important consideration in agricultural officials' efforts to protect our food supply and environment from invasive pests like the ACP.

- The Program follows all pesticide labels and bee safe label language.
- Program staff actively look for foraging bees.
- Treatment activities are not conducted if bees are actively foraging on host plants to be treated.
- When bees are present, the treatment will be rescheduled for a time when bees are not active, like early morning.

**PEST HOTLINE:
1.800.491.1899**



**CITRUS PEST & DISEASE
PREVENTION DIVISION**
CALIFORNIA DEPARTMENT OF FOOD AND AGRICULTURE

CDFA will not treat if bees are present.



More info online at www.cdfa.ca.gov/plant/pollinators

Biocontrol

Biological Control Method

- Use of natural enemies to suppress and control populations of invasive pests.
- *Tamarixia radiata* is identified as the ideal biocontrol agent for the ACP.
- Biocontrol is part of the Integrated Pest Management plan for the ACP.



Biocontrol Rearing Process



Biocontrol Releases



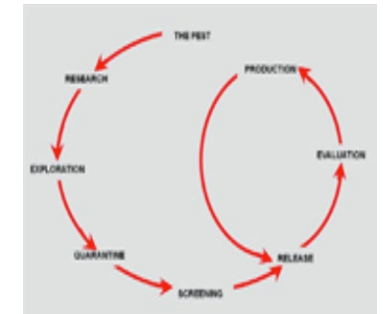
Tamarixia radiata



Biocontrol Rearing Facilities



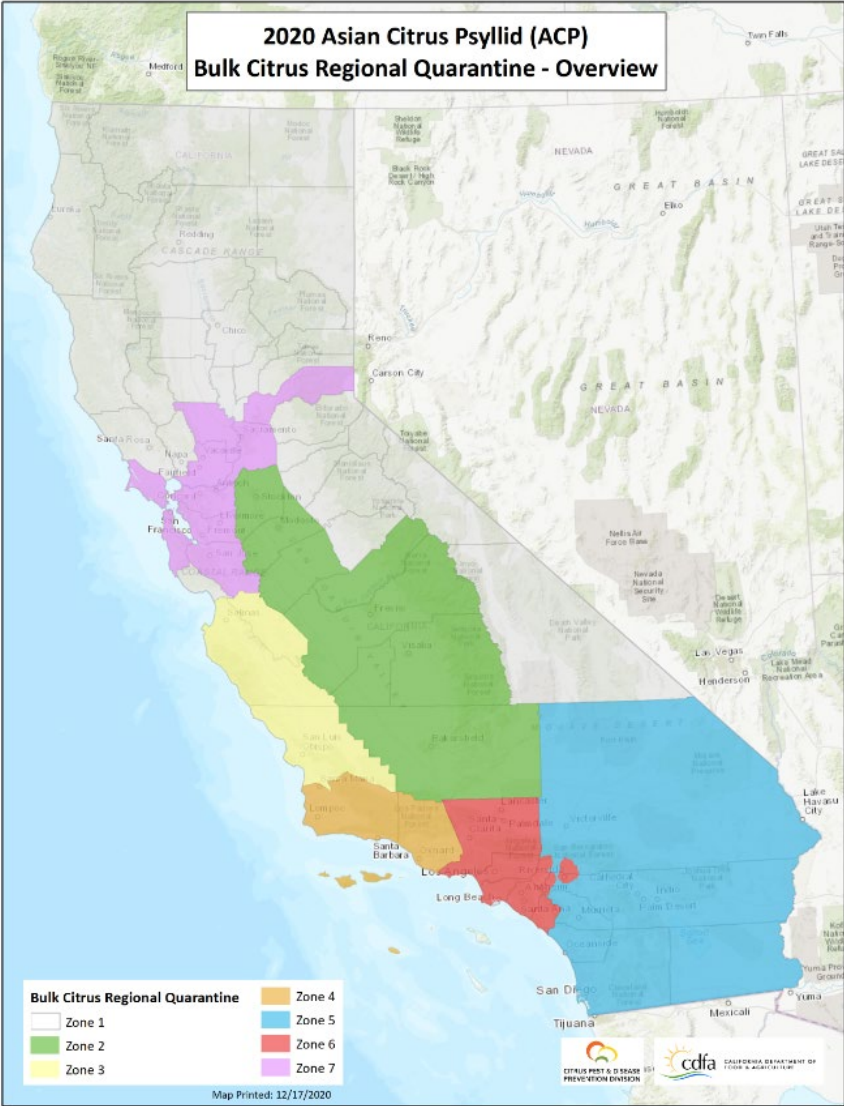
ACP





Quarantine

- Movement of regulated host material within and from a quarantine area is prohibited unless it meets regulatory requirements.
- Homegrown fruit for personal consumption (under 25 pounds) may move within the quarantine area provided all stems and leaves are removed.
- Sharing fruit is discouraged due to the possibility of ACP hitchhiking to other areas.



- Nurseries and farmers markets are regulated establishments.
- Only buy citrus nursery stock from reputable sources within the ACP quarantine zone in which you reside. Citrus nursery stock in this quarantine should have a blue CDFA nursery tag attached to them.

**PEST HOTLINE:
1.800.491.1899**

More Quarantine Information?
Visit our website for the latest regulation information:
www.cdfa.ca.gov/plant/acp/regulation
www.cdfa.ca.gov/plant/hlb/regulation

PEST HOTLINE:
1.800.491.1899

Questions?



CITRUS PEST & DISEASE
PREVENTION DIVISION
CALIFORNIA DEPARTMENT OF FOOD AND AGRICULTURE

SAVE 
CITRUS

californiacitrusthreat.org

To ask a question:

1. Raise your hand – you will be unmuted and can ask verbally.
2. Type your question into the question box.

