



CITRUS PEST & DISEASE  
PREVENTION DIVISION  
CALIFORNIA DEPARTMENT OF FOOD AND AGRICULTURE

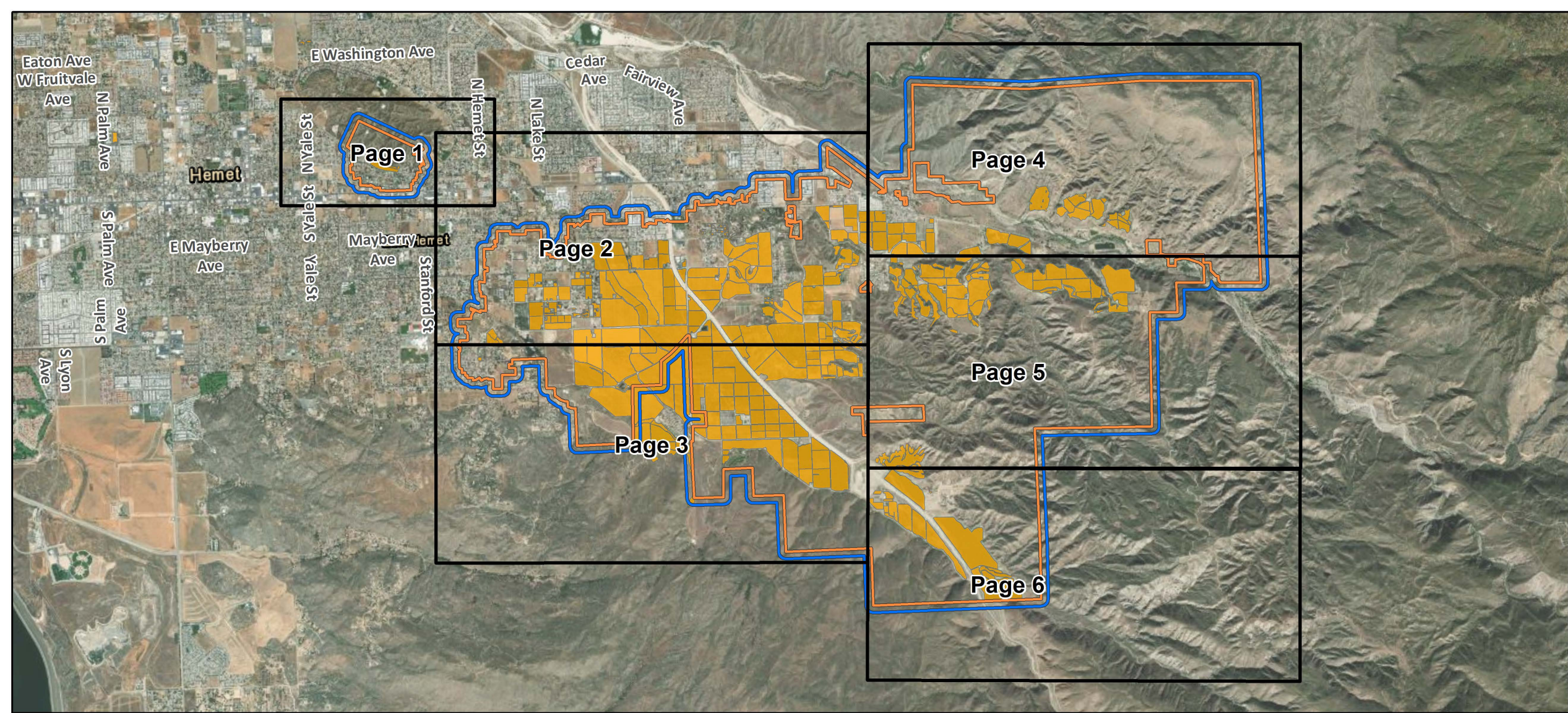
# Hemet Treatment Maps

---


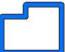

Asian Citrus Psyllid Control Program



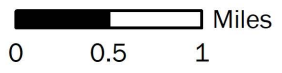
CDFA REPORT A PEST HOTLINE: 1.800.491.1899  
[www.cdfa.ca.gov/go/reportapest](http://www.cdfa.ca.gov/go/reportapest)

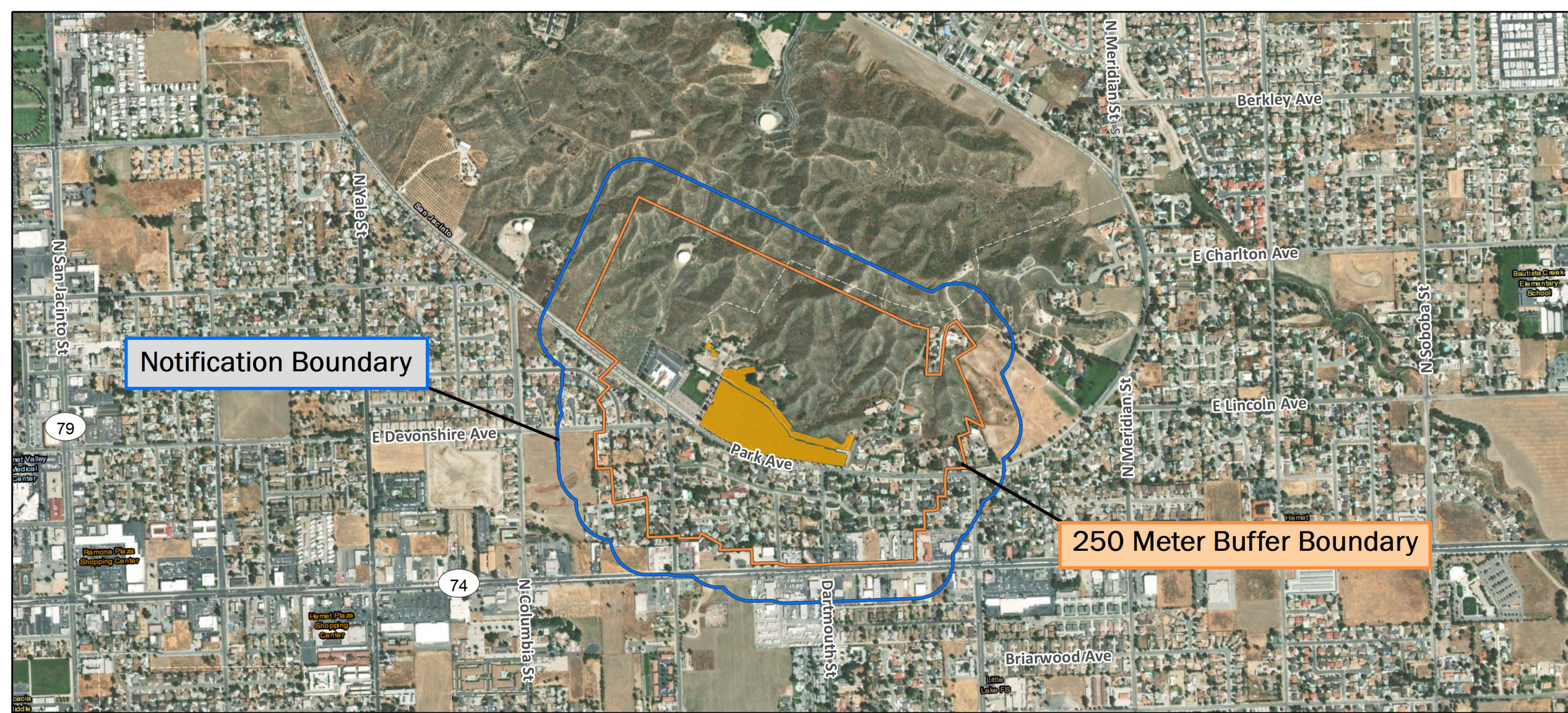


**Overview**  
 Asian Citrus Psyllid Treatment  
 Public Meeting Map - 08/03/2021  
 Hemet, Riverside County  
 Printed 8/2/2021

-  250 Meter Buffer Boundary
-  Notification Boundary
-  Commercial Citrus

The 250 meter buffer boundary delineates the maximum geographical extent of the California Department of Food and Agriculture's treatment activities. Treatments will only be conducted on residential, industrial and rights of way properties with citrus and closely related host plants, not on production citrus orchards or nurseries.

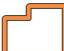






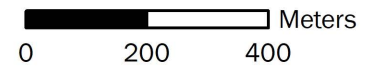
**Notification Boundary**

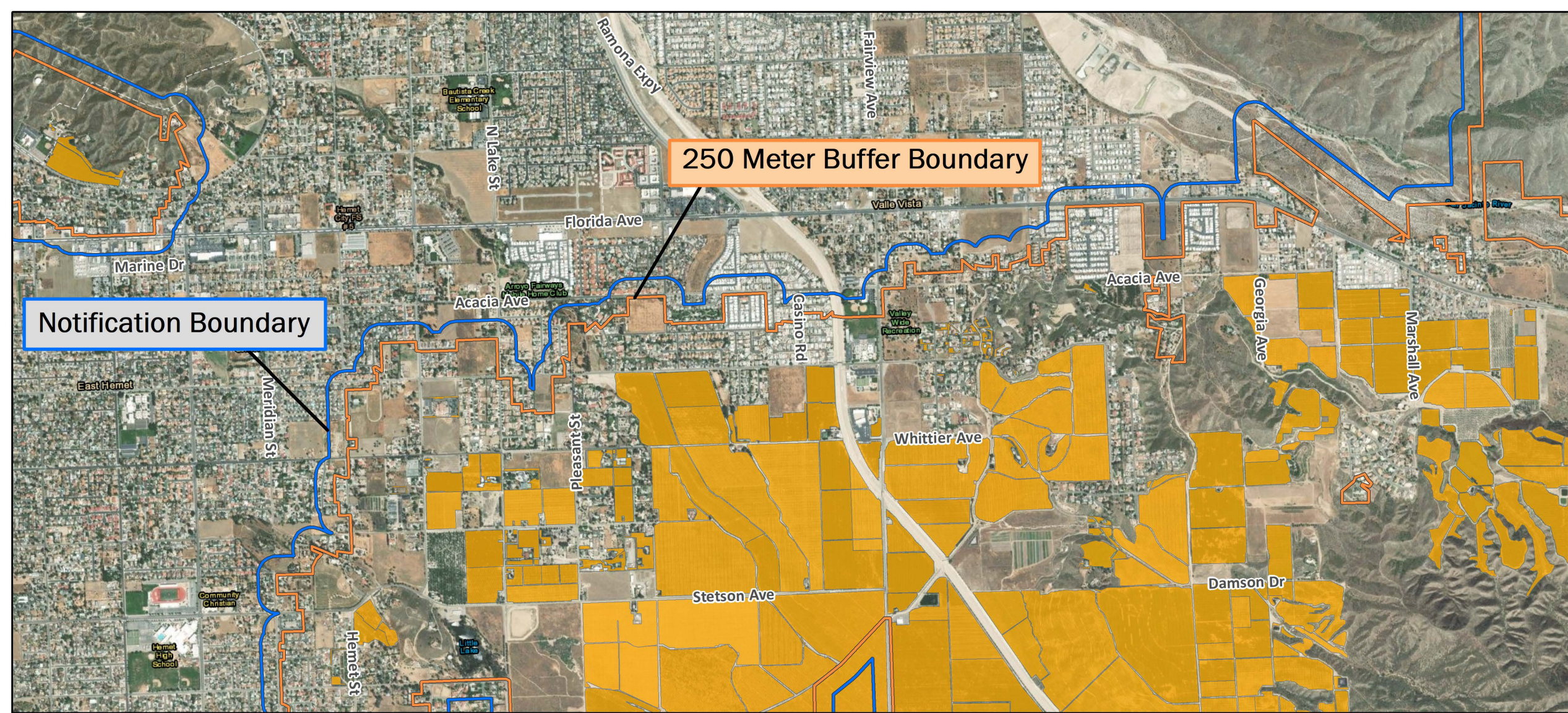
**250 Meter Buffer Boundary**

**Asian Citrus Psyllid Treatment  
Public Meeting Map (Page 1) - 08/03/2021**  
East Hemet, Hemet, San Jacinto  
Riverside County  
Printed 8/2/2021

-  250 Meter Buffer Boundary
-  Notification Boundary
-  Commercial Citrus

The 250 meter buffer boundary delineates the maximum geographical extent of the California Department of Food and Agriculture's treatment activities. Treatments will only be conducted on residential, industrial and rights of way properties with citrus and closely related host plants, not on production citrus orchards or nurseries.








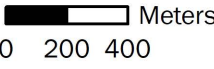
Notification Boundary

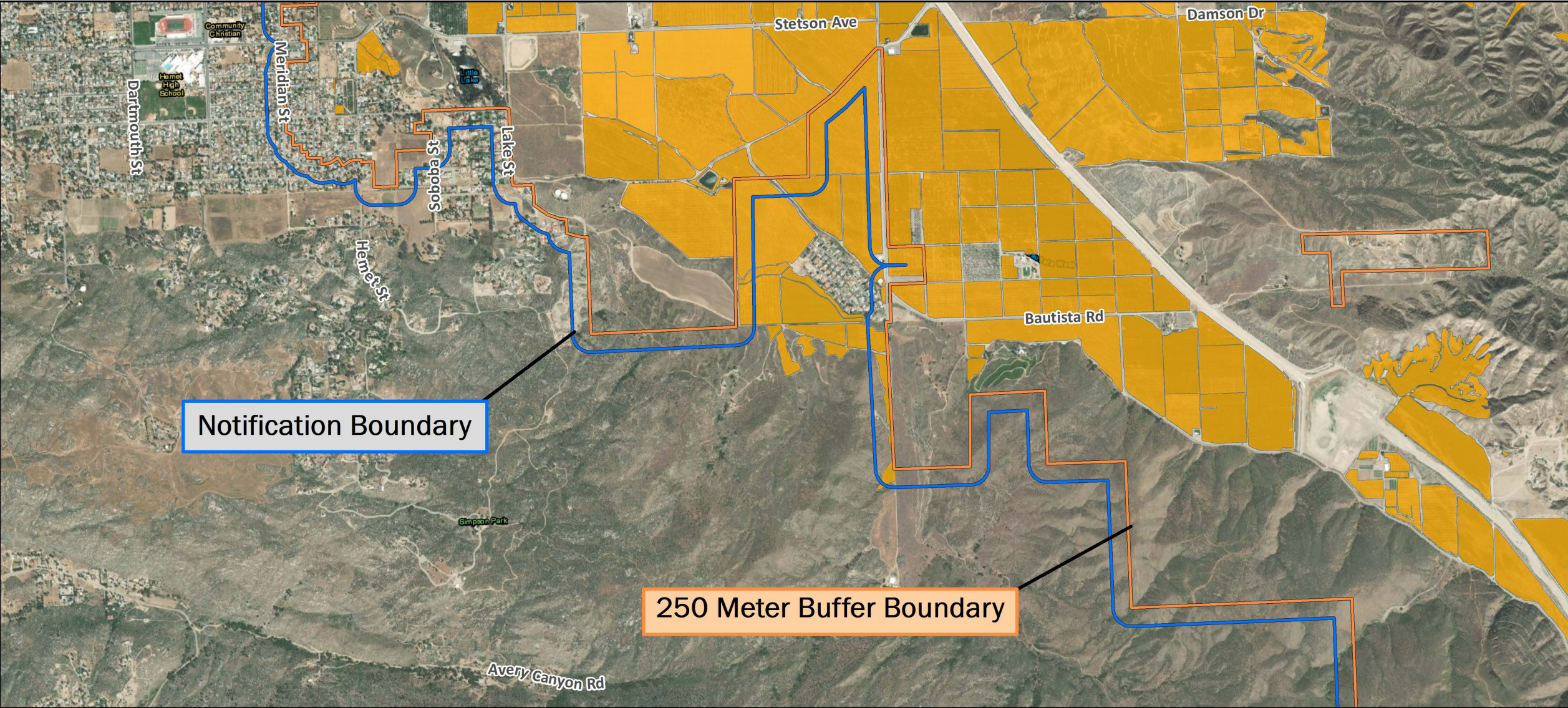
250 Meter Buffer Boundary

Asian Citrus Psyllid Treatment  
 Public Meeting Map (Page 2) - 08/03/2021  
 East Hemet, Hemet, San Jacinto, Valle Vista  
 Riverside County  
 Printed 8/2/2021

-  250 Meter Buffer Boundary
-  Notification Boundary
-  Commercial Citrus

The 250 meter buffer boundary delineates the maximum geographical extent of the California Department of Food and Agriculture's treatment activities. Treatments will only be conducted on residential, industrial and rights of way properties with citrus and closely related host plants, not on production citrus orchards or nurseries.








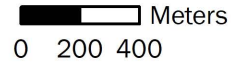
Notification Boundary

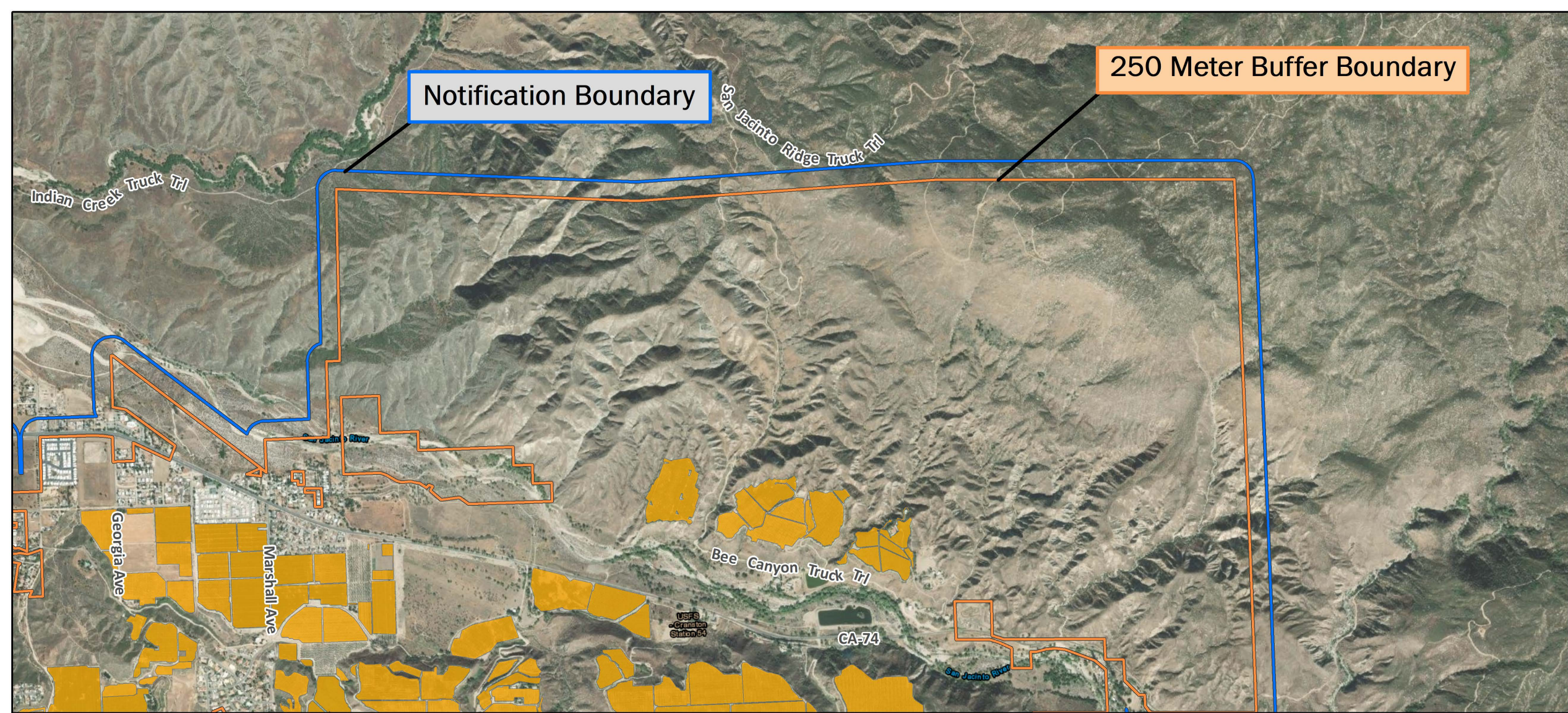
250 Meter Buffer Boundary

Asian Citrus Psyllid Treatment  
 Public Meeting Map (Page 3) - 08/03/2021  
 Valle Vista, East Hemet  
 Riverside County  
 Printed 8/2/2021




-  250 Meter Buffer Boundary
-  Notification Boundary
-  Commercial Citrus

The 250 meter buffer boundary delineates the maximum geographical extent of the California Department of Food and Agriculture's treatment activities. Treatments will only be conducted on residential, industrial and rights of way properties with citrus and closely related host plants, not on production citrus orchards or nurseries.

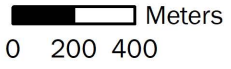


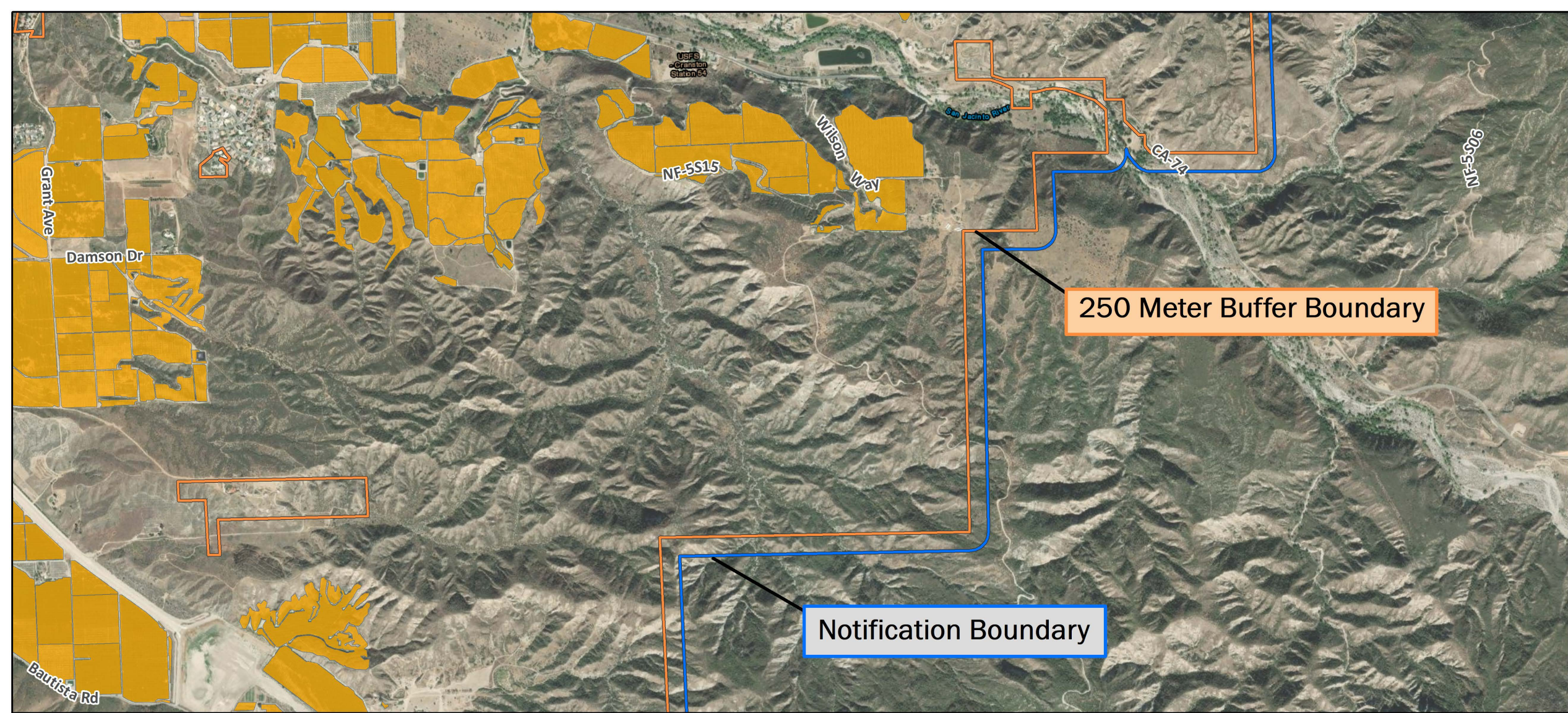


Asian Citrus Psyllid Treatment  
 Public Meeting Map (Page 4) - 08/03/2021  
 Valle Vista  
 Riverside County  
 Printed 8/2/2021




-  250 Meter Buffer Boundary
-  Notification Boundary
-  Commercial Citrus

The 250 meter buffer boundary delineates the maximum geographical extent of the California Department of Food and Agriculture's treatment activities. Treatments will only be conducted on residential, industrial and rights of way properties with citrus and closely related host plants, not on production citrus orchards or nurseries.






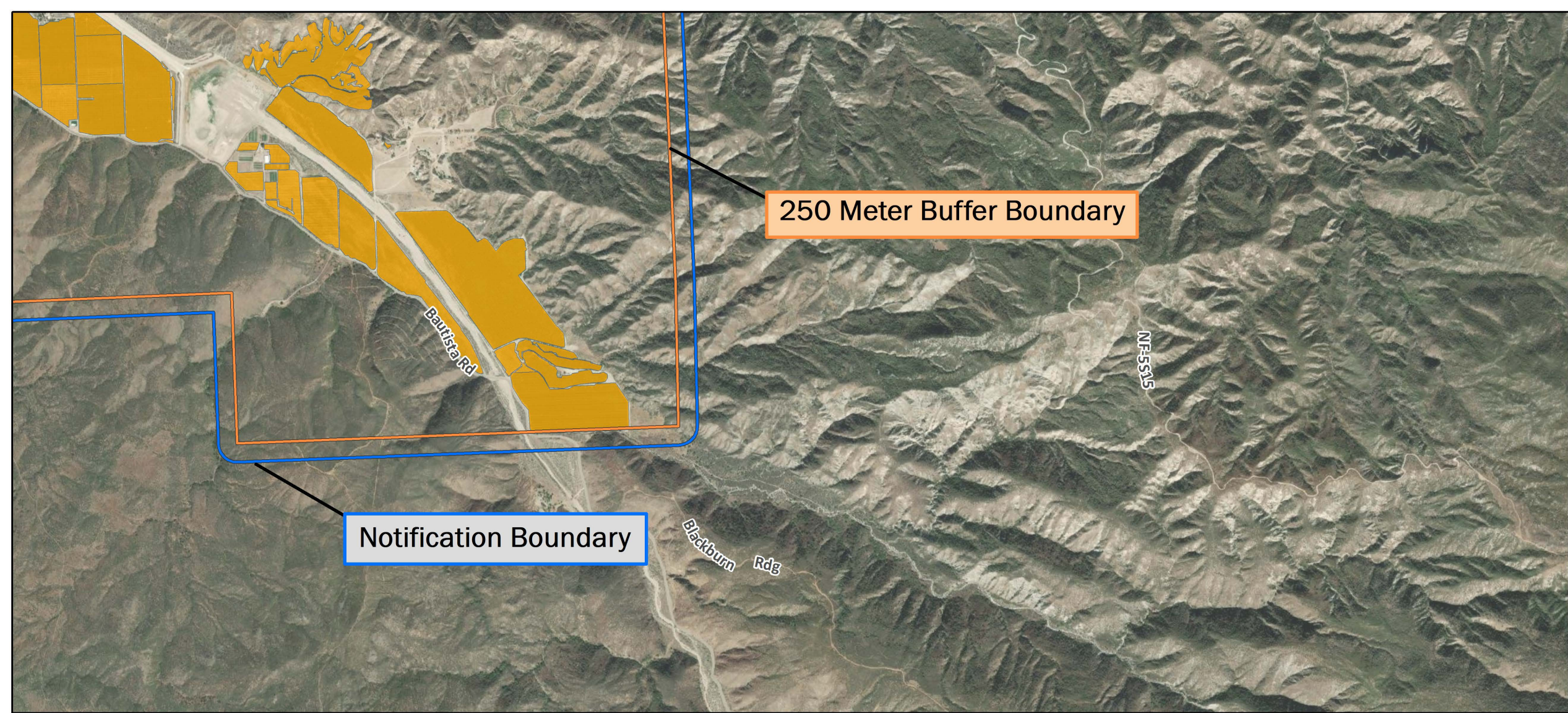
Asian Citrus Psyllid Treatment  
 Public Meeting Map (Page 5) - 08/03/2021  
 Valle Vista  
 Riverside County  
 Printed 8/2/2021

-  250 Meter Buffer Boundary
-  Notification Boundary
-  Commercial Citrus




The 250 meter buffer boundary delineates the maximum geographical extent of the California Department of Food and Agriculture's treatment activities. Treatments will only be conducted on residential, industrial and rights of way properties with citrus and closely related host plants, not on production citrus orchards or nurseries.

 Meters  
 0 200 400

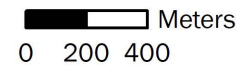




Asian Citrus Psyllid Treatment  
 Public Meeting Map (Page 6) - 08/03/2021  
 Valle Vista  
 Riverside County  
 Printed 8/2/2021

-  250 Meter Buffer Boundary
-  Notification Boundary
-  Commercial Citrus

The 250 meter buffer boundary delineates the maximum geographical extent of the California Department of Food and Agriculture's treatment activities. Treatments will only be conducted on residential, industrial and rights of way properties with citrus and closely related host plants, not on production citrus orchards or nurseries.







CITRUS PEST & DISEASE  
PREVENTION DIVISION  
CALIFORNIA DEPARTMENT OF FOOD AND AGRICULTURE

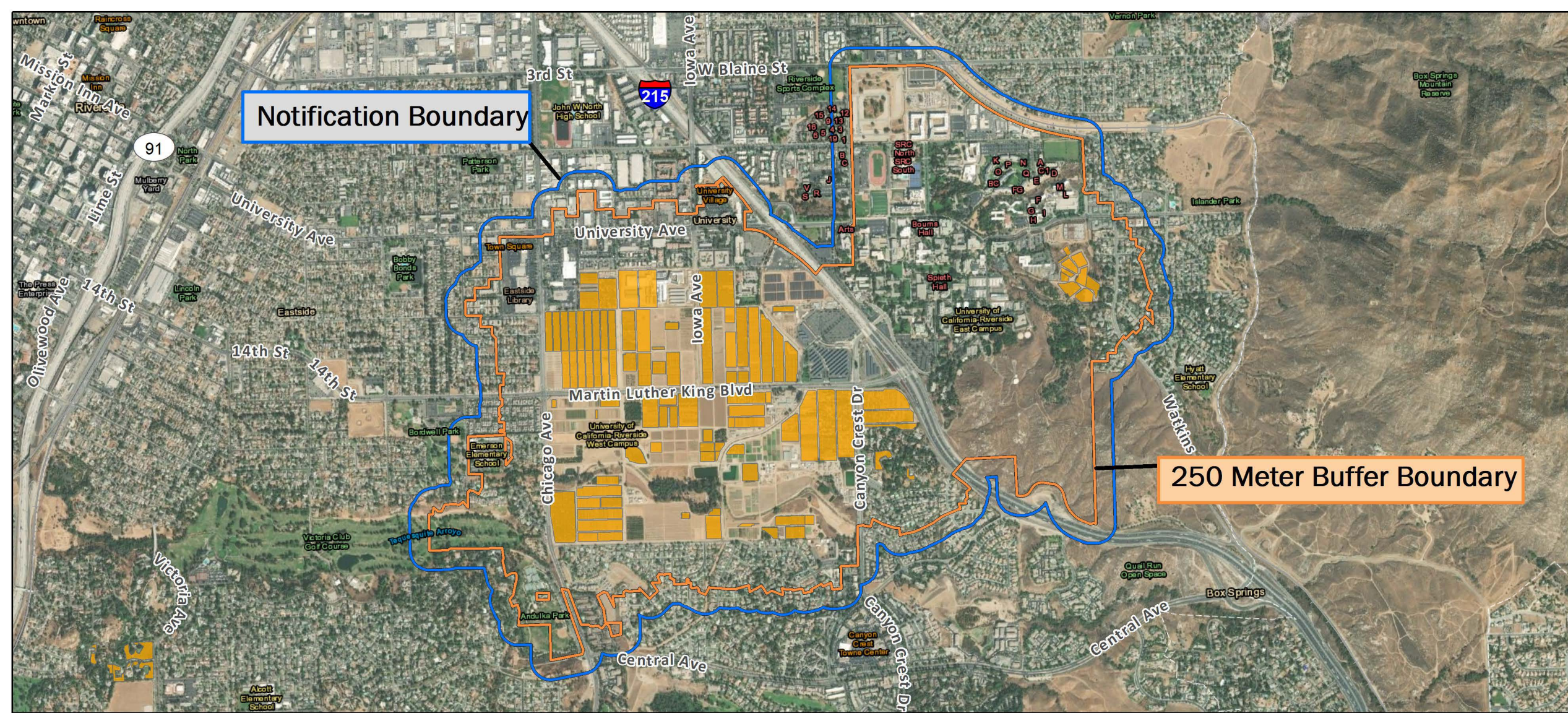
# University of California, Riverside Treatment Maps

---

Asian Citrus Psyllid Control Program






CDFA REPORT A PEST HOTLINE: 1.800.491.1899  
[www.cdfa.ca.gov/go/reportapest](http://www.cdfa.ca.gov/go/reportapest)



Asian Citrus Psyllid Treatment  
Public Meeting Map - 08/03/2021

UC Riverside  
Riverside County  
Printed 7/30/2021

-  250 Meter Buffer Boundary
-  Notification Boundary
-  Commercial Citrus

The 250 meter buffer boundary delineates the maximum geographical extent of the California Department of Food and Agriculture's treatment activities. Treatments will only be conducted on residential, industrial and rights of way properties with citrus and closely related host plants, not on production citrus orchards or nurseries.

