




Overview Map
 Asian Citrus Psyllid Treatment
 Public Meeting Map - 07/28/2021
 Santa Barbara County
 Printed 7/28/2021

-  250 Meter Buffer Boundary
-  Notification Boundary
-  Citrus Layer

The 250 meter buffer boundary delineates the maximum geographical extent of the California Department of Food and Agriculture's treatment activities. Treatments will only be conducted on residential, industrial and rights of way properties with citrus and closely related host plants, not on production citrus orchards or nurseries.

 Miles
 0 1




 CITRUS PEST & DISEASE PREVENTION DIVISION
 **cdfa**
 CALIFORNIA DEPARTMENT OF FOOD & AGRICULTURE



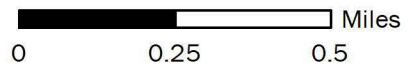
Notification Boundary

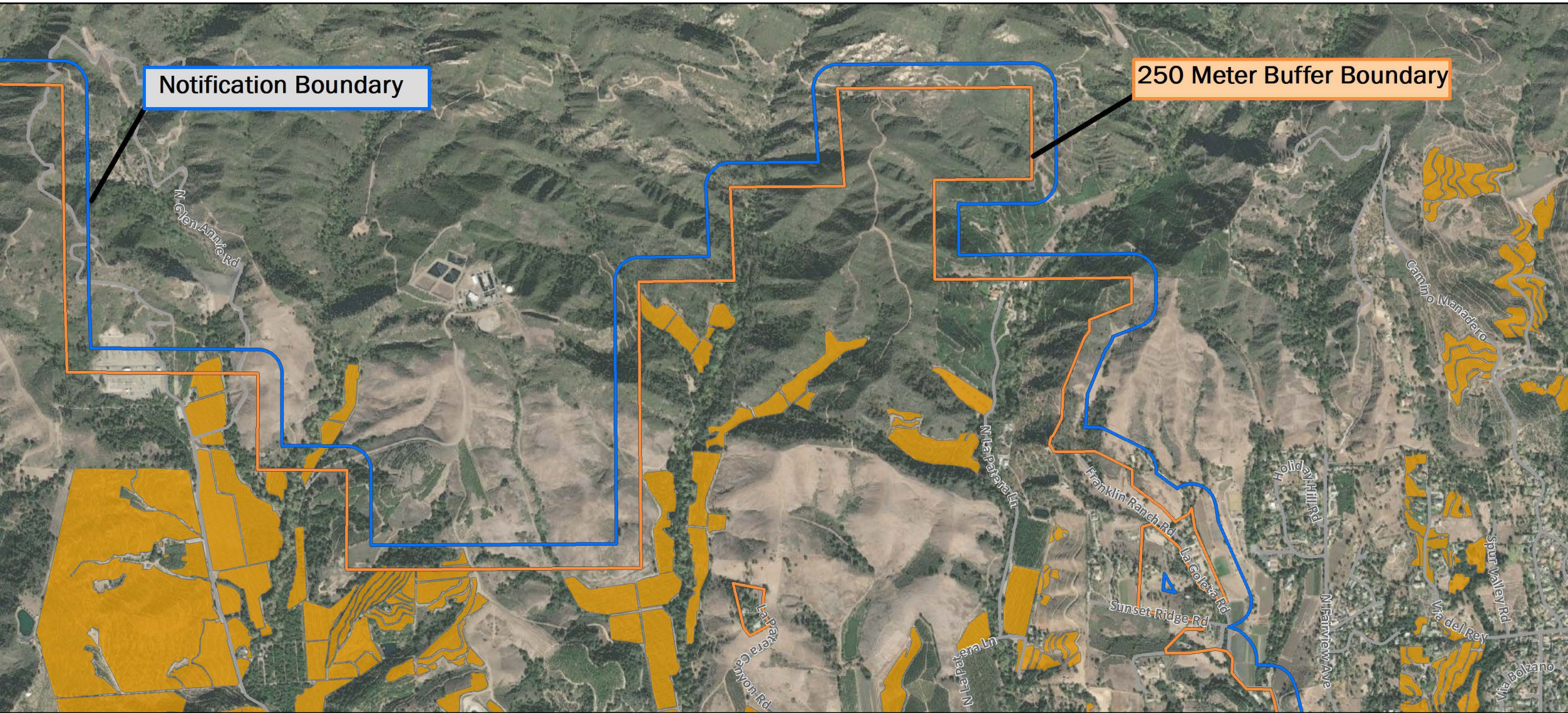
250 Meter Buffer Boundary

Detail Page 1
 Asian Citrus Psyllid Treatment
 Public Meeting Map - 07/28/2021
 Goleta
 Santa Barbara County
 Printed 7/28/2021

-  250 Meter Buffer Boundary
-  Notification Area
-  Citrus Layer

The 250 meter buffer boundary delineates the maximum geographical extent of the California Department of Food and Agriculture's treatment activities. Treatments will only be conducted on residential, industrial and rights of way properties with citrus and closely related host plants, not on production citrus orchards or nurseries.








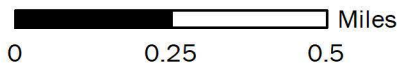
Notification Boundary

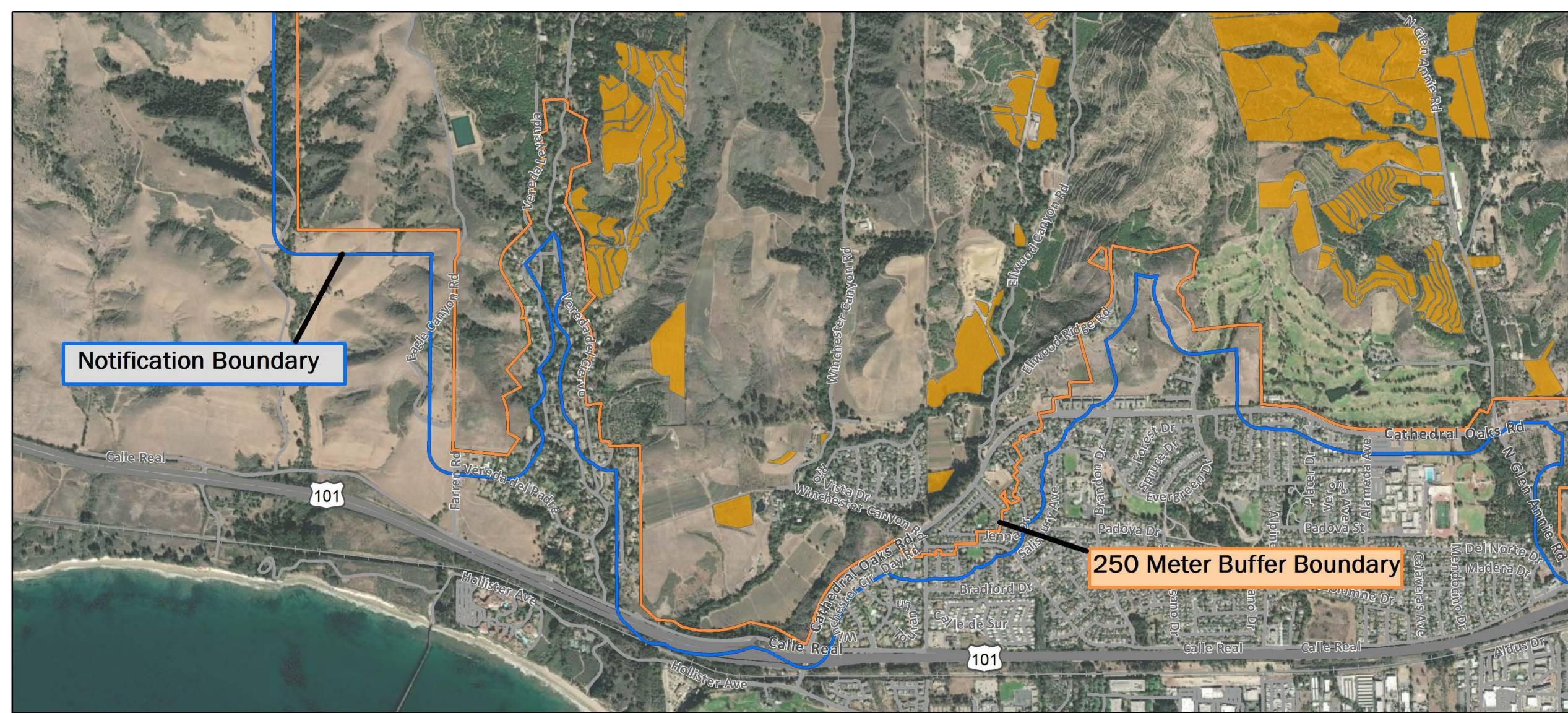
250 Meter Buffer Boundary

Detail Page 2
 Asian Citrus Psyllid Treatment
 Public Meeting Map - 07/28/2021
 Goleta
 Santa Barbara County
 Printed 7/28/2021

-  250 Meter Buffer Boundary
-  Notification Area
-  Citrus Layer

The 250 meter buffer boundary delineates the maximum geographical extent of the California Department of Food and Agriculture's treatment activities. Treatments will only be conducted on residential, industrial and rights of way properties with citrus and closely related host plants, not on production citrus orchards or nurseries.





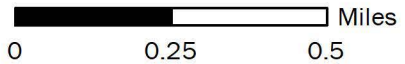
Notification Boundary

250 Meter Buffer Boundary

Detail Page 3
 Asian Citrus Psyllid Treatment
 Public Meeting Map - 07/28/2021
 Goleta
 Santa Barbara County
 Printed 7/28/2021

- 250 Meter Buffer Boundary
- Notification Area
- Citrus Layer

The 250 meter buffer boundary delineates the maximum geographical extent of the California Department of Food and Agriculture's treatment activities. Treatments will only be conducted on residential, industrial and rights of way properties with citrus and closely related host plants, not on production citrus orchards or nurseries.





Notification Boundary

250 Meter Buffer Boundary

Detail Page 4
 Asian Citrus Psyllid Treatment
 Public Meeting Map - 07/28/2021
 Goleta
 Santa Barbara County
 Printed 7/28/2021

- 250 Meter Buffer Boundary
- Notification Area
- Citrus Layer

The 250 meter buffer boundary delineates the maximum geographical extent of the California Department of Food and Agriculture's treatment activities. Treatments will only be conducted on residential, industrial and rights of way properties with citrus and closely related host plants, not on production citrus orchards or nurseries.

