



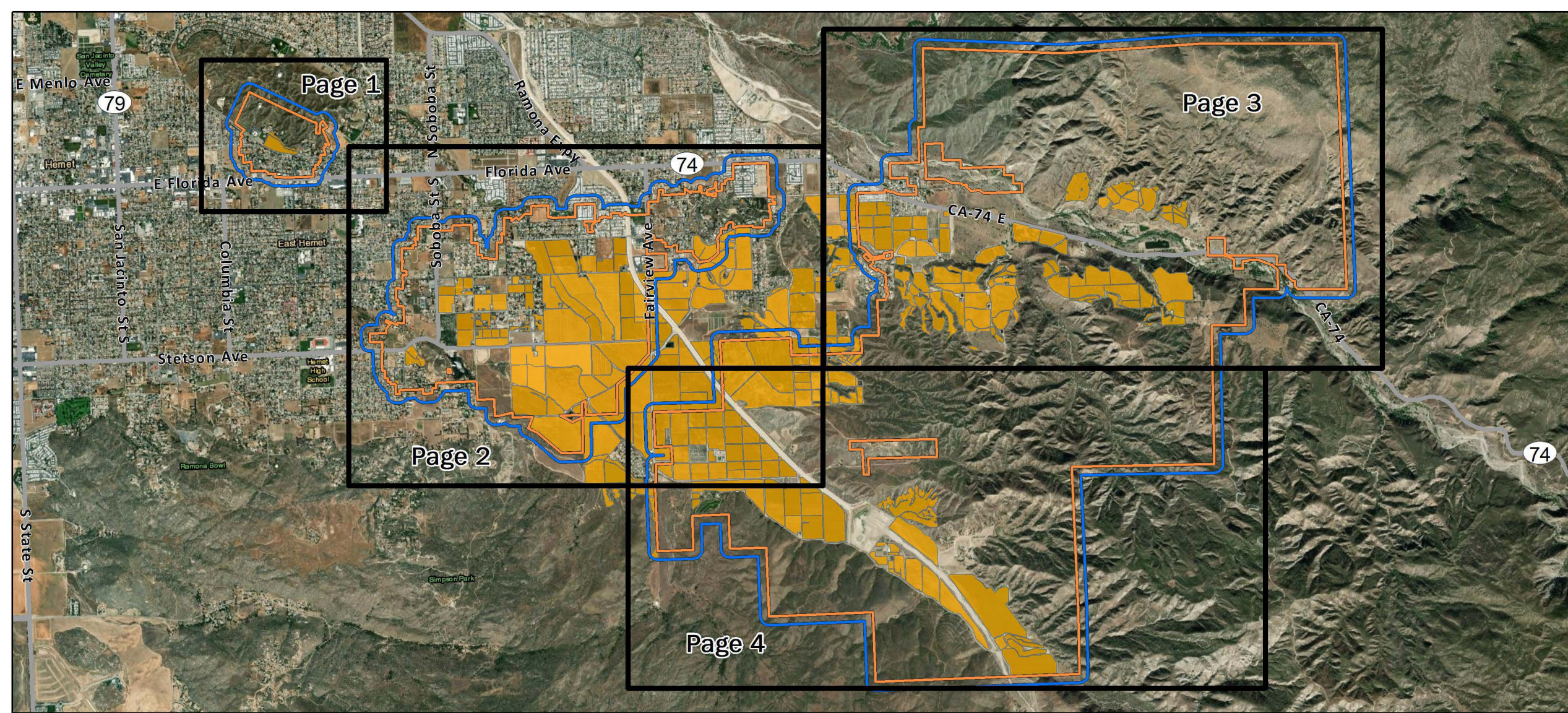
**CITRUS PEST & DISEASE
PREVENTION DIVISION**
CALIFORNIA DEPARTMENT OF FOOD AND AGRICULTURE

Hemet Area Maps

Asian Citrus Psyllid Control Program






CDFA REPORT A PEST HOTLINE: 1.800.491.1899
www.cdfa.ca.gov/go/reportapest

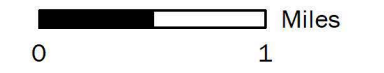


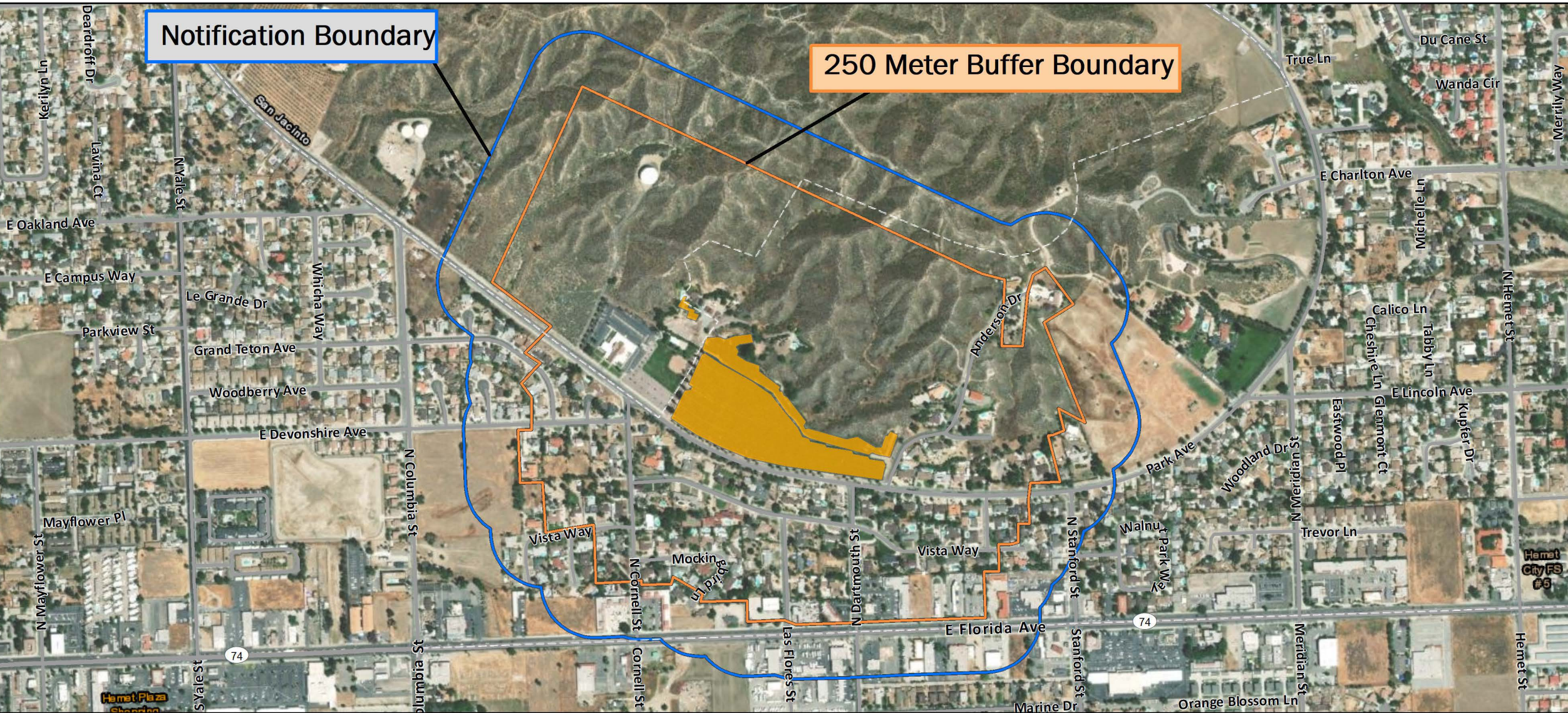
Asian Citrus Psyllid Treatment
 Public Meeting Overview Map - 01/31/2022
 East Hemet, Hemet, San Jacinto, Valle Vista
 Riverside County

Printed 1/26/2022

-  250 Meter Buffer Boundary
-  Notification Boundary
-  Commercial Citrus

The 250 meter buffer boundary delineates the maximum geographical extent of the California Department of Food and Agriculture's treatment activities. Treatments will only be conducted on residential, industrial and rights of way properties with citrus and closely related host plants, not on production citrus orchards or nurseries.








Notification Boundary

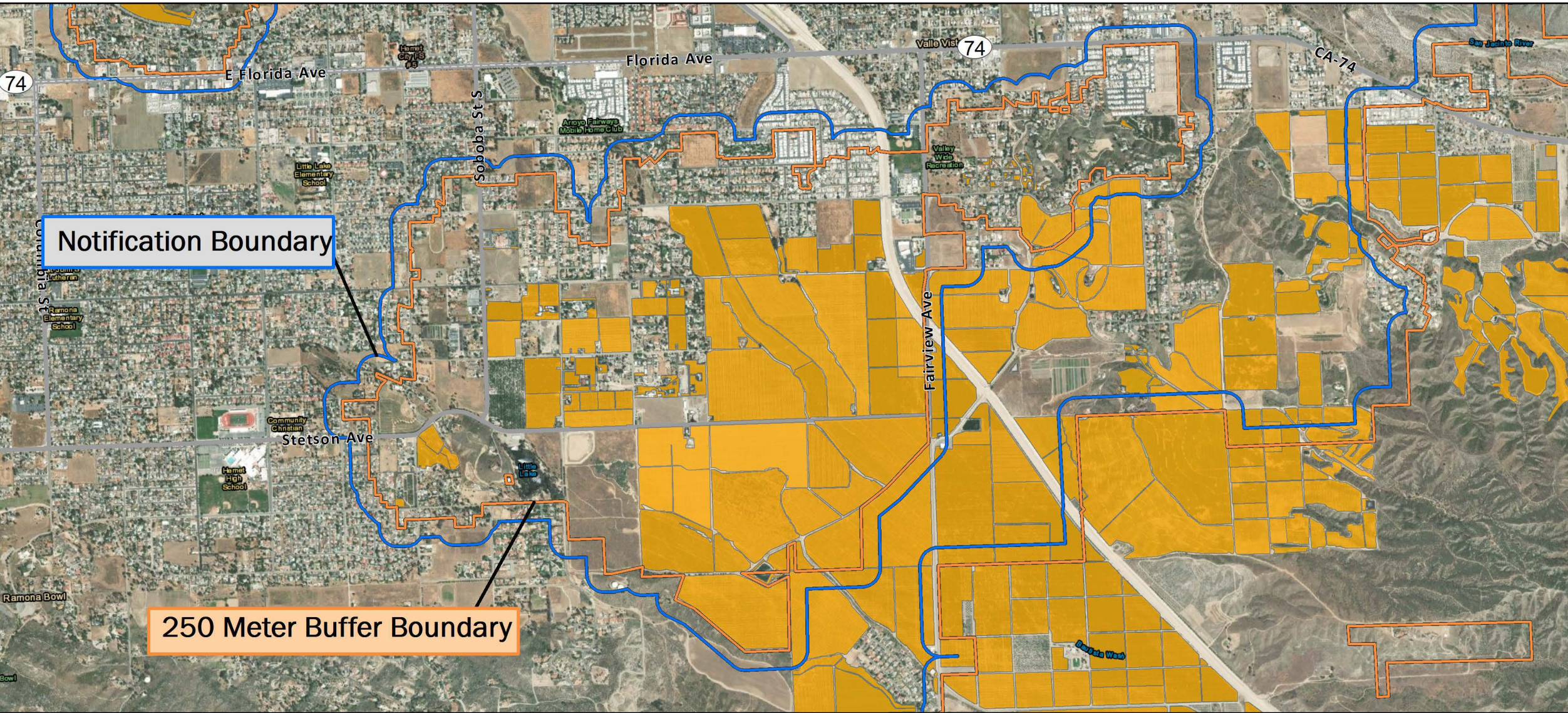
250 Meter Buffer Boundary

Asian Citrus Psyllid Treatment
 Public Meeting Map (Page 1) - 01/31/2022
 East Hemet, Hemet, San Jacinto
 Riverside County
 Printed 1/27/2022




-  250 Meter Buffer Boundary
-  Notification Boundary
-  Commercial Citrus

The 250 meter buffer boundary delineates the maximum geographical extent of the California Department of Food and Agriculture's treatment activities. Treatments will only be conducted on residential, industrial and rights of way properties with citrus and closely related host plants, not on production citrus orchards or nurseries.





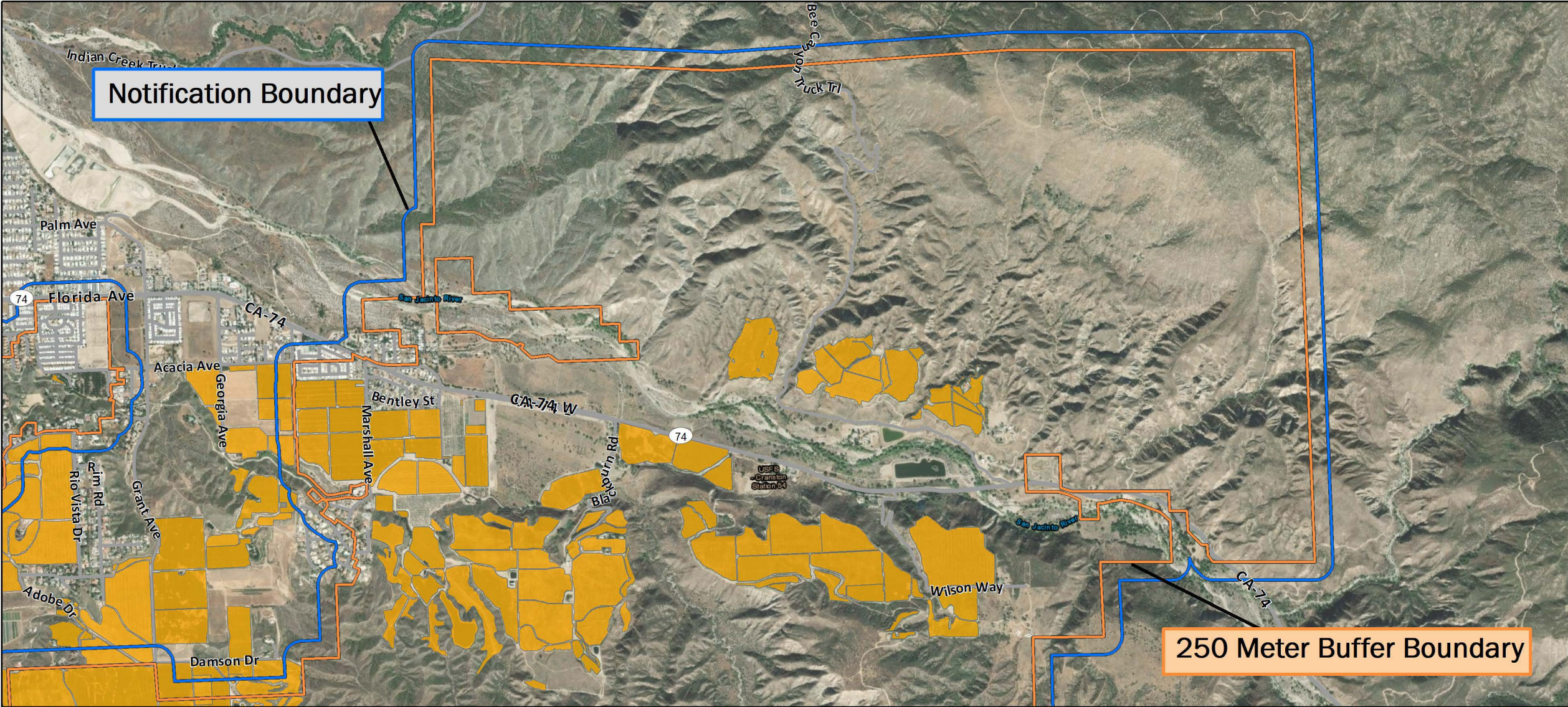
Asian Citrus Psyllid Treatment
 Public Meeting Map (Page 2) - 01/31/2022
 East Hemet, Hemet, Valle Vista
 Riverside County
 Printed 1/26/2022

-  250 Meter Buffer Boundary
-  Notification Boundary
-  Commercial Citrus


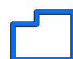

The 250 meter buffer boundary delineates the maximum geographical extent of the California Department of Food and Agriculture's treatment activities. Treatments will only be conducted on residential, industrial and rights of way properties with citrus and closely related host plants, not on production citrus orchards or nurseries.

0  1,000 Meters



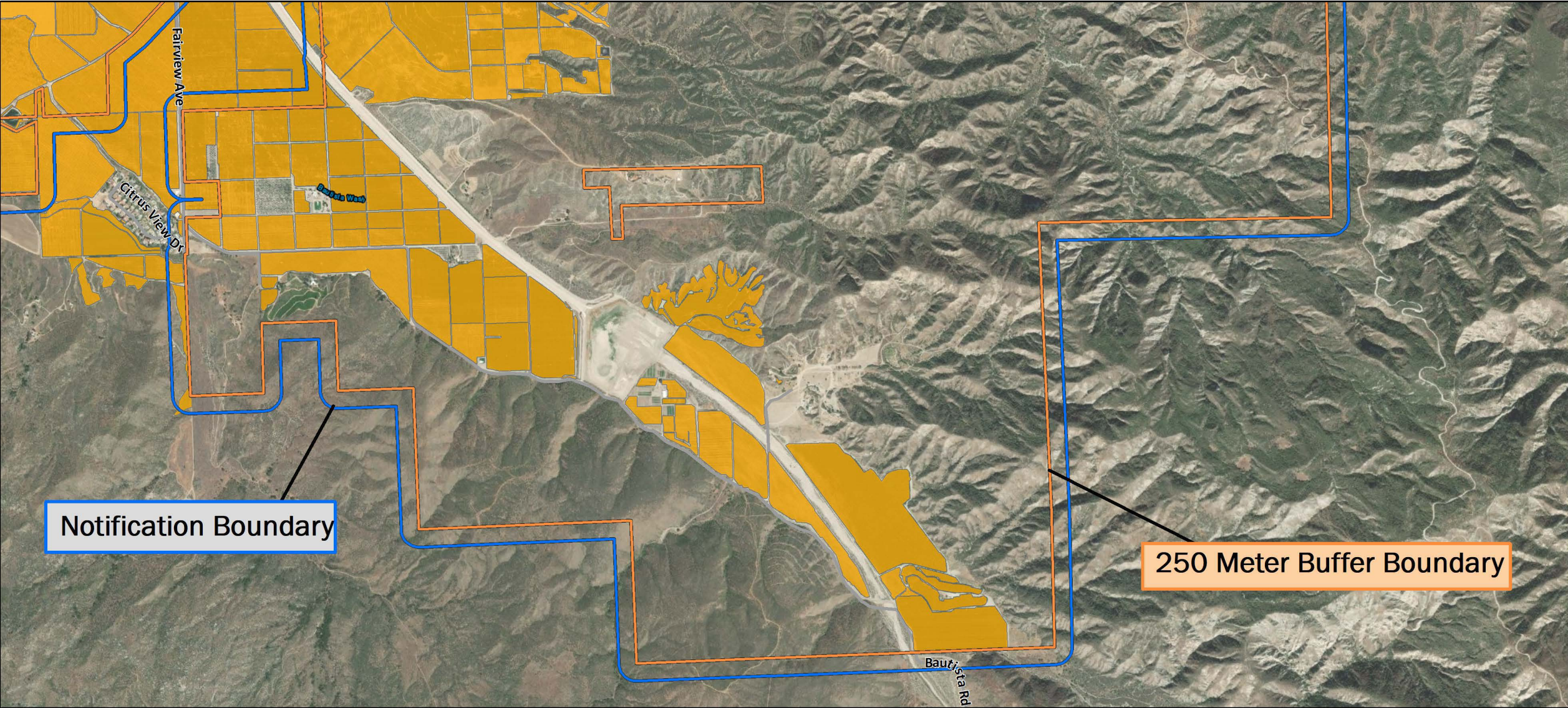



Asian Citrus Psyllid Treatment
 Public Meeting Map (Page 3) - 01/31/2022
 Valle Vista
 Riverside County
 Printed 1/26/2022

-  250 Meter Buffer Boundary
-  Notification Boundary
-  Commercial Citrus

The 250 meter buffer boundary delineates the maximum geographical extent of the California Department of Food and Agriculture's treatment activities. Treatments will only be conducted on residential, industrial and rights of way properties with citrus and closely related host plants, not on production citrus orchards or nurseries.








Notification Boundary

250 Meter Buffer Boundary

Asian Citrus Psyllid Treatment
 Public Meeting Map (Page 4) - 01/31/2022
 Valle Vista
 Riverside County
 Printed 1/26/2022

-  250 Meter Buffer Boundary
-  Notification Boundary
-  Commercial Citrus

The 250 meter buffer boundary delineates the maximum geographical extent of the California Department of Food and Agriculture's treatment activities. Treatments will only be conducted on residential, industrial and rights of way properties with citrus and closely related host plants, not on production citrus orchards or nurseries.





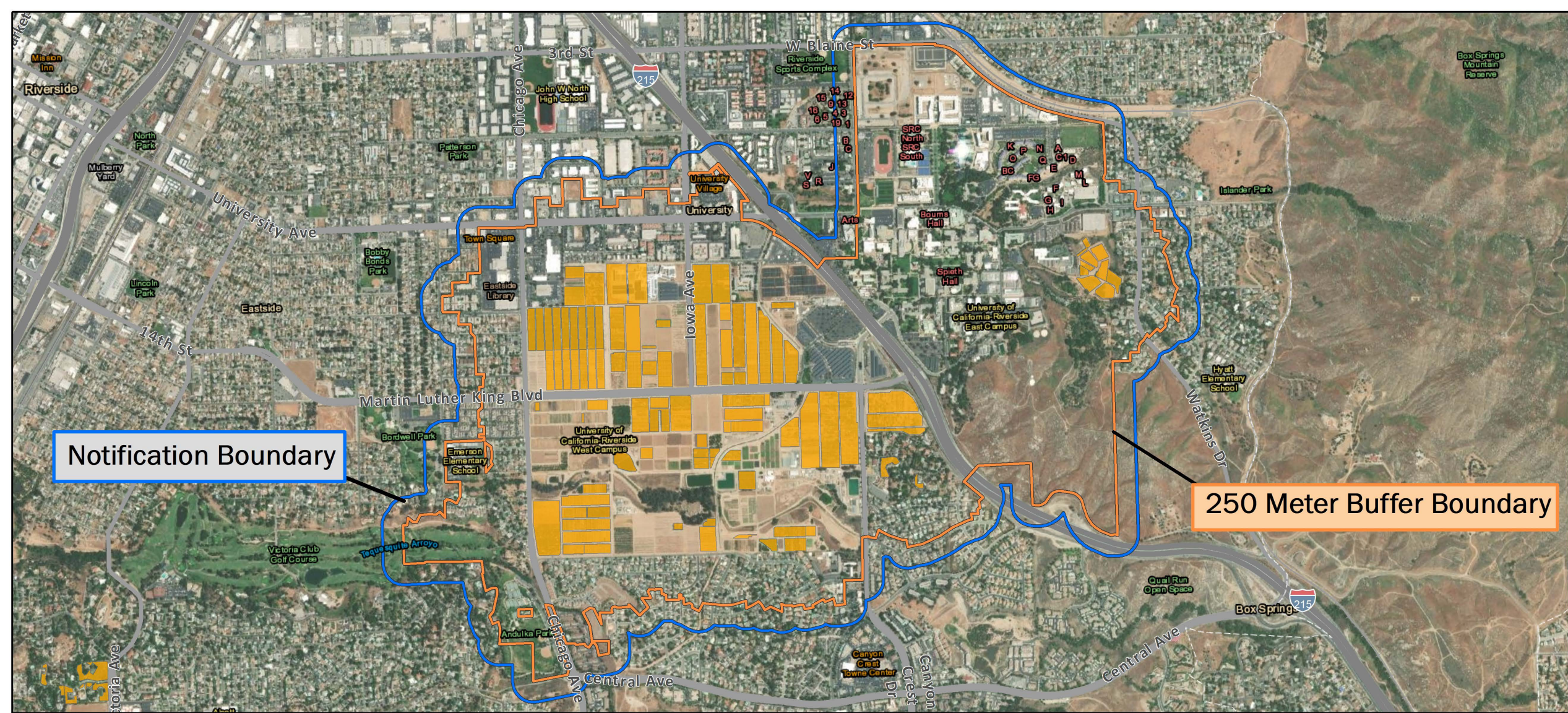
CITRUS PEST & DISEASE
PREVENTION DIVISION
CALIFORNIA DEPARTMENT OF FOOD AND AGRICULTURE

UC Riverside Area Maps

Asian Citrus Psyllid Control Program






CDFA REPORT A PEST HOTLINE: 1.800.491.1899
www.cdfa.ca.gov/go/reportapest



Notification Boundary

250 Meter Buffer Boundary

Asian Citrus Psyllid Treatment
 Public Meeting Map - 01/31/2022
 Riverside
 Riverside County
 Printed 1/26/2022

-  250 Meter Buffer Boundary
-  Notification Boundary
-  Commercial Citrus

The 250 meter buffer boundary delineates the maximum geographical extent of the California Department of Food and Agriculture's treatment activities. Treatments will only be conducted on residential, industrial and rights of way properties with citrus and closely related host plants, not on production citrus orchards or nurseries.





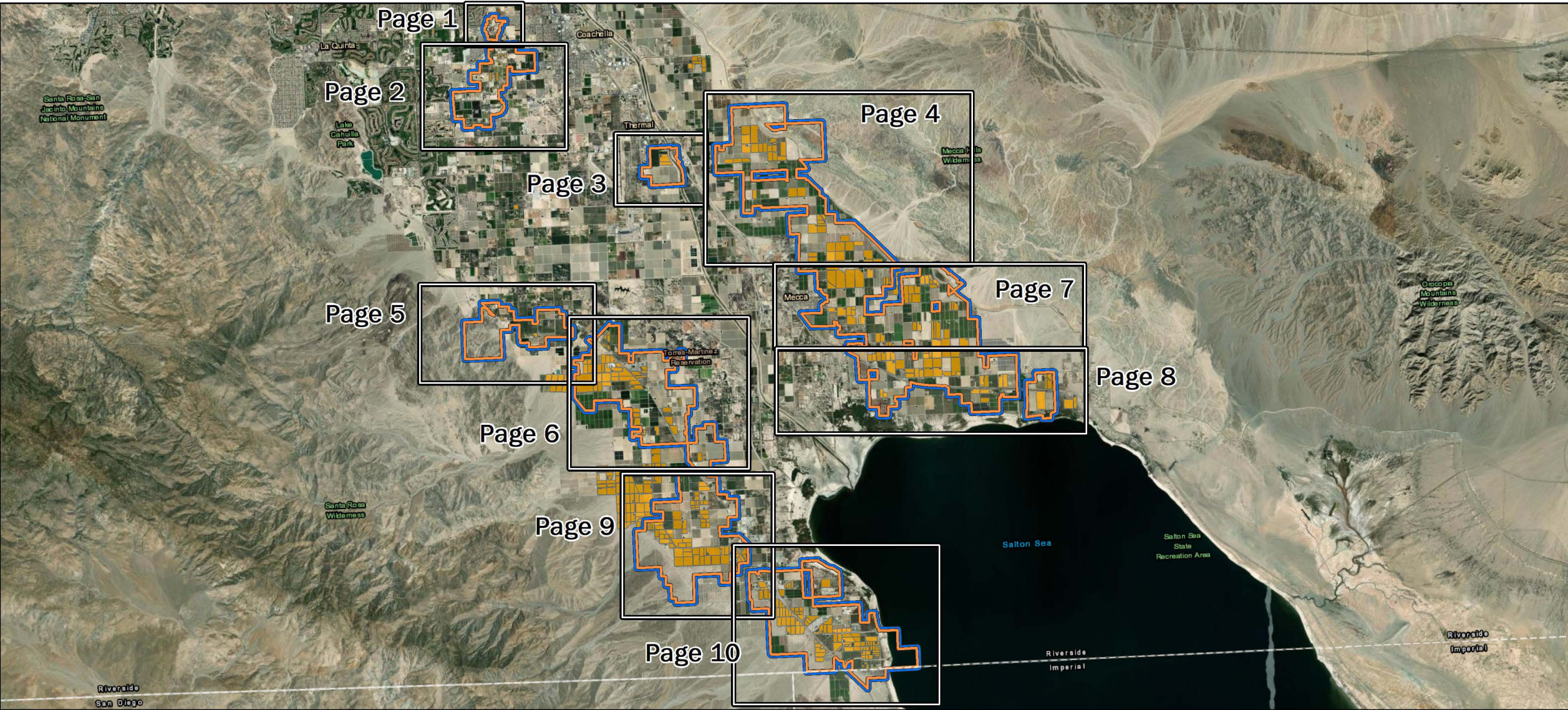
CITRUS PEST & DISEASE
PREVENTION DIVISION
CALIFORNIA DEPARTMENT OF FOOD AND AGRICULTURE

Coachella Valley Area Maps

Asian Citrus Psyllid Control Program






CDFA REPORT A PEST HOTLINE: 1.800.491.1899
www.cdfa.ca.gov/go/reportapest

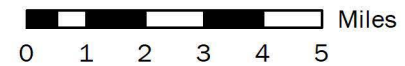


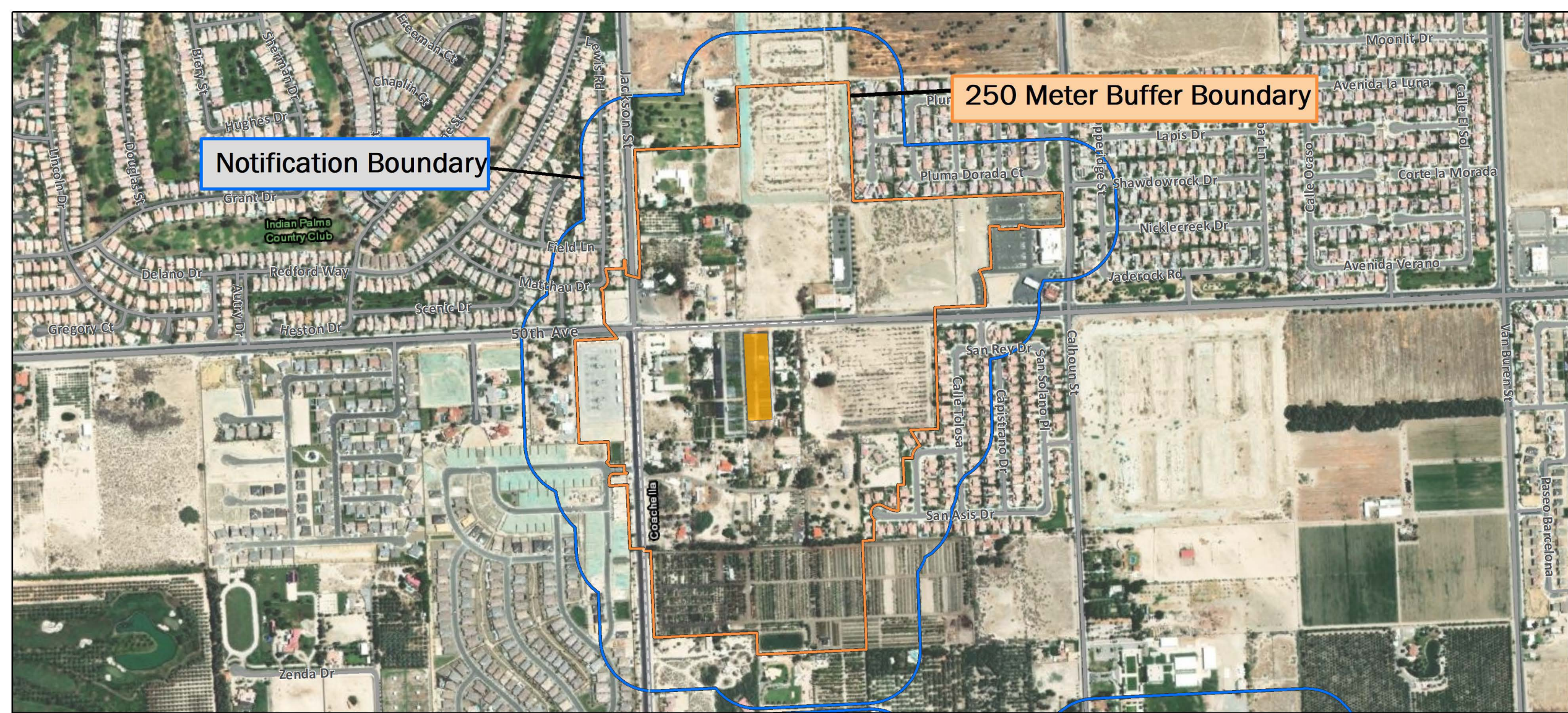
Asian Citrus Psyllid Treatment
 Public Meeting Overview Map- 01/31/2022
 Coachella, Indio, La Quinta, Mecca, Oasis
 Thermal, Vista Santa Rosa
 Riverside County

Printed 1/26/2022

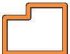
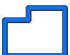

-  250 Meter Buffer Boundary
-  Notification Boundary
-  Commercial Citrus

The 250 meter buffer boundary delineates the maximum geographical extent of the California Department of Food and Agriculture's treatment activities. Treatments will only be conducted on residential, industrial and rights of way properties with citrus and closely related host plants, not on production citrus orchards or nurseries.



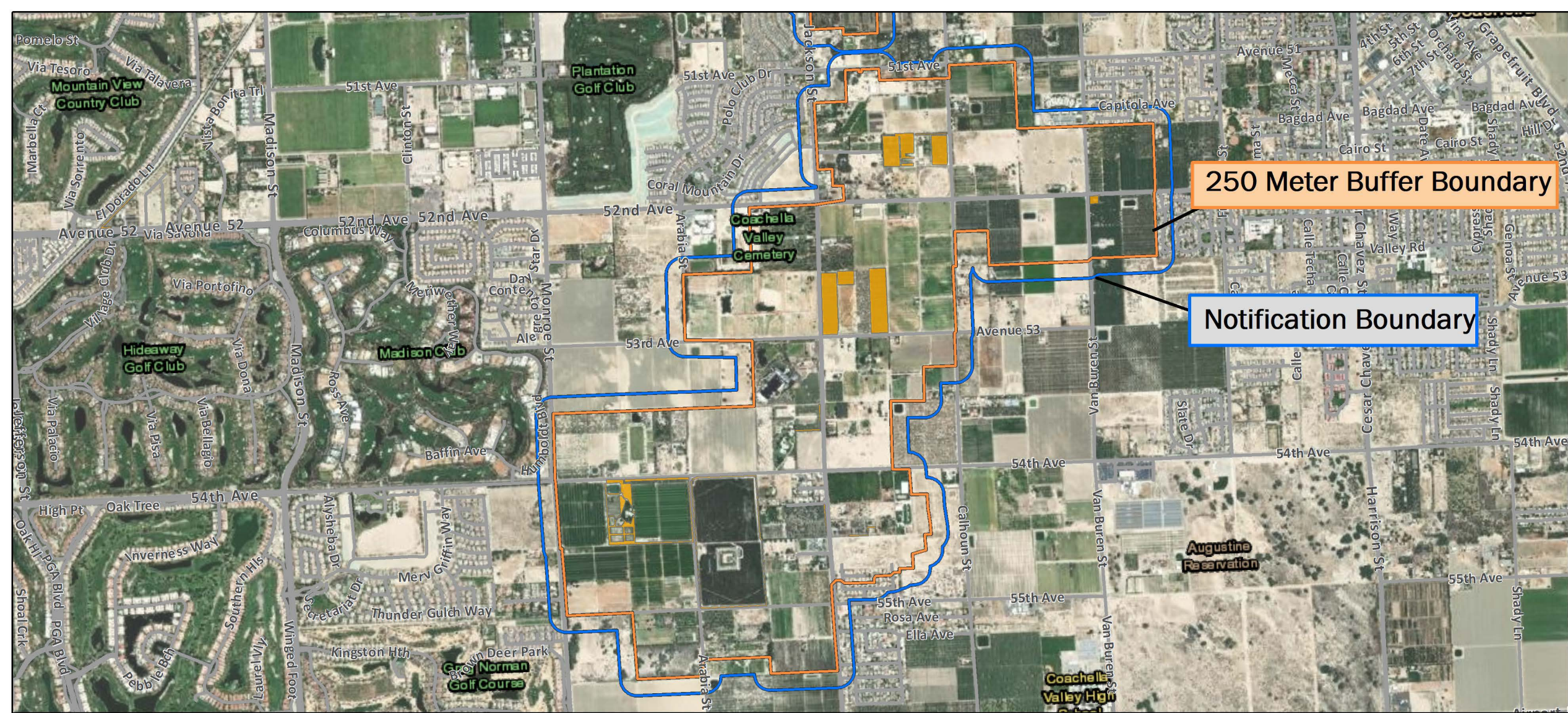


Asian Citrus Psyllid Treatment
 Public Meeting Map (Page 1) - 01/31/2022
 Coachella, Indio, Vista Santa Rosa
 Riverside County
 Printed 1/27/2022

-  250 Meter Buffer Boundary
-  Notification Boundary
-  Commercial Citrus


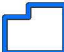

The 250 meter buffer boundary delineates the maximum geographical extent of the California Department of Food and Agriculture's treatment activities. Treatments will only be conducted on residential, industrial and rights of way properties with citrus and closely related host plants, not on production citrus orchards or nurseries.





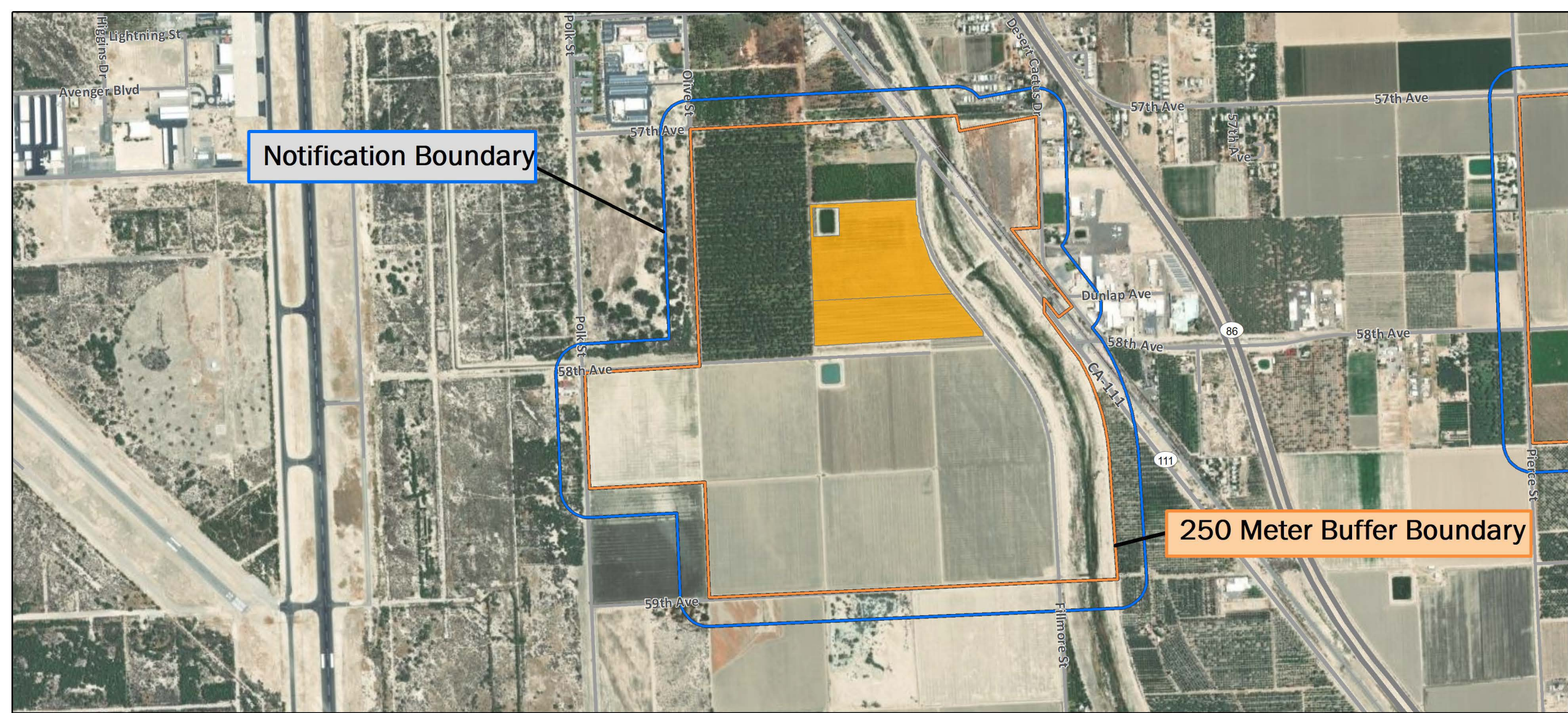
**Asian Citrus Psyllid Treatment
Public Meeting Map (Page 2) - 01/31/2022
Coachella, La Quinta, Indio, Vista Santa Rosa**

Riverside County
Printed 1/27/2022

-  250 Meter Buffer Boundary
-  Notification Boundary
-  Commercial Citrus

The 250 meter buffer boundary delineates the maximum geographical extent of the California Department of Food and Agriculture's treatment activities. Treatments will only be conducted on residential, industrial and rights of way properties with citrus and closely related host plants, not on production citrus orchards or nurseries.


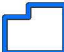





Notification Boundary

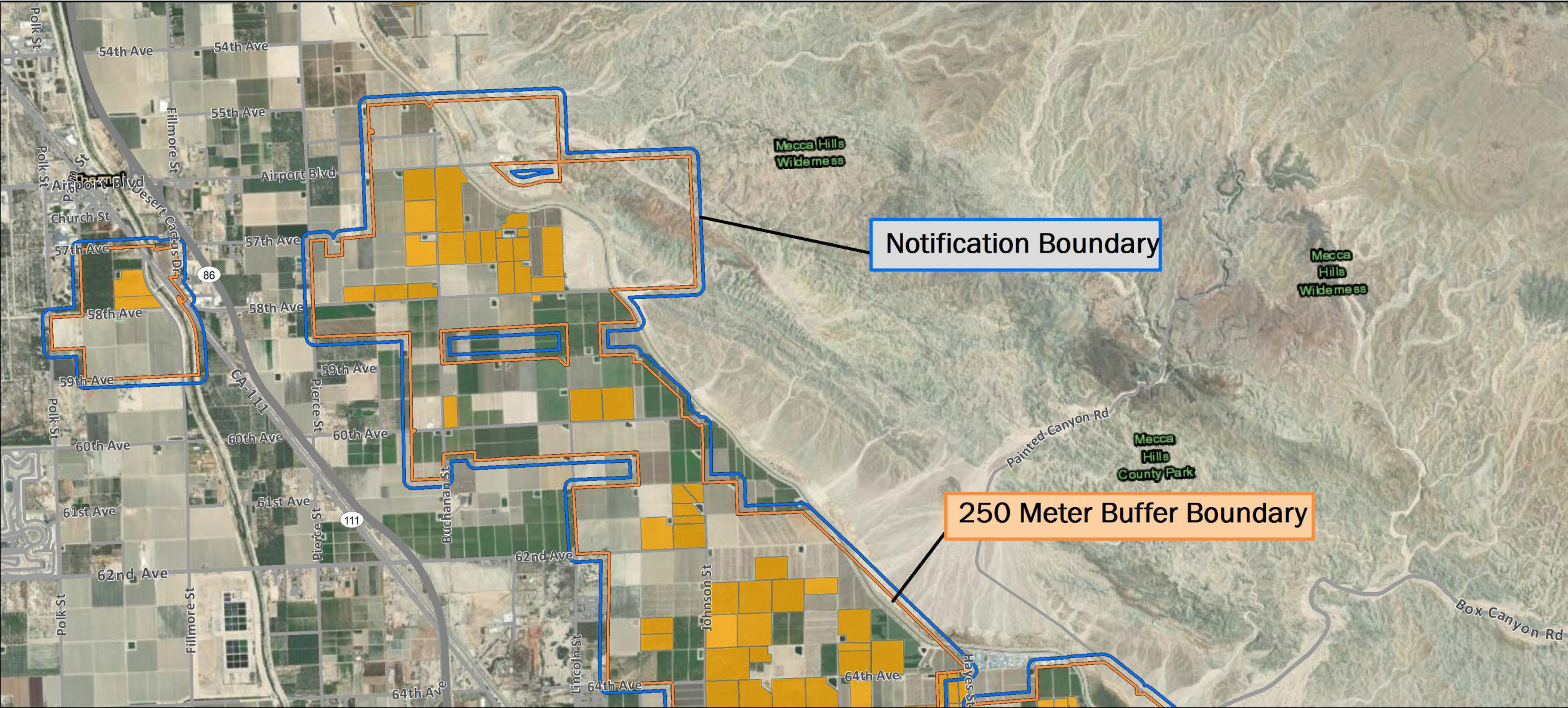
250 Meter Buffer Boundary

Asian Citrus Psyllid Treatment
 Public Meeting Map (Page 3) - 01/31/2022
 Thermal
 Riverside County
 Printed 1/27/2022


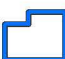

-  250 Meter Buffer Boundary
-  Notification Boundary
-  Commercial Citrus

The 250 meter buffer boundary delineates the maximum geographical extent of the California Department of Food and Agriculture's treatment activities. Treatments will only be conducted on residential, industrial and rights of way properties with citrus and closely related host plants, not on production citrus orchards or nurseries.



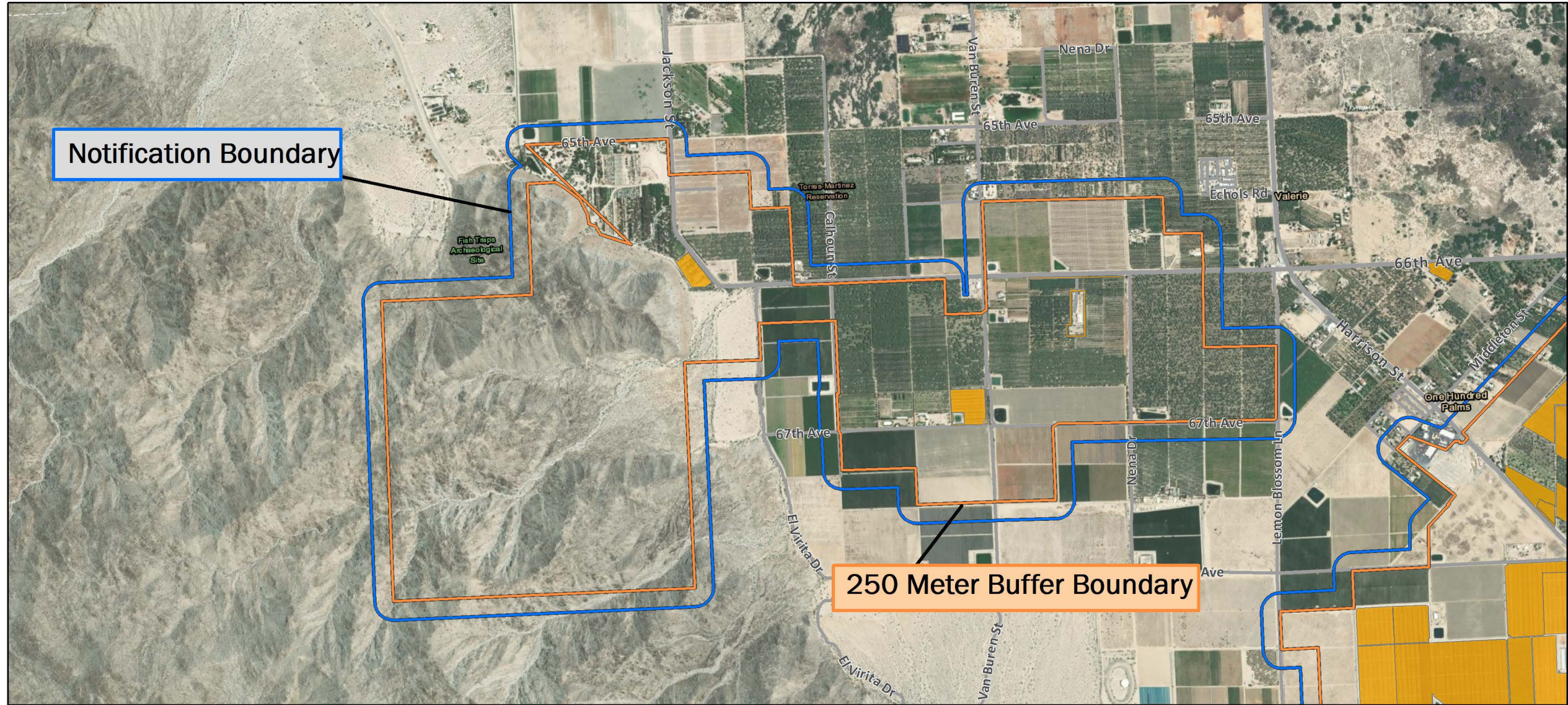


Asian Citrus Psyllid Treatment
Public Meeting Map (Page 4) - 01/31/2022
 Coachella, Mecca, Thermal
 Riverside County
 Printed 1/27/2022

-  250 Meter Buffer Boundary
-  Notification Boundary
-  Commercial Citrus

The 250 meter buffer boundary delineates the maximum geographical extent of the California Department of Food and Agriculture's treatment activities. Treatments will only be conducted on residential, industrial and rights of way properties with citrus and closely related host plants, not on production citrus orchards or nurseries.








Notification Boundary

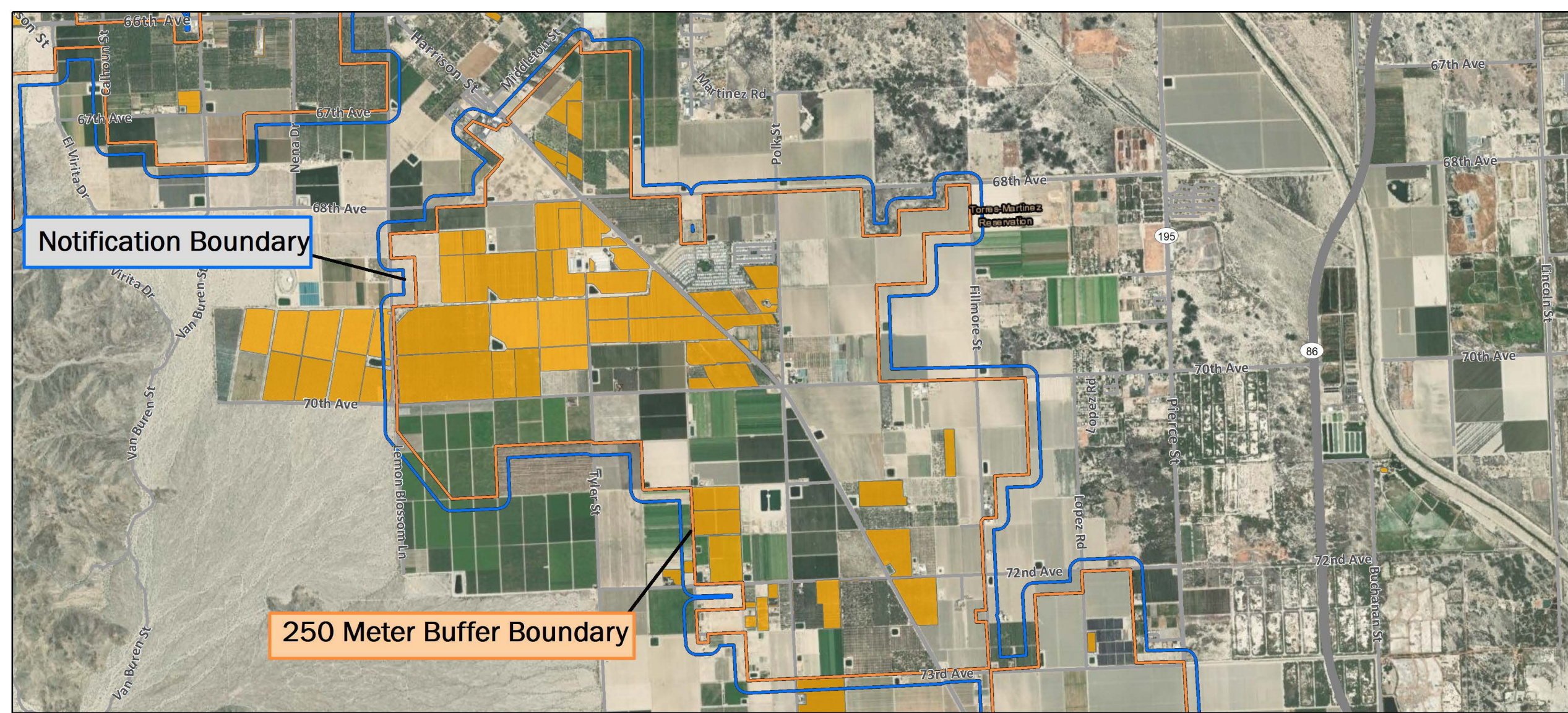
250 Meter Buffer Boundary

Asian Citrus Psyllid Treatment
 Public Meeting Map (Page 5) - 01/31/2022
 Oasis, Vista Santa Rosa
 Riverside County
 Printed 1/27/2022

-  250 Meter Buffer Boundary
-  Notification Boundary
-  Commercial Citrus

The 250 meter buffer boundary delineates the maximum geographical extent of the California Department of Food and Agriculture's treatment activities. Treatments will only be conducted on residential, industrial and rights of way properties with citrus and closely related host plants, not on production citrus orchards or nurseries.


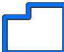





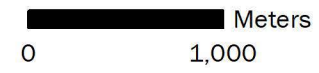
Notification Boundary

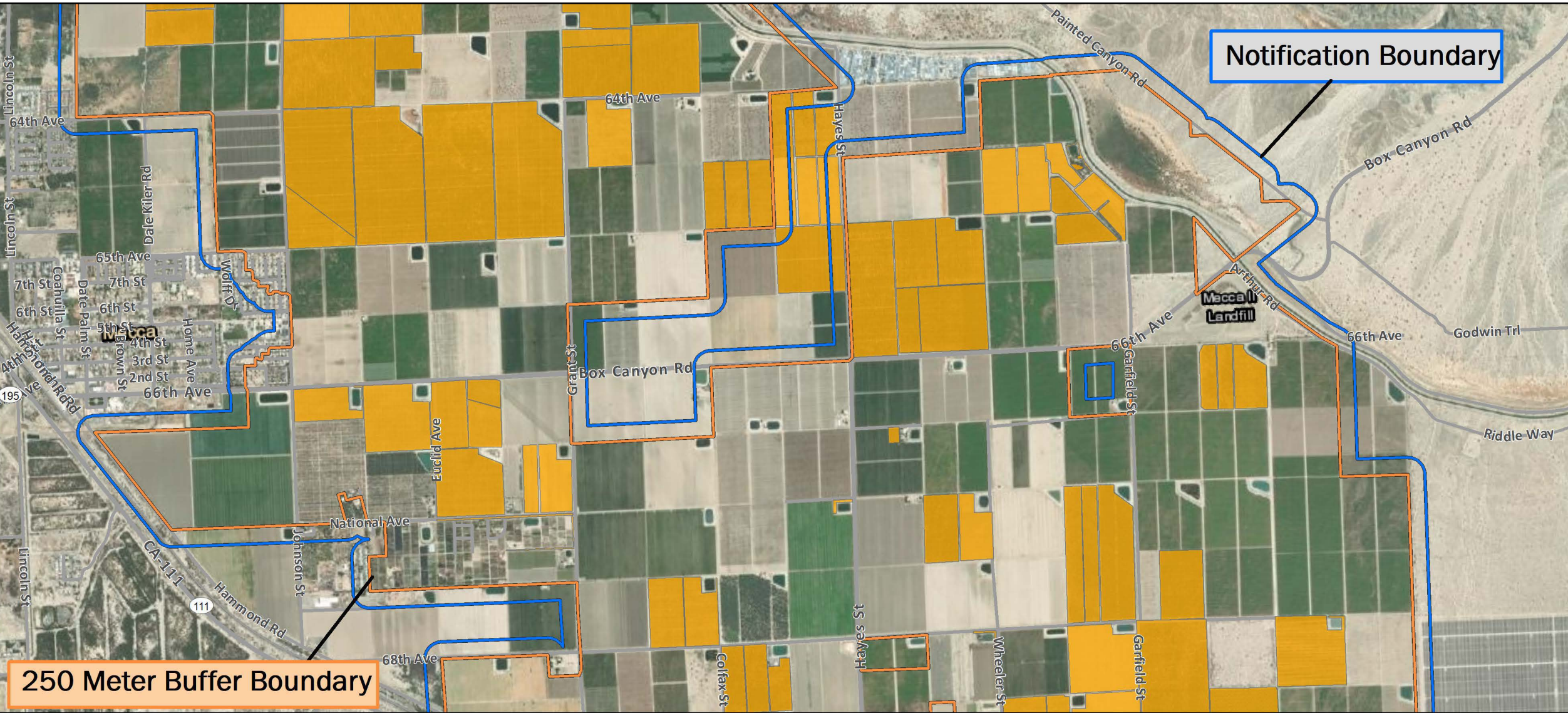
250 Meter Buffer Boundary

Asian Citrus Psyllid Treatment
 Public Meeting Map (Page 6) - 01/31/2022
 Oasis
 Riverside County
 Printed 1/27/2022

-  250 Meter Buffer Boundary
-  Notification Boundary
-  Commercial Citrus

The 250 meter buffer boundary delineates the maximum geographical extent of the California Department of Food and Agriculture's treatment activities. Treatments will only be conducted on residential, industrial and rights of way properties with citrus and closely related host plants, not on production citrus orchards or nurseries.








250 Meter Buffer Boundary

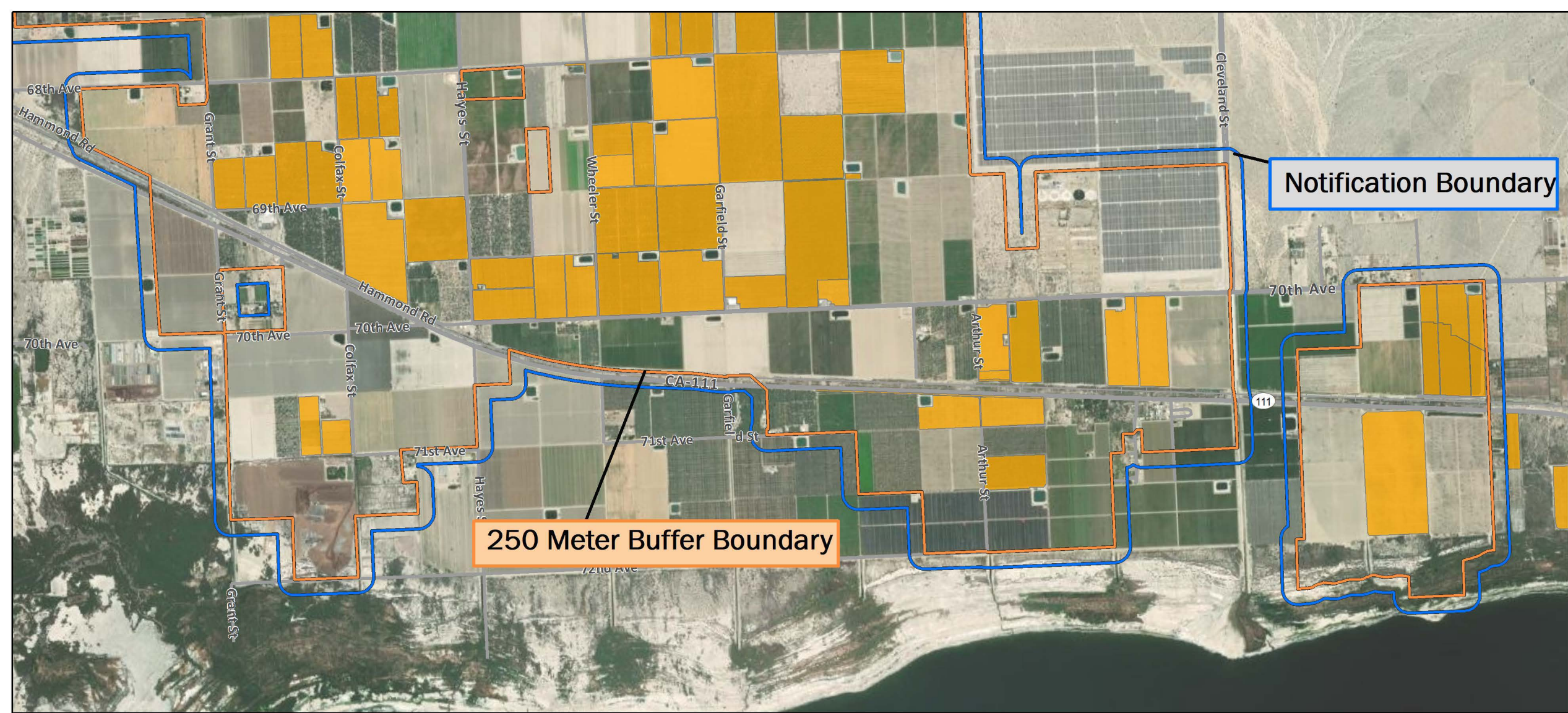
Notification Boundary

Asian Citrus Psyllid Treatment
 Public Meeting Map (Page 7) - 01/31/2022
 Mecca
 Riverside County
 Printed 1/27/2022




-  250 Meter Buffer Boundary
-  Notification Boundary
-  Commercial Citrus

The 250 meter buffer boundary delineates the maximum geographical extent of the California Department of Food and Agriculture's treatment activities. Treatments will only be conducted on residential, industrial and rights of way properties with citrus and closely related host plants, not on production citrus orchards or nurseries.



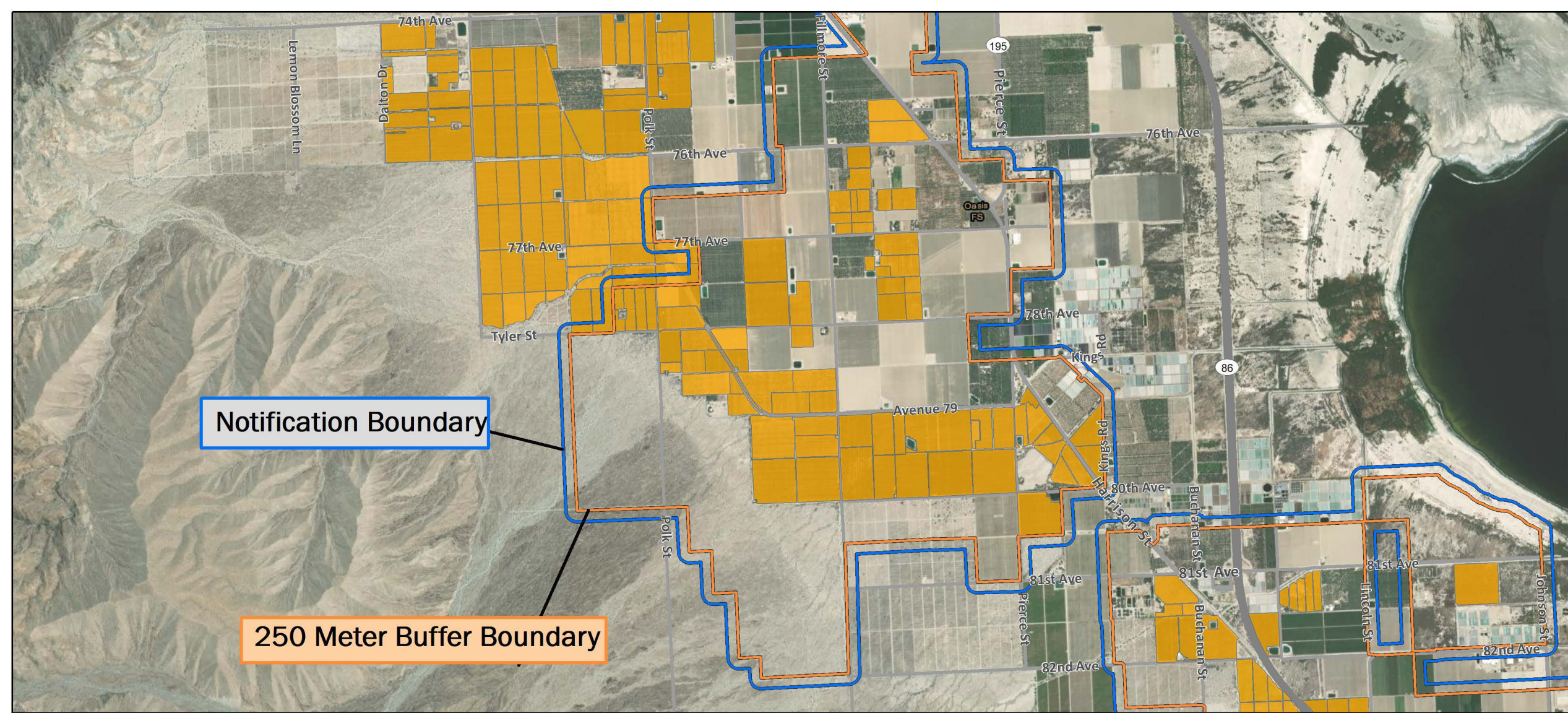


Asian Citrus Psyllid Treatment
 Public Meeting Map (Page 8) - 01/31/2022
 Mecca
 Riverside County
 Printed 1/27/2022

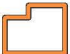
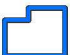

-  250 Meter Buffer Boundary
-  Notification Boundary
-  Commercial Citrus

The 250 meter buffer boundary delineates the maximum geographical extent of the California Department of Food and Agriculture's treatment activities. Treatments will only be conducted on residential, industrial and rights of way properties with citrus and closely related host plants, not on production citrus orchards or nurseries.

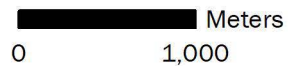


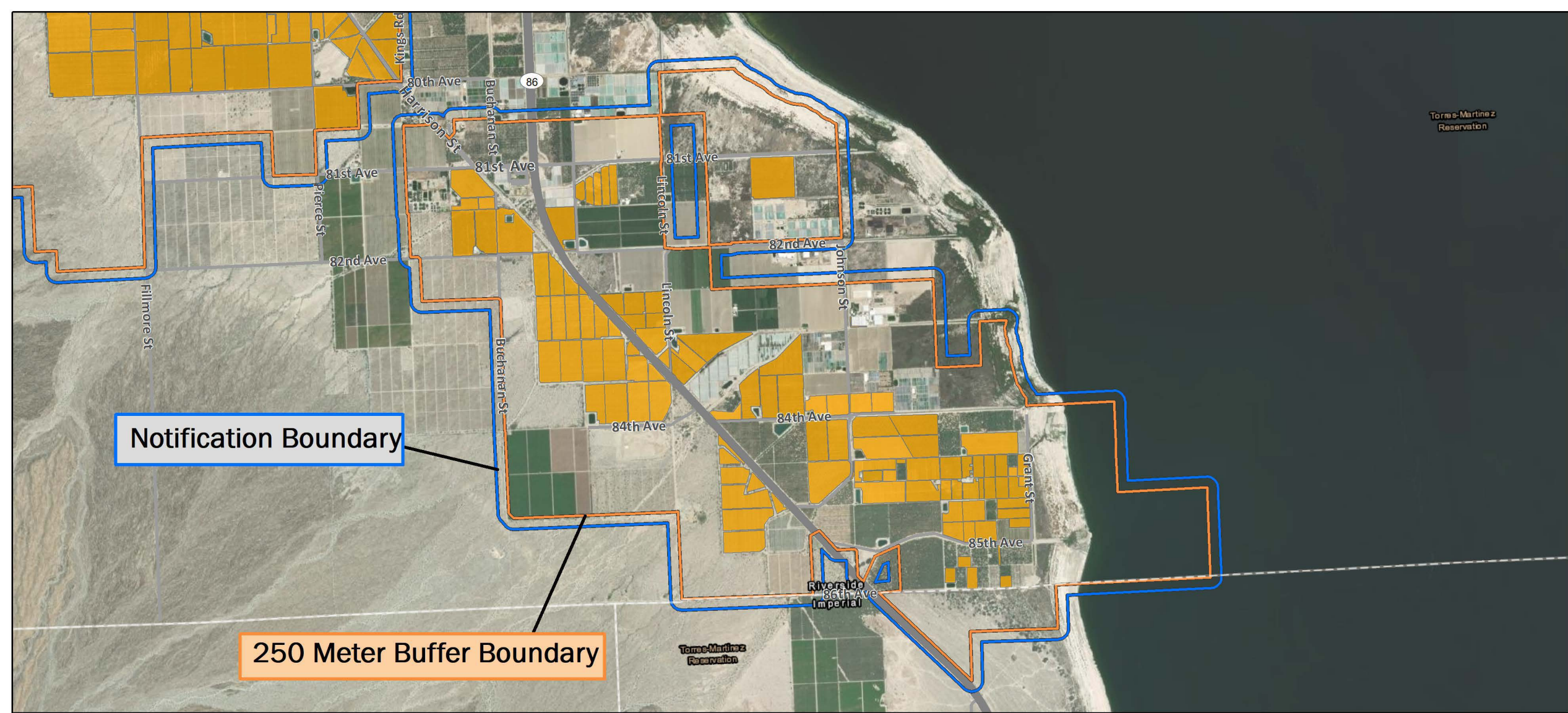


Asian Citrus Psyllid Treatment
 Public Meeting Map (Page 9) - 01/31/2022
 Oasis
 Riverside County
 Printed 1/27/2022

-  250 Meter Buffer Boundary
-  Notification Boundary
-  Commercial Citrus

The 250 meter buffer boundary delineates the maximum geographical extent of the California Department of Food and Agriculture's treatment activities. Treatments will only be conducted on residential, industrial and rights of way properties with citrus and closely related host plants, not on production citrus orchards or nurseries.








Notification Boundary

250 Meter Buffer Boundary

Asian Citrus Psyllid Treatment
 Public Meeting Map (Page 10) - 01/31/2022
 Oasis
 Riverside County
 Printed 1/27/2022

-  250 Meter Buffer Boundary
-  Notification Boundary
-  Commercial Citrus

The 250 meter buffer boundary delineates the maximum geographical extent of the California Department of Food and Agriculture's treatment activities. Treatments will only be conducted on residential, industrial and rights of way properties with citrus and closely related host plants, not on production citrus orchards or nurseries.

