




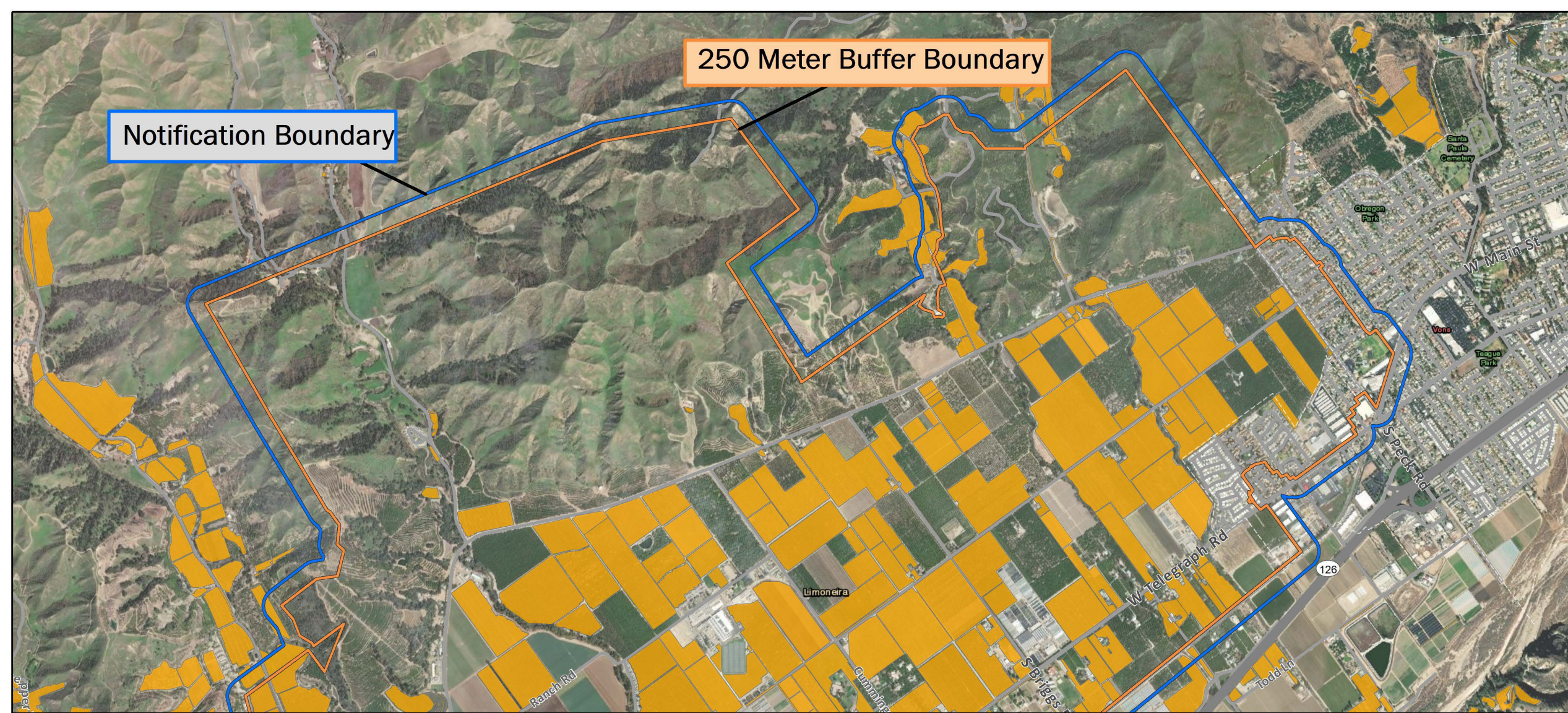
Asian Citrus Psyllid Treatment
 Public Meeting Map - 02/16/2022
 Camarillo, Moorpark, Santa Paula, Ventura
 Ventura County

Printed 1/31/2022


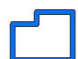

-  250 Meter Buffer Boundary
-  Notification Boundary
-  Commercial Citrus

The 250 meter buffer boundary delineates the maximum geographical extent of the California Department of Food and Agriculture's treatment activities. Treatments will only be conducted on residential, industrial and rights of way properties with citrus and closely related host plants, not on production citrus orchards or nurseries.



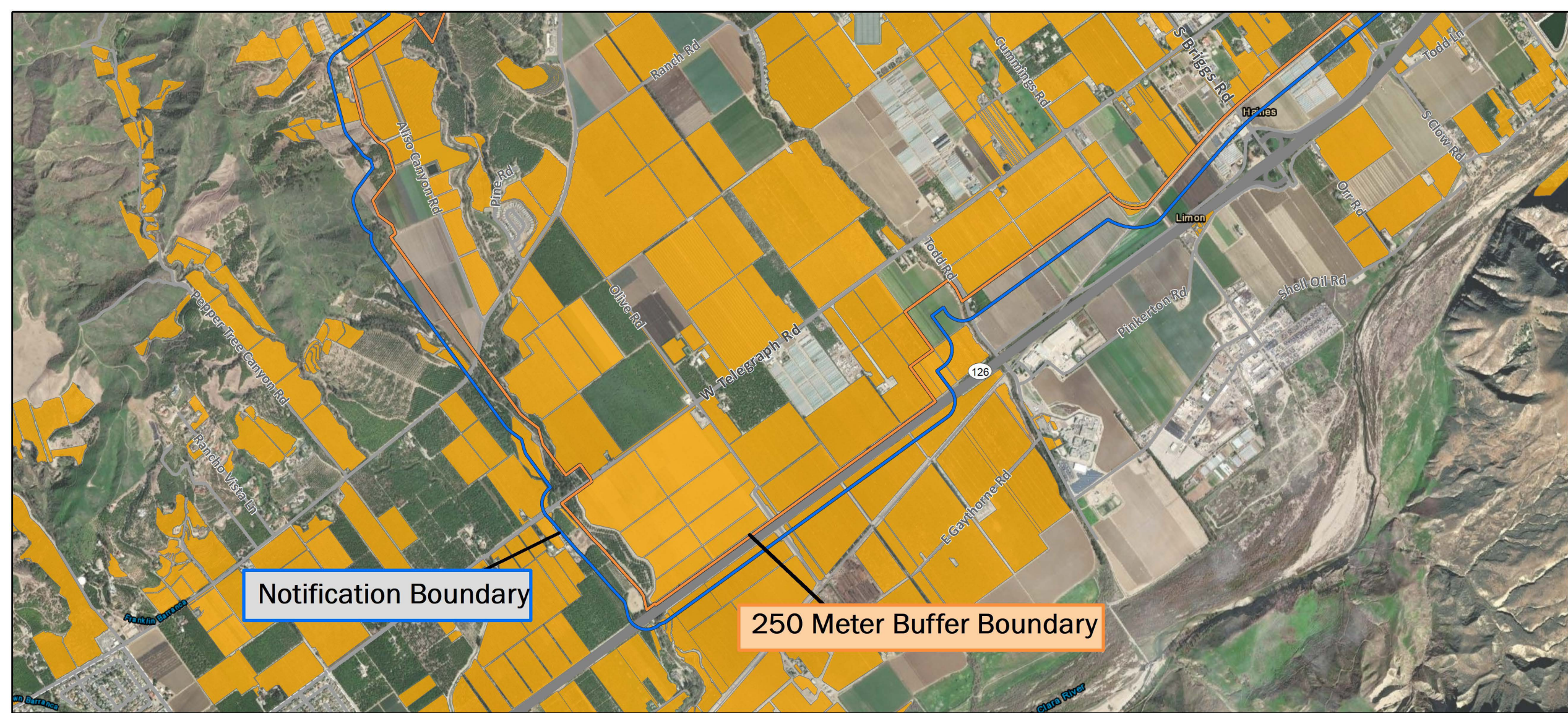


Asian Citrus Psyllid Treatment
 Public Meeting Map (Page 1) 02/16/2022
 Santa Paula
 Ventura County
 Printed 1/31/2022

-  250 Meter Buffer Boundary
-  Notification Boundary
-  Commercial Citrus

The 250 meter buffer boundary delineates the maximum geographical extent of the California Department of Food and Agriculture's treatment activities. Treatments will only be conducted on residential, industrial and rights of way properties with citrus and closely related host plants, not on production citrus orchards or nurseries.


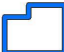





Notification Boundary

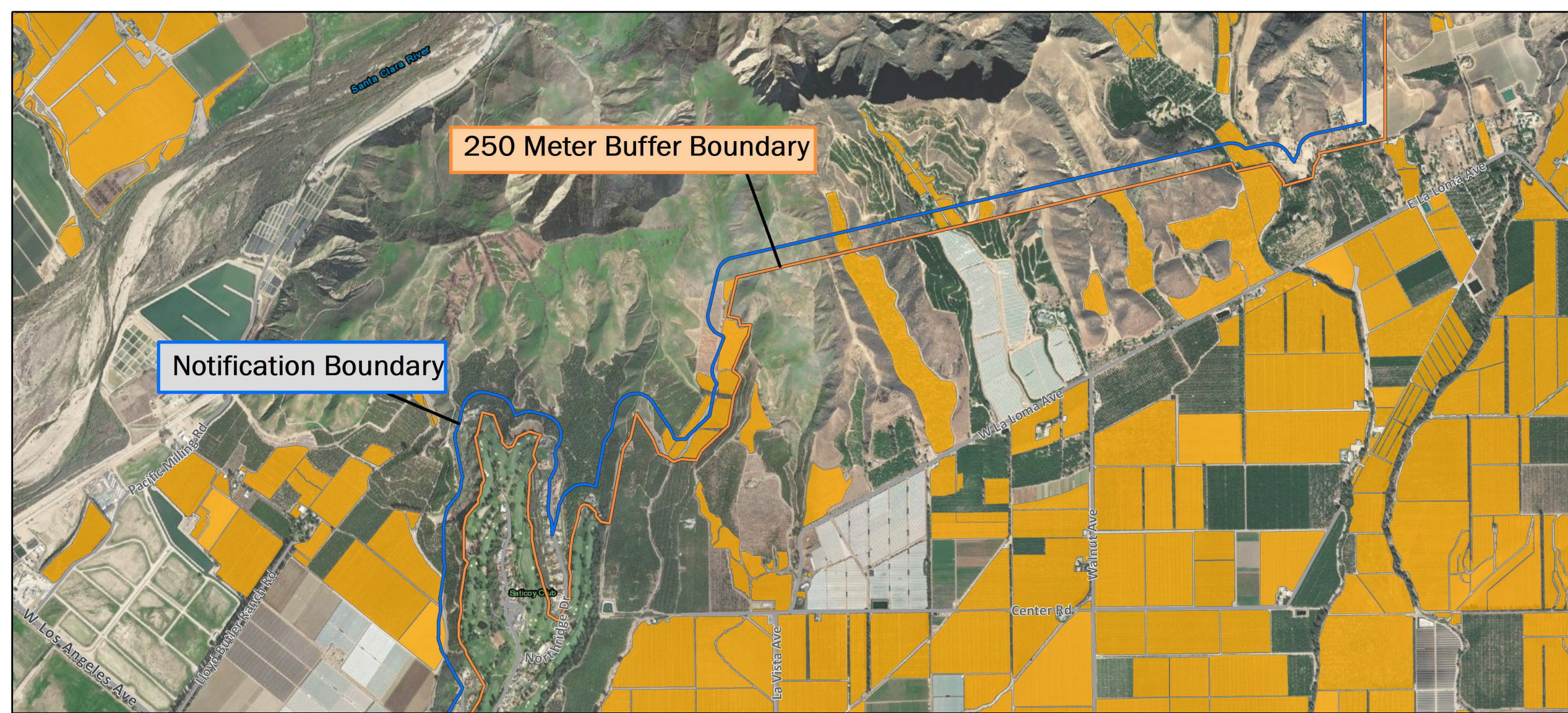
250 Meter Buffer Boundary

Asian Citrus Psyllid Treatment
 Public Meeting Map (Page 2) 02/16/2022
 Ventura
 Ventura County
 Printed 1/31/2022

-  250 Meter Buffer Boundary
-  Notification Boundary
-  Commercial Citrus

The 250 meter buffer boundary delineates the maximum geographical extent of the California Department of Food and Agriculture's treatment activities. Treatments will only be conducted on residential, industrial and rights of way properties with citrus and closely related host plants, not on production citrus orchards or nurseries.


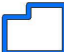





Notification Boundary

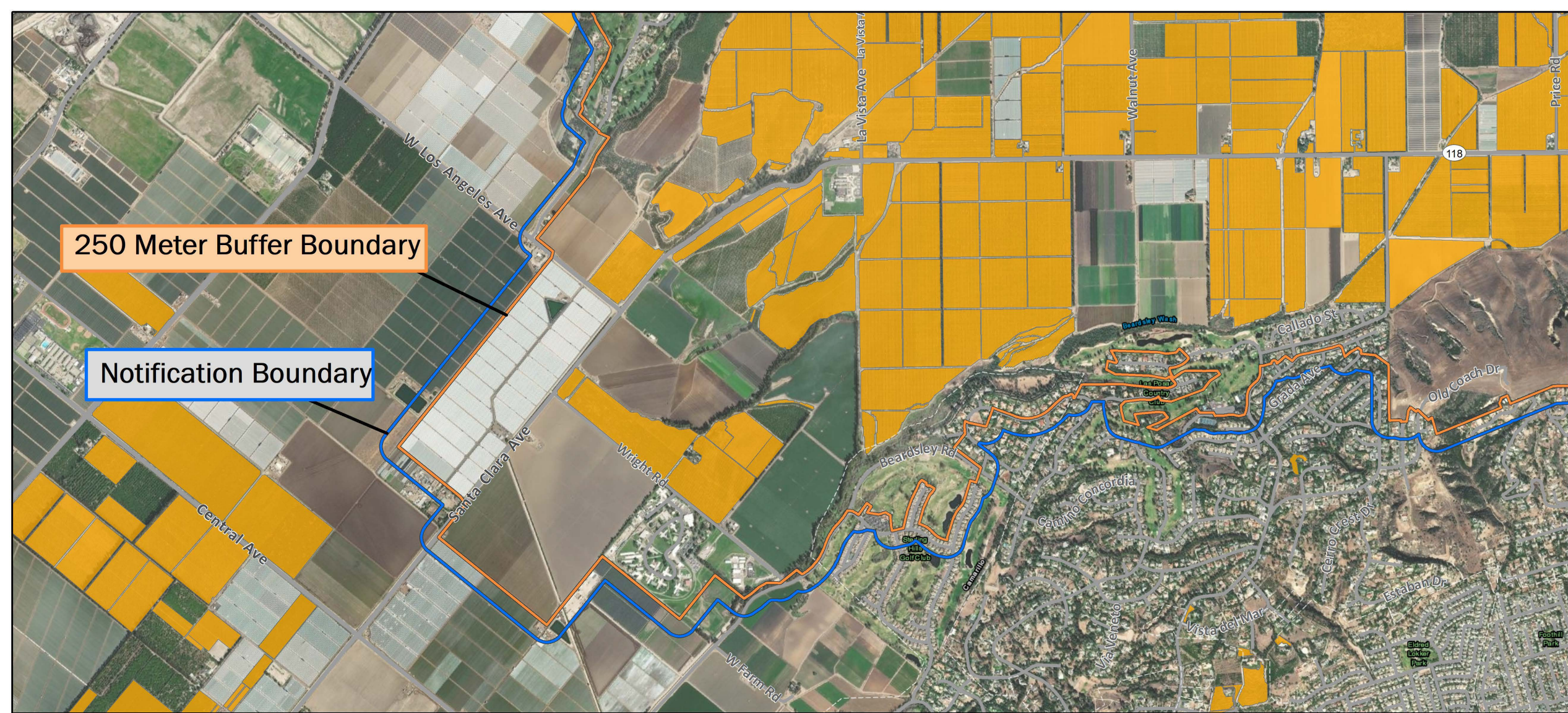
250 Meter Buffer Boundary

Asian Citrus Psyllid Treatment
 Public Meeting Map (Page 3) 02/16/2022
 Ventura
 Ventura County
 Printed 1/31/2022

-  250 Meter Buffer Boundary
-  Notification Boundary
-  Commercial Citrus

The 250 meter buffer boundary delineates the maximum geographical extent of the California Department of Food and Agriculture's treatment activities. Treatments will only be conducted on residential, industrial and rights of way properties with citrus and closely related host plants, not on production citrus orchards or nurseries.








250 Meter Buffer Boundary

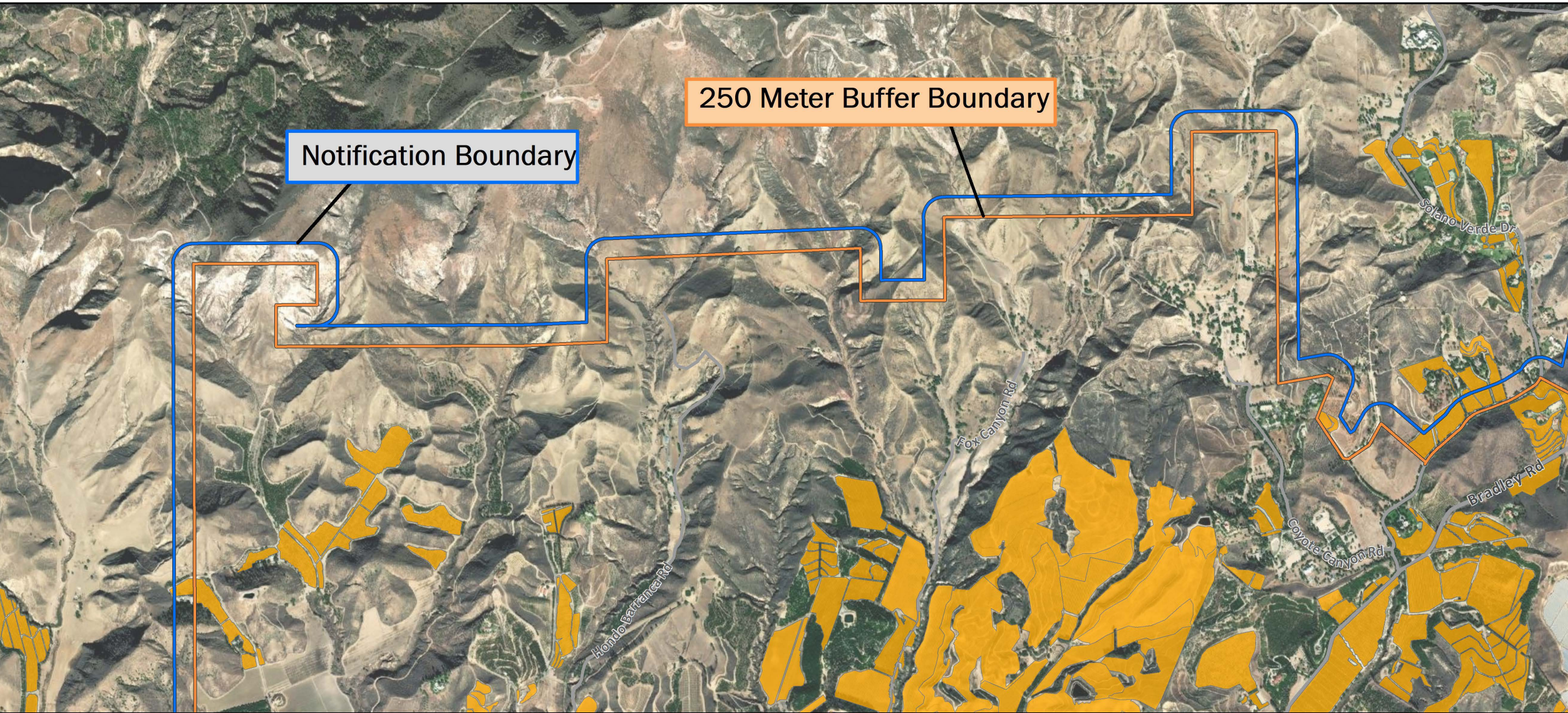
Notification Boundary

Asian Citrus Psyllid Treatment
 Public Meeting Map (Page 4) 02/16/2022
 Ventura
 Ventura County
 Printed 1/31/2022


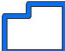

-  250 Meter Buffer Boundary
-  Notification Boundary
-  Commercial Citrus

The 250 meter buffer boundary delineates the maximum geographical extent of the California Department of Food and Agriculture's treatment activities. Treatments will only be conducted on residential, industrial and rights of way properties with citrus and closely related host plants, not on production citrus orchards or nurseries.





Asian Citrus Psyllid Treatment
 Public Meeting Map (Page 5) 02/16/2022
 Ventura
 Ventura County
 Printed 1/31/2022

-  250 Meter Buffer Boundary
-  Notification Boundary
-  Commercial Citrus


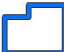

The 250 meter buffer boundary delineates the maximum geographical extent of the California Department of Food and Agriculture's treatment activities. Treatments will only be conducted on residential, industrial and rights of way properties with citrus and closely related host plants, not on production citrus orchards or nurseries.



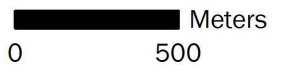
Notification Boundary

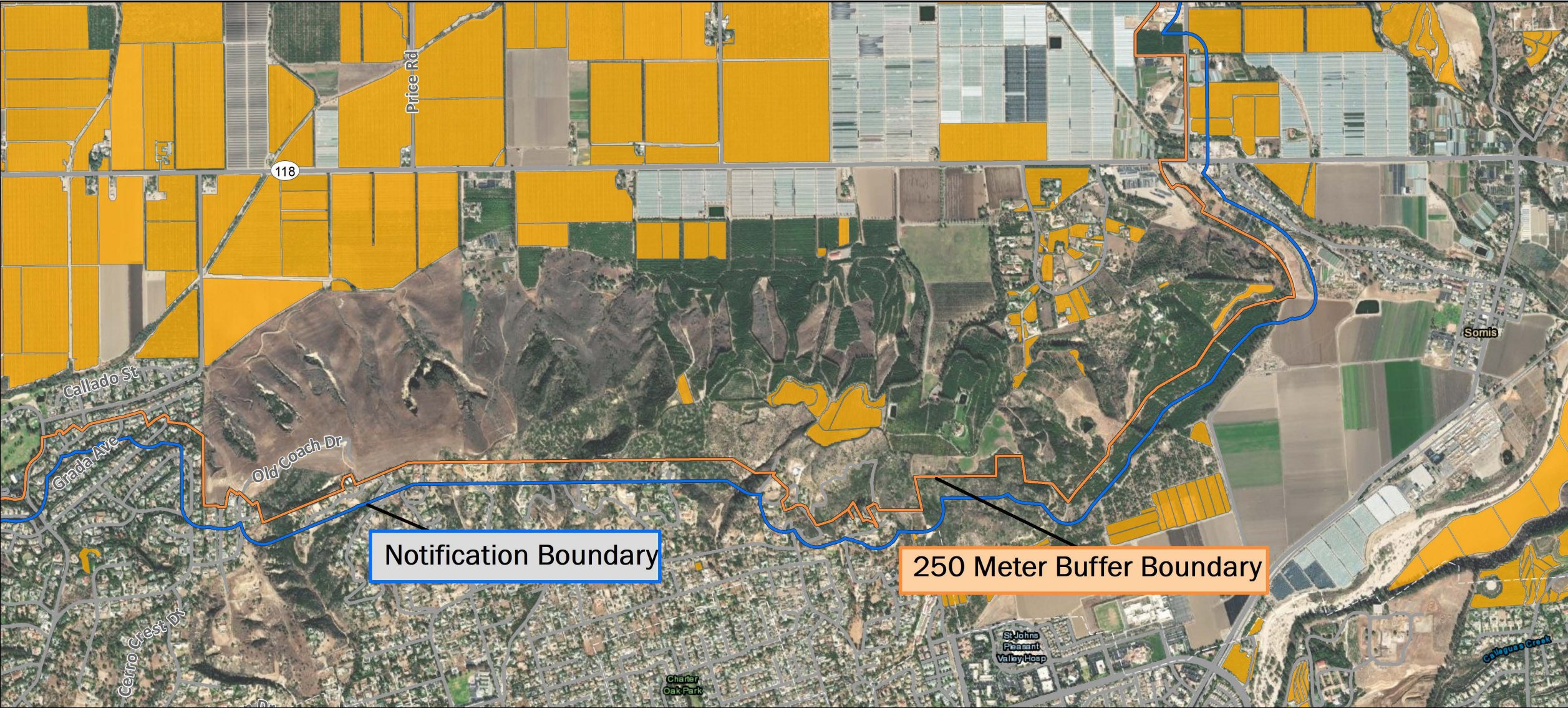
250 Meter Buffer Boundary

Asian Citrus Psyllid Treatment
Public Meeting Map (Page 6) 02/16/2022
Ventura
Ventura County
Printed 1/31/2022


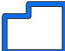

-  250 Meter Buffer Boundary
-  Notification Boundary
-  Commercial Citrus

The 250 meter buffer boundary delineates the maximum geographical extent of the California Department of Food and Agriculture's treatment activities. Treatments will only be conducted on residential, industrial and rights of way properties with citrus and closely related host plants, not on production citrus orchards or nurseries.

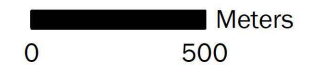


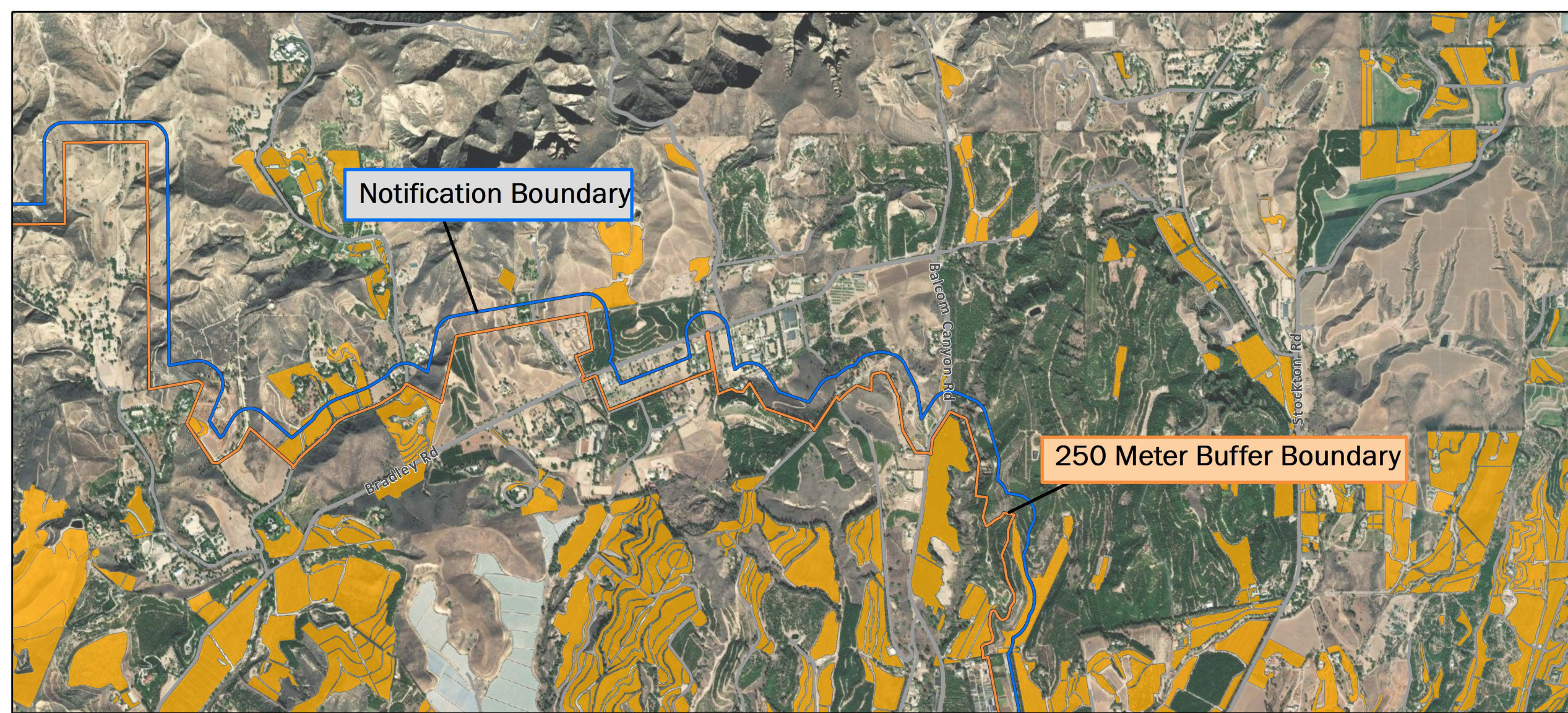


Asian Citrus Psyllid Treatment
 Public Meeting Map (Page 7) 02/16/2022
 Ventura
 Ventura County
 Printed 1/31/2022


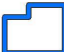

-  250 Meter Buffer Boundary
-  Notification Boundary
-  Commercial Citrus

The 250 meter buffer boundary delineates the maximum geographical extent of the California Department of Food and Agriculture's treatment activities. Treatments will only be conducted on residential, industrial and rights of way properties with citrus and closely related host plants, not on production citrus orchards or nurseries.

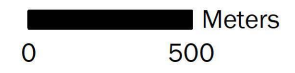


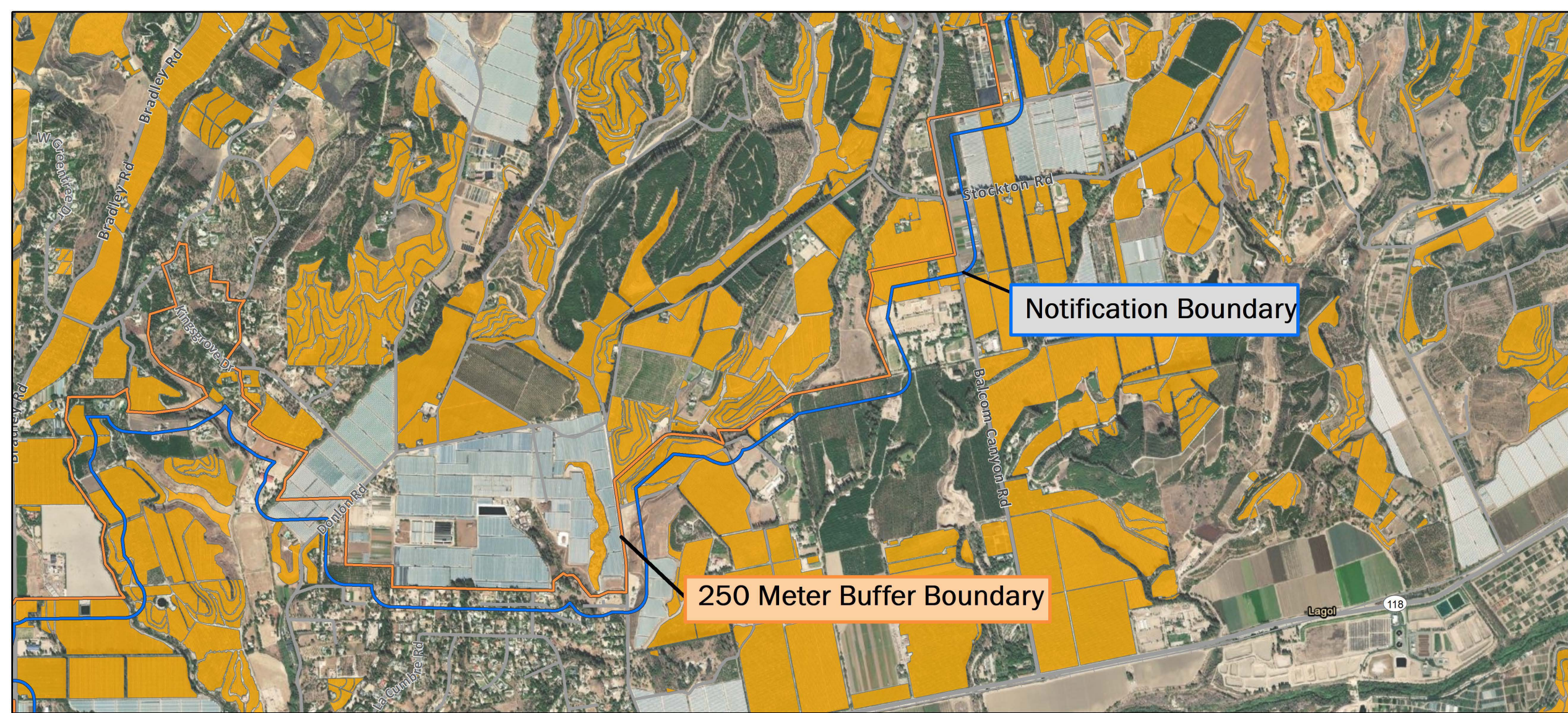


Asian Citrus Psyllid Treatment
 Public Meeting Map (Page 8) 02/16/2022
 Ventura
 Ventura County
 Printed 1/31/2022


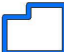

-  250 Meter Buffer Boundary
-  Notification Boundary
-  Commercial Citrus

The 250 meter buffer boundary delineates the maximum geographical extent of the California Department of Food and Agriculture's treatment activities. Treatments will only be conducted on residential, industrial and rights of way properties with citrus and closely related host plants, not on production citrus orchards or nurseries.

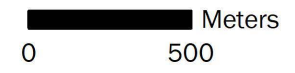


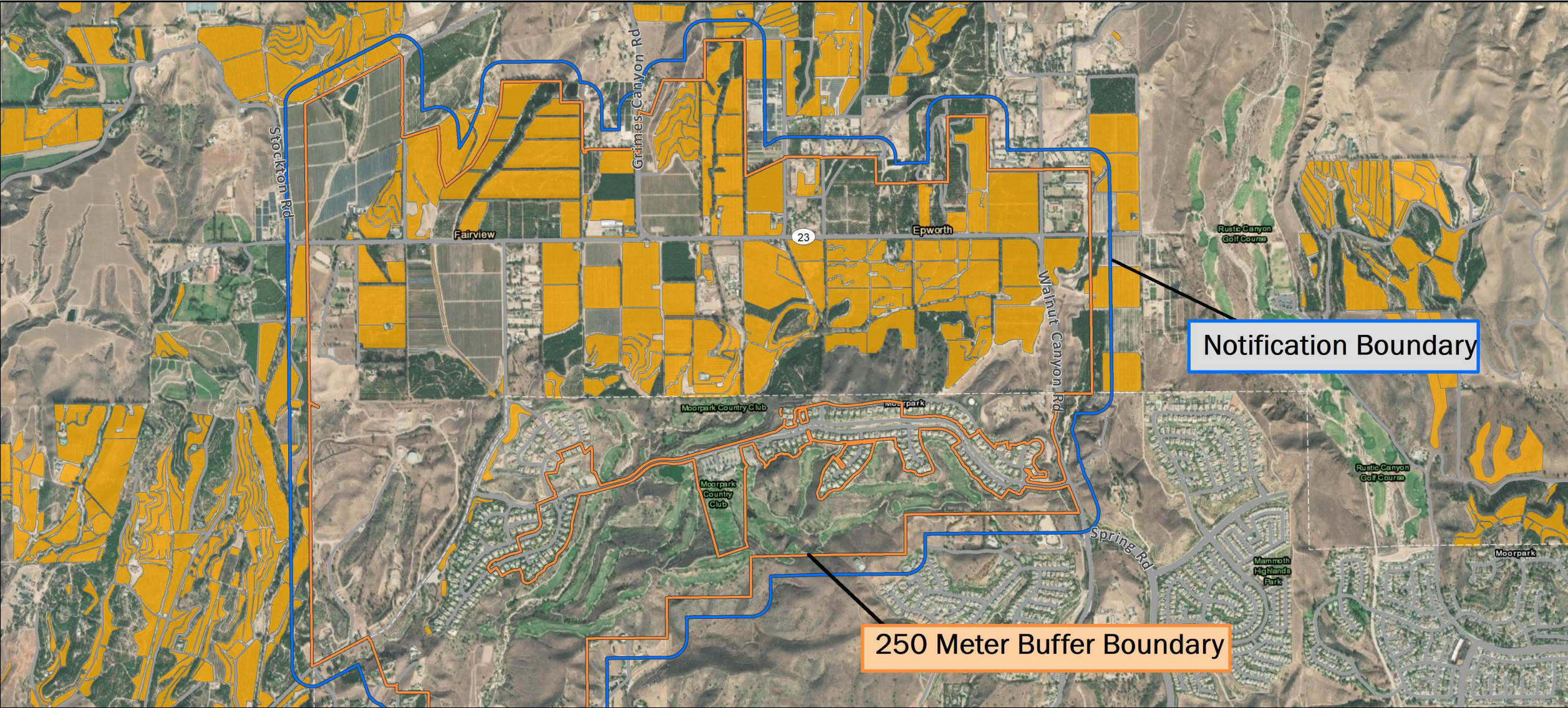


Asian Citrus Psyllid Treatment
 Public Meeting Map (Page 9) 02/16/2022
 Ventura
 Ventura County
 Printed 1/31/2022


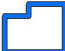

-  250 Meter Buffer Boundary
-  Notification Boundary
-  Commercial Citrus

The 250 meter buffer boundary delineates the maximum geographical extent of the California Department of Food and Agriculture's treatment activities. Treatments will only be conducted on residential, industrial and rights of way properties with citrus and closely related host plants, not on production citrus orchards or nurseries.







Asian Citrus Psyllid Treatment
 Public Meeting Map (Page 10) 02/16/2022
 Moorpark
 Ventura County
 Printed 1/31/2022

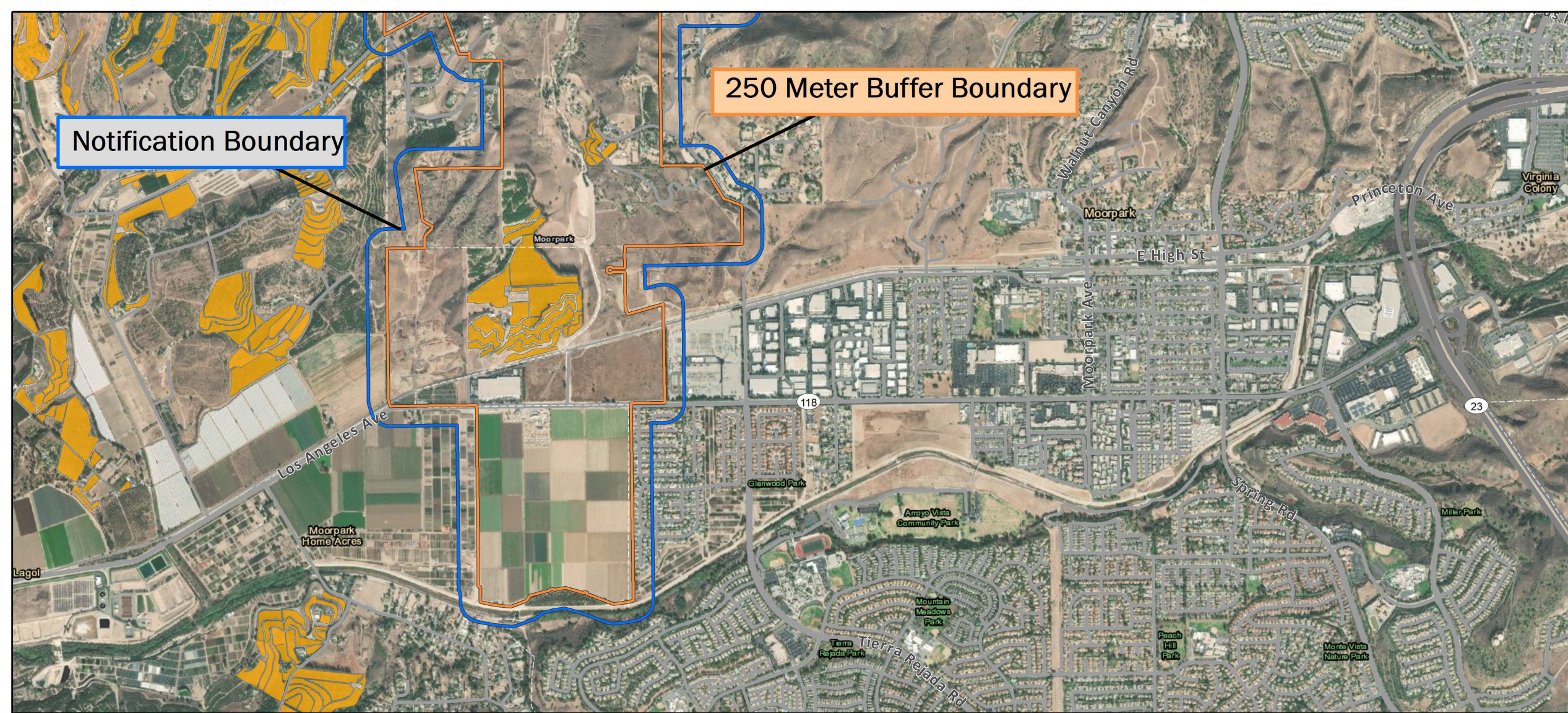
-  250 Meter Buffer Boundary
-  Notification Boundary
-  Commercial Citrus

The 250 meter buffer boundary delineates the maximum geographical extent of the California Department of Food and Agriculture's treatment activities. Treatments will only be conducted on residential, industrial and rights of way properties with citrus and closely related host plants, not on production citrus orchards or nurseries.

0 500 Meters


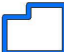

CITRUS PEST & DISEASE PREVENTION DIVISION CALIFORNIA DEPARTMENT OF FOOD & AGRICULTURE



250 Meter Buffer Boundary

Notification Boundary

Asian Citrus Psyllid Treatment
 Public Meeting Map (Page 11) 02/16/2022
 Moorpark
 Ventura County
 Printed 1/31/2022

-  250 Meter Buffer Boundary
-  Notification Boundary
-  Commercial Citrus

The 250 meter buffer boundary delineates the maximum geographical extent of the California Department of Food and Agriculture's treatment activities. Treatments will only be conducted on residential, industrial and rights of way properties with citrus and closely related host plants, not on production citrus orchards or nurseries.

