
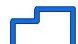

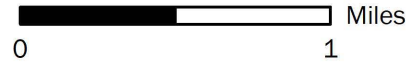
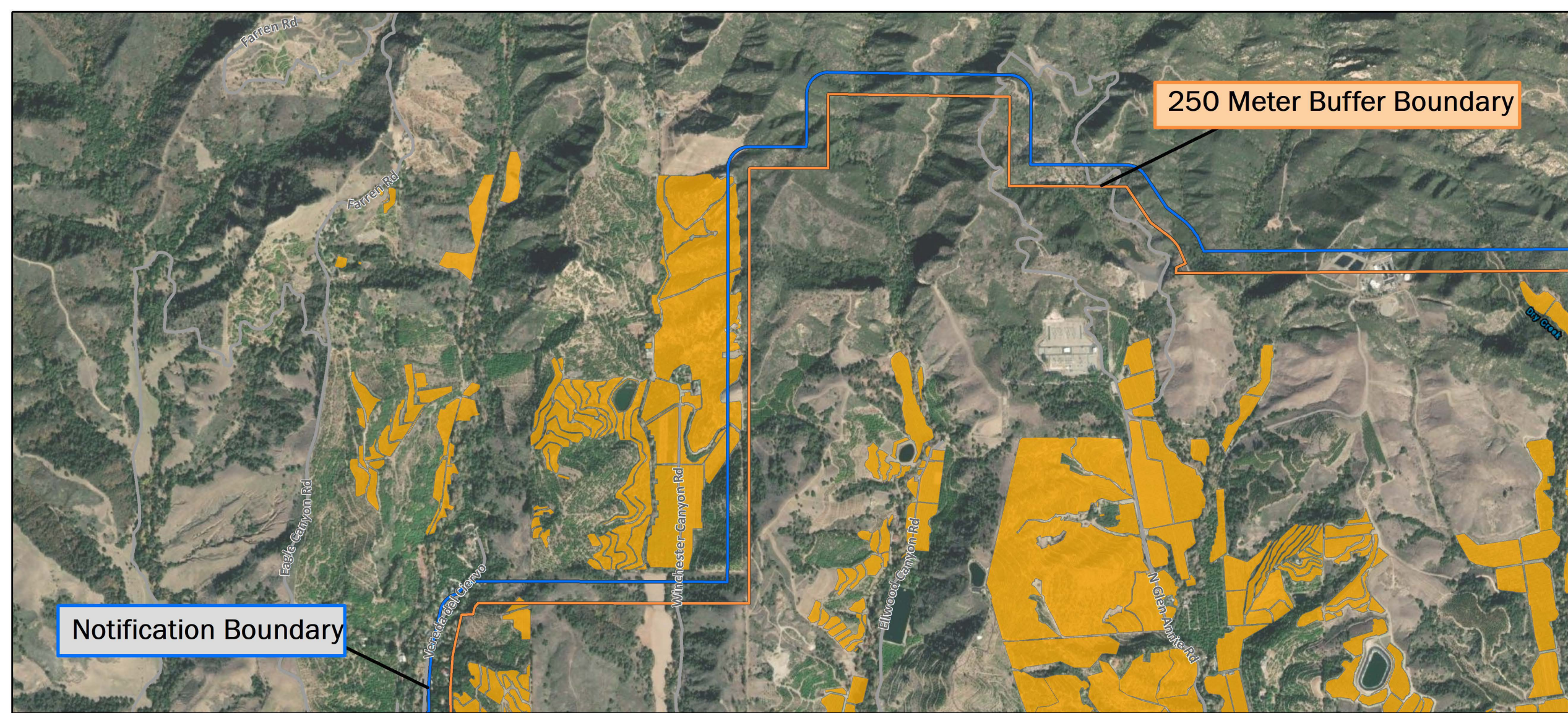


Asian Citrus Psyllid Treatment
 Public Meeting Overview Map - 02/03/2022
 Santa Barbara, Goleta
 Santa Barbara County
 Printed 1/27/2022

-  250 Meter Buffer Boundary
-  Notification Boundary
-  Commercial Citrus

The 250 meter buffer boundary delineates the maximum geographical extent of the California Department of Food and Agriculture's treatment activities. Treatments will only be conducted on residential, industrial and rights of way properties with citrus and closely related host plants, not on production citrus orchards or nurseries.


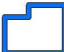





Notification Boundary

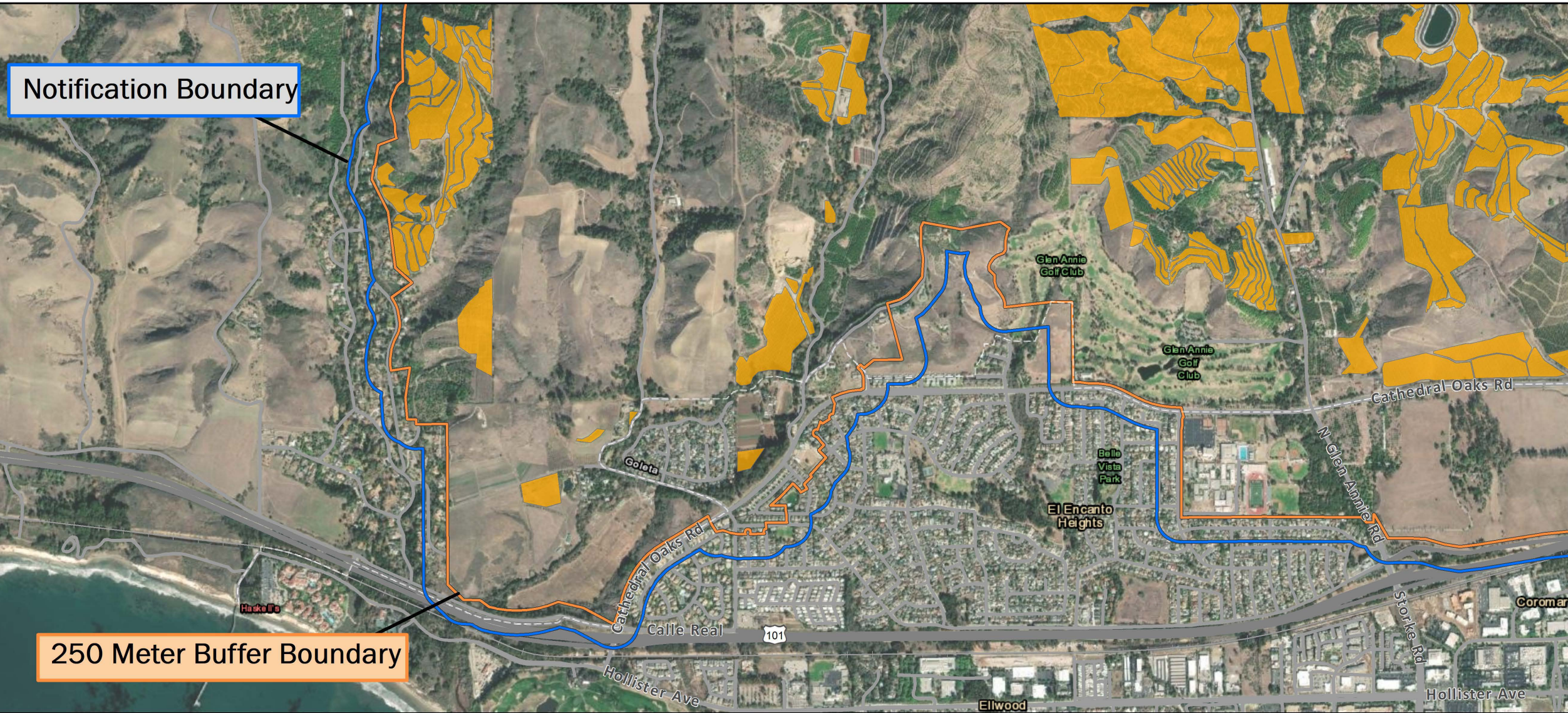
250 Meter Buffer Boundary

Asian Citrus Psyllid Treatment
 Public Meeting Map (Page 1) 02/03/2022
 Santa Barbara
 Santa Barbara County
 Printed 1/27/2022

-  250 Meter Buffer Boundary
-  Notification Boundary
-  Commercial Citrus

The 250 meter buffer boundary delineates the maximum geographical extent of the California Department of Food and Agriculture's treatment activities. Treatments will only be conducted on residential, industrial and rights of way properties with citrus and closely related host plants, not on production citrus orchards or nurseries.


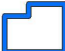





Notification Boundary

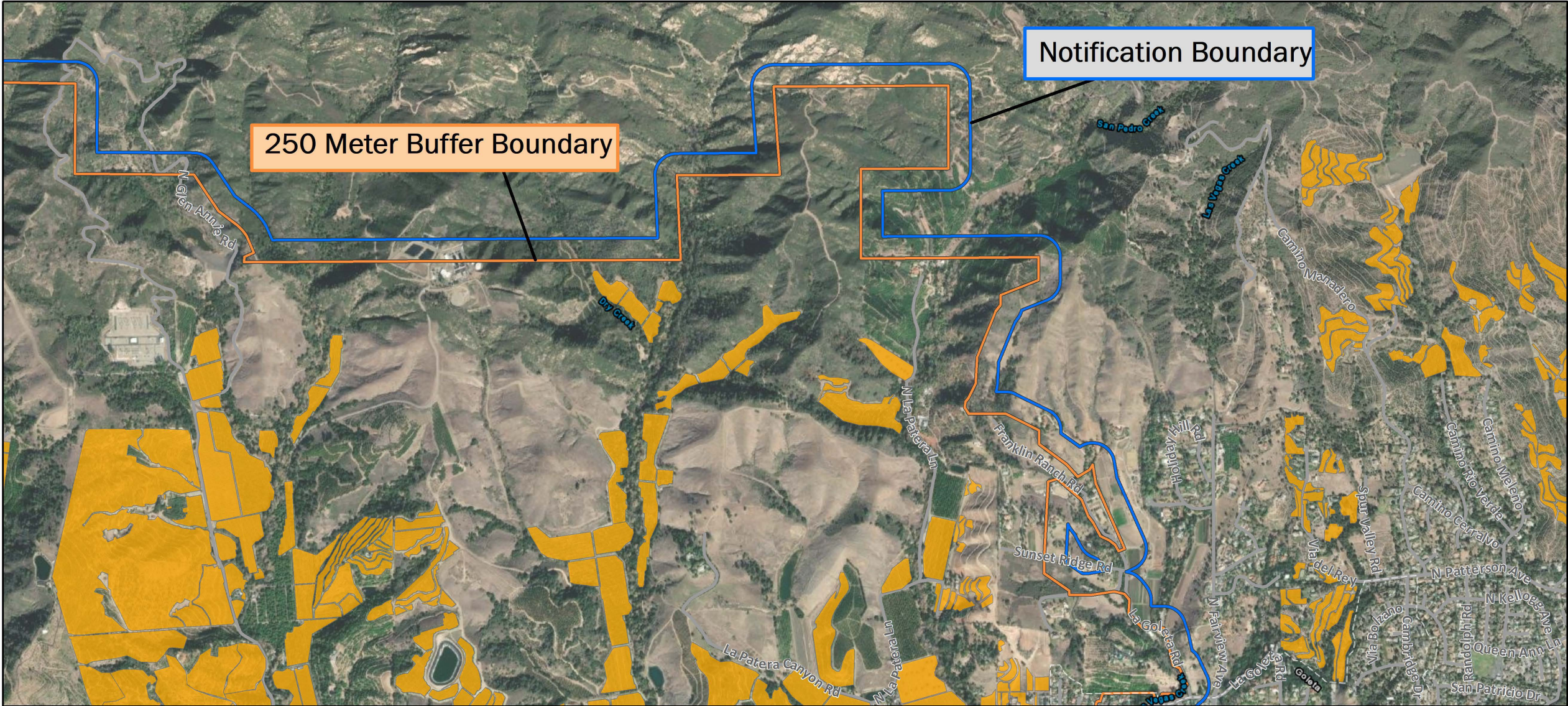
250 Meter Buffer Boundary

Asian Citrus Psyllid Treatment
 Public Meeting Map (Page 2) 02/03/2022
 Santa Barbara
 Santa Barbara County
 Printed 1/27/2022




-  250 Meter Buffer Boundary
-  Notification Boundary
-  Commercial Citrus

The 250 meter buffer boundary delineates the maximum geographical extent of the California Department of Food and Agriculture's treatment activities. Treatments will only be conducted on residential, industrial and rights of way properties with citrus and closely related host plants, not on production citrus orchards or nurseries.





Asian Citrus Psyllid Treatment
 Public Meeting Map (Page 3) 02/03/2022
 Santa Barbara
 Santa Barbara County
 Printed 1/27/2022

-  250 Meter Buffer Boundary
-  Notification Boundary
-  Commercial Citrus

The 250 meter buffer boundary delineates the maximum geographical extent of the California Department of Food and Agriculture's treatment activities. Treatments will only be conducted on residential, industrial and rights of way properties with citrus and closely related host plants, not on production citrus orchards or nurseries.


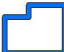





Notification Boundary

250 Meter Buffer Boundary

Asian Citrus Psyllid Treatment
 Public Meeting Map (Page 4) 02/03/2022
 Santa Barbara
 Santa Barbara County
 Printed 1/27/2022

-  250 Meter Buffer Boundary
-  Notification Boundary
-  Commercial Citrus

The 250 meter buffer boundary delineates the maximum geographical extent of the California Department of Food and Agriculture's treatment activities. Treatments will only be conducted on residential, industrial and rights of way properties with citrus and closely related host plants, not on production citrus orchards or nurseries.

