
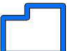

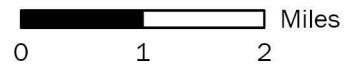


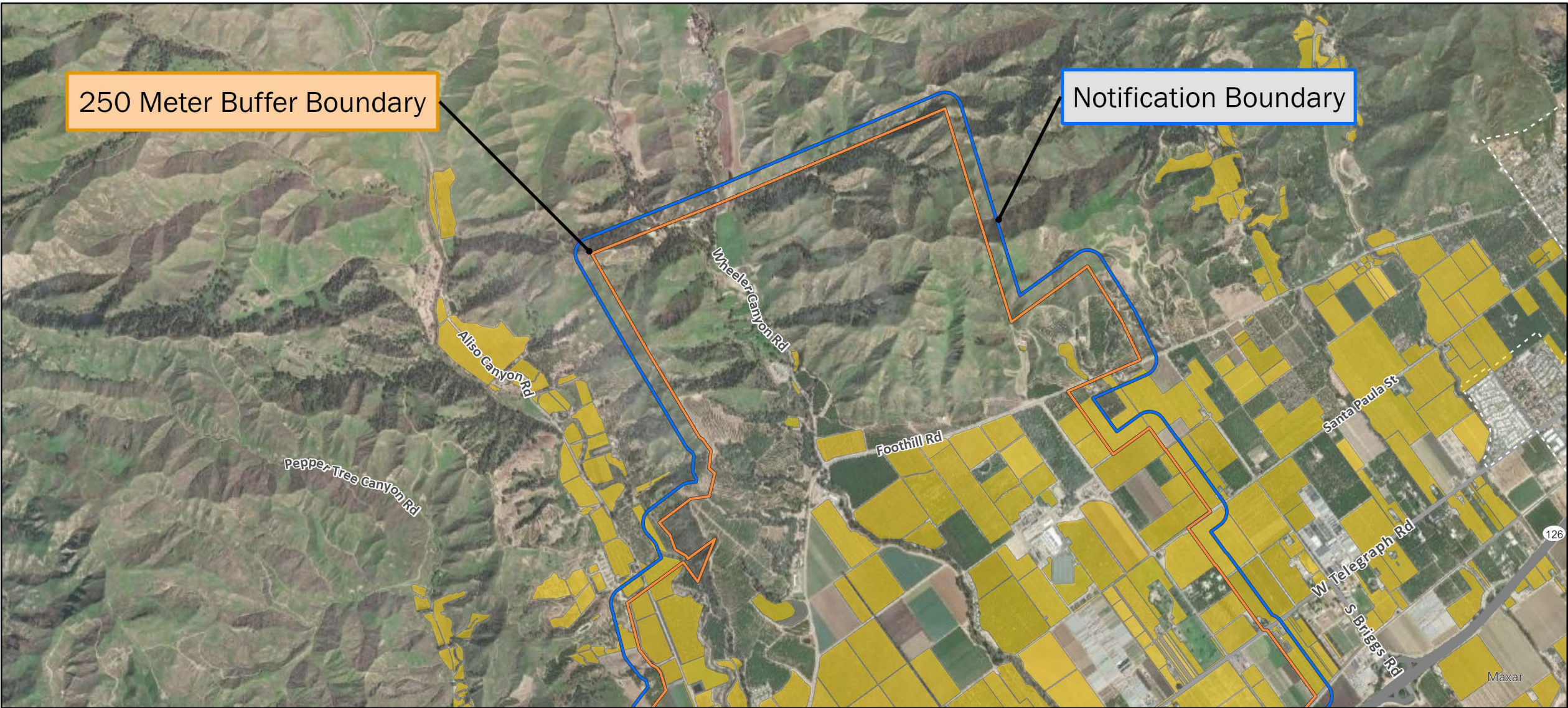
Asian Citrus Psyllid Treatment  
Public Meeting Overview Map - 08/10/2022  
Camarillo, Santa Paula  
Ventura County  
Printed 8/2/2022

-  250 Meter Buffer Boundary
-  Notification Boundary
-  Commercial Citrus




The 250 meter buffer boundary delineates the maximum geographical extent of the California Department of Food and Agriculture's treatment activities. Treatments will only be conducted on residential, industrial and rights of way properties with citrus and closely related host plants, not on production citrus orchards or nurseries.







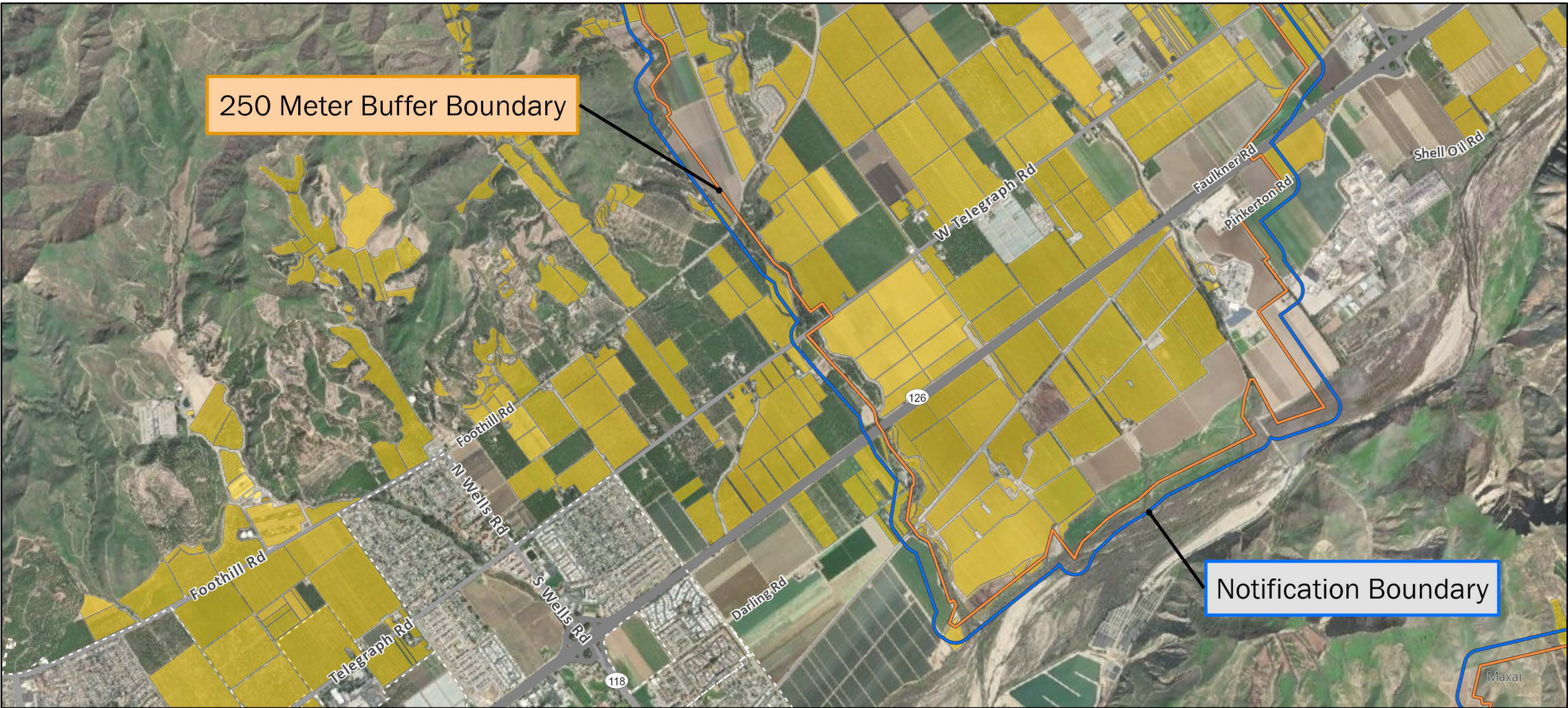
Asian Citrus Psyllid Treatment  
Public Meeting Map (Page 1) - 08/10/2022  
Santa Paula  
Ventura County  
Printed 8/2/2022

-  250 Meter Buffer Boundary
-  Notification Boundary
-  Commercial Citrus




The 250 meter buffer boundary delineates the maximum geographical extent of the California Department of Food and Agriculture's treatment activities. Treatments will only be conducted on residential, industrial and rights of way properties with citrus and closely related host plants, not on production citrus orchards or nurseries.







Asian Citrus Psyllid Treatment  
Public Meeting Map (Page 2) - 08/10/2022  
Santa Paula  
Ventura County  
Printed 8/2/2022

-  250 Meter Buffer Boundary
-  Notification Boundary
-  Commercial Citrus

The 250 meter buffer boundary delineates the maximum geographical extent of the California Department of Food and Agriculture's treatment activities. Treatments will only be conducted on residential, industrial and rights of way properties with citrus and closely related host plants, not on production citrus orchards or nurseries.



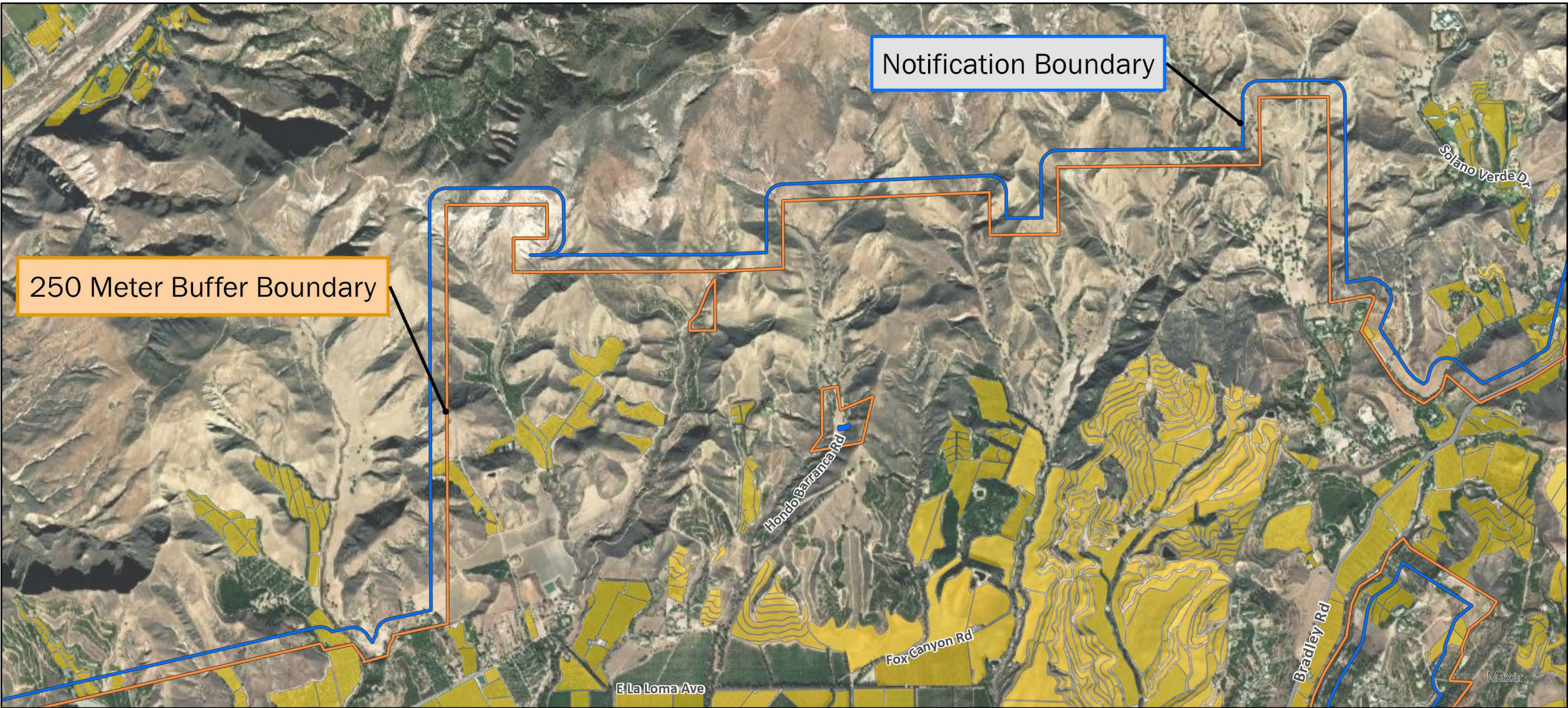
0 1,000 Meters






CITRUS PEST & DISEASE PREVENTION DIVISION

cdfa  
CALIFORNIA DEPARTMENT OF FOOD & AGRICULTURE





Asian Citrus Psyllid Treatment  
Public Meeting Map (Page 3) - 08/10/2022  
Camarillo  
Ventura County  
Printed 8/2/2022

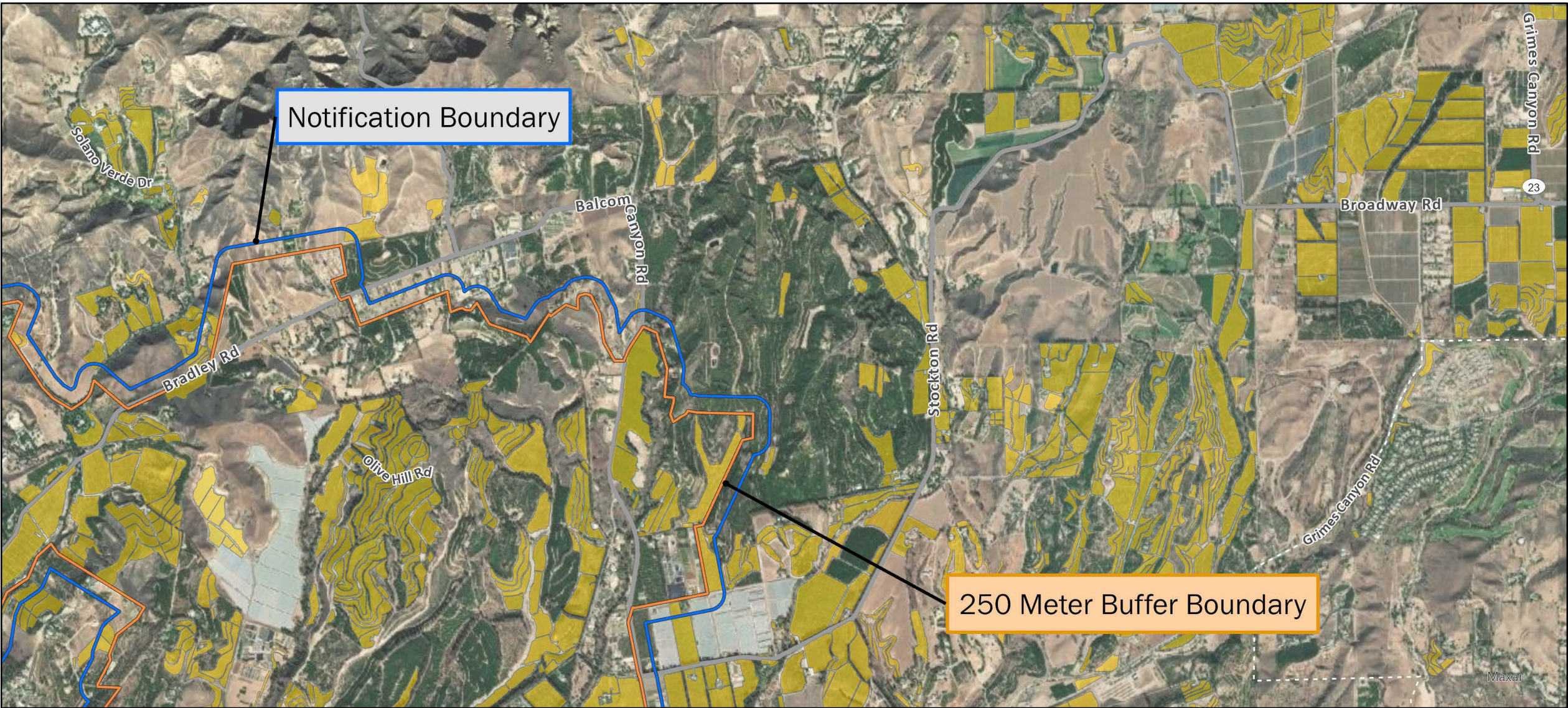
-  250 Meter Buffer Boundary
-  Notification Boundary
-  Commercial Citrus

The 250 meter buffer boundary delineates the maximum geographical extent of the California Department of Food and Agriculture's treatment activities. Treatments will only be conducted on residential, industrial and rights of way properties with citrus and closely related host plants, not on production citrus orchards or nurseries.




  
0 1,000 Meters

  
CITRUS PEST & DISEASE PREVENTION DIVISION  
CALIFORNIA DEPARTMENT OF FOOD & AGRICULTURE





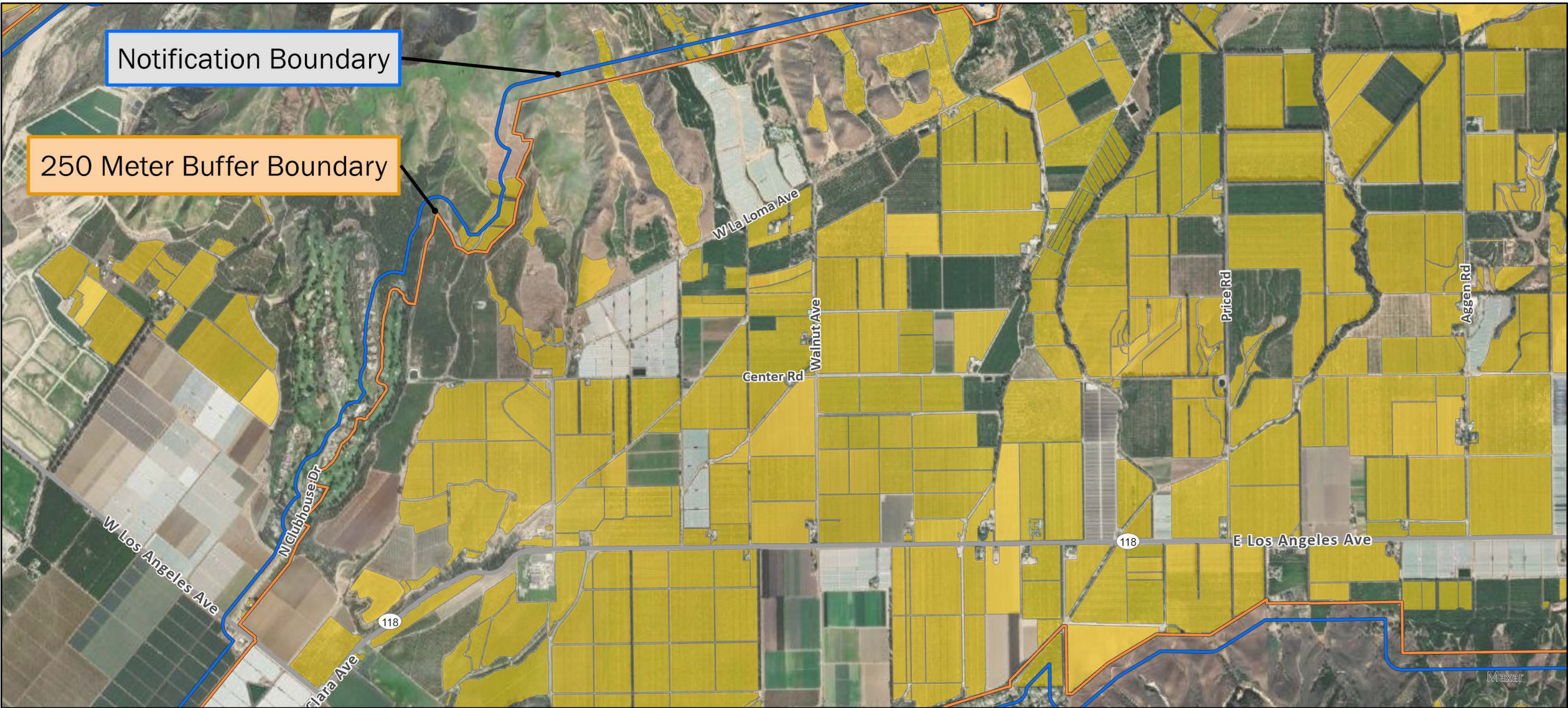
Asian Citrus Psyllid Treatment  
Public Meeting Map (Page 4) - 08/10/2022  
Camarillo  
Ventura County  
Printed 8/2/2022

-  250 Meter Buffer Boundary
-  Notification Boundary
-  Commercial Citrus




The 250 meter buffer boundary delineates the maximum geographical extent of the California Department of Food and Agriculture's treatment activities. Treatments will only be conducted on residential, industrial and rights of way properties with citrus and closely related host plants, not on production citrus orchards or nurseries.







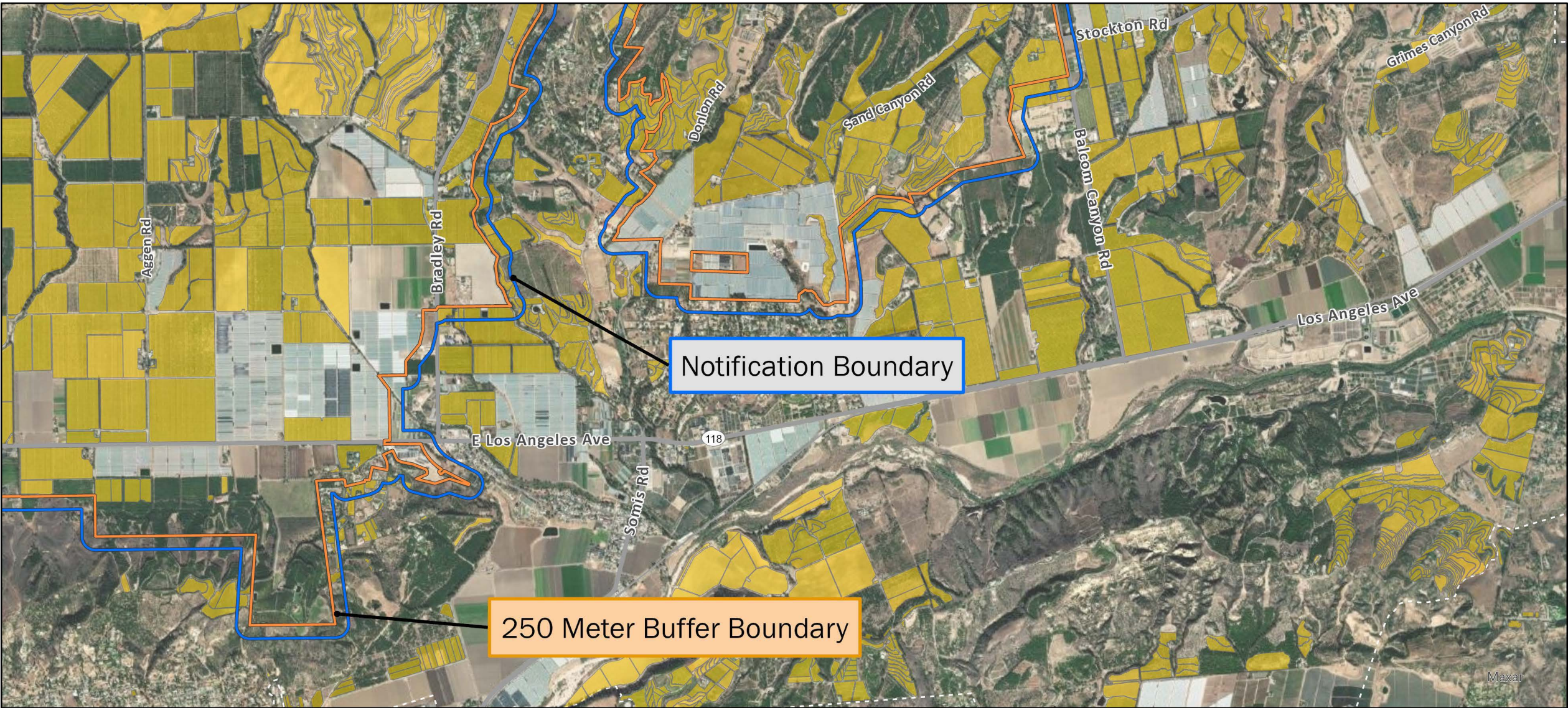
Asian Citrus Psyllid Treatment  
Public Meeting Map (Page 5) - 08/10/2022  
Camarillo  
Ventura County  
Printed 8/2/2022

-  250 Meter Buffer Boundary
-  Notification Boundary
-  Commercial Citrus




The 250 meter buffer boundary delineates the maximum geographical extent of the California Department of Food and Agriculture's treatment activities. Treatments will only be conducted on residential, industrial and rights of way properties with citrus and closely related host plants, not on production citrus orchards or nurseries.







Asian Citrus Psyllid Treatment  
Public Meeting Map (Page 6) - 08/10/2022  
Camarillo  
Ventura County  
Printed 8/2/2022

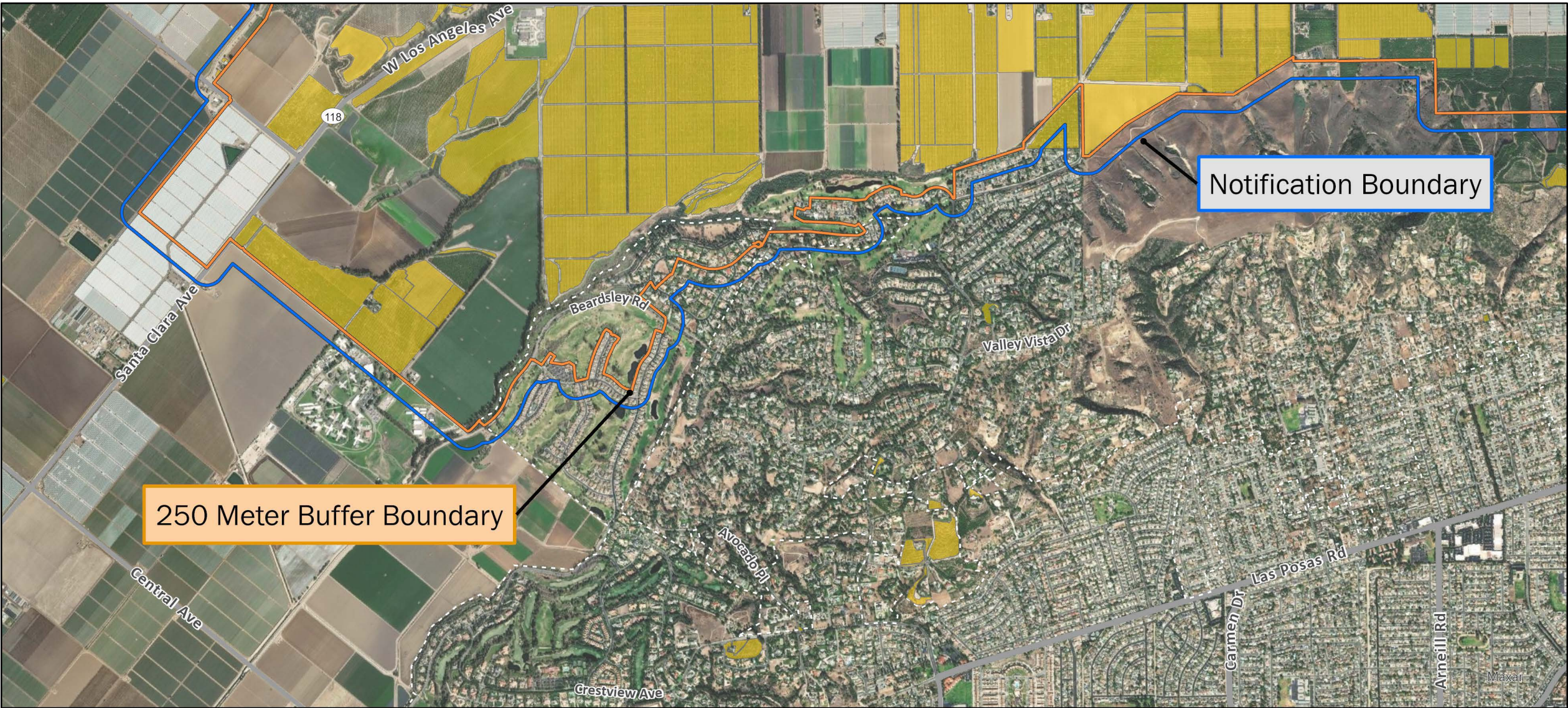
-  250 Meter Buffer Boundary
-  Notification Boundary
-  Commercial Citrus

The 250 meter buffer boundary delineates the maximum geographical extent of the California Department of Food and Agriculture's treatment activities. Treatments will only be conducted on residential, industrial and rights of way properties with citrus and closely related host plants, not on production citrus orchards or nurseries.




0 1,000 Meters







Asian Citrus Psyllid Treatment  
Public Meeting Map (Page 7) - 08/10/2022  
Camarillo  
Ventura County  
Printed 8/2/2022

-  250 Meter Buffer Boundary
-  Notification Boundary
-  Commercial Citrus

The 250 meter buffer boundary delineates the maximum geographical extent of the California Department of Food and Agriculture's treatment activities. Treatments will only be conducted on residential, industrial and rights of way properties with citrus and closely related host plants, not on production citrus orchards or nurseries.



0 1,000 Meters



CITRUS PEST & DISEASE PREVENTION DIVISION

cdfa  
CALIFORNIA DEPARTMENT OF FOOD & AGRICULTURE