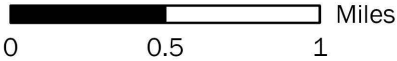


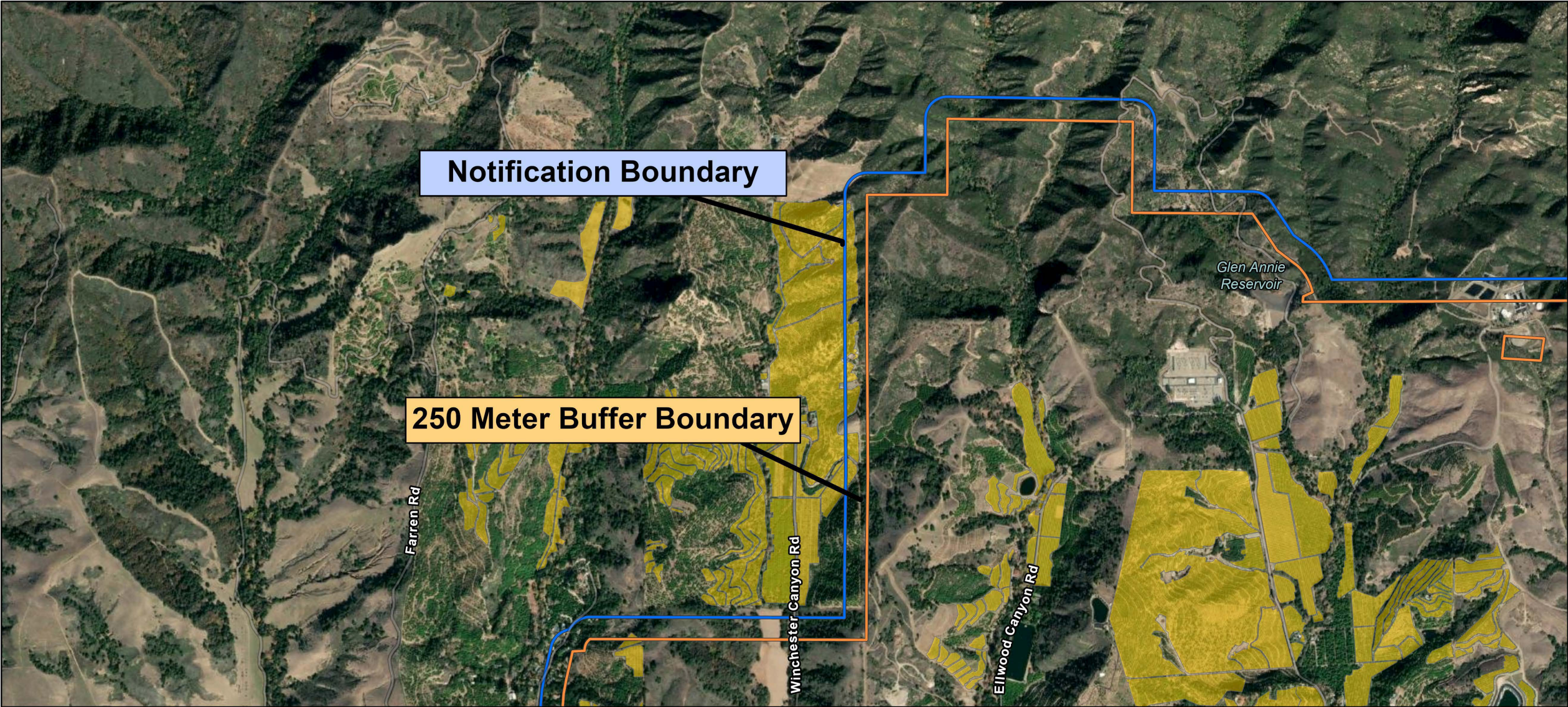
Asian Citrus Psyllid Treatment
Public Meeting Overview Map
Santa Barbara, Goleta
Santa Barbara County
Printed 9/2/2022






- 250 Meter Buffer Boundary
- Notification Boundary
- Commercial Citrus

The 250 meter buffer boundary delineates the maximum geographical extent of the California Department of Food and Agriculture's treatment activities. Treatments will only be conducted on residential, industrial and rights of way properties with citrus and closely related host plants, not on production citrus orchards or nurseries.





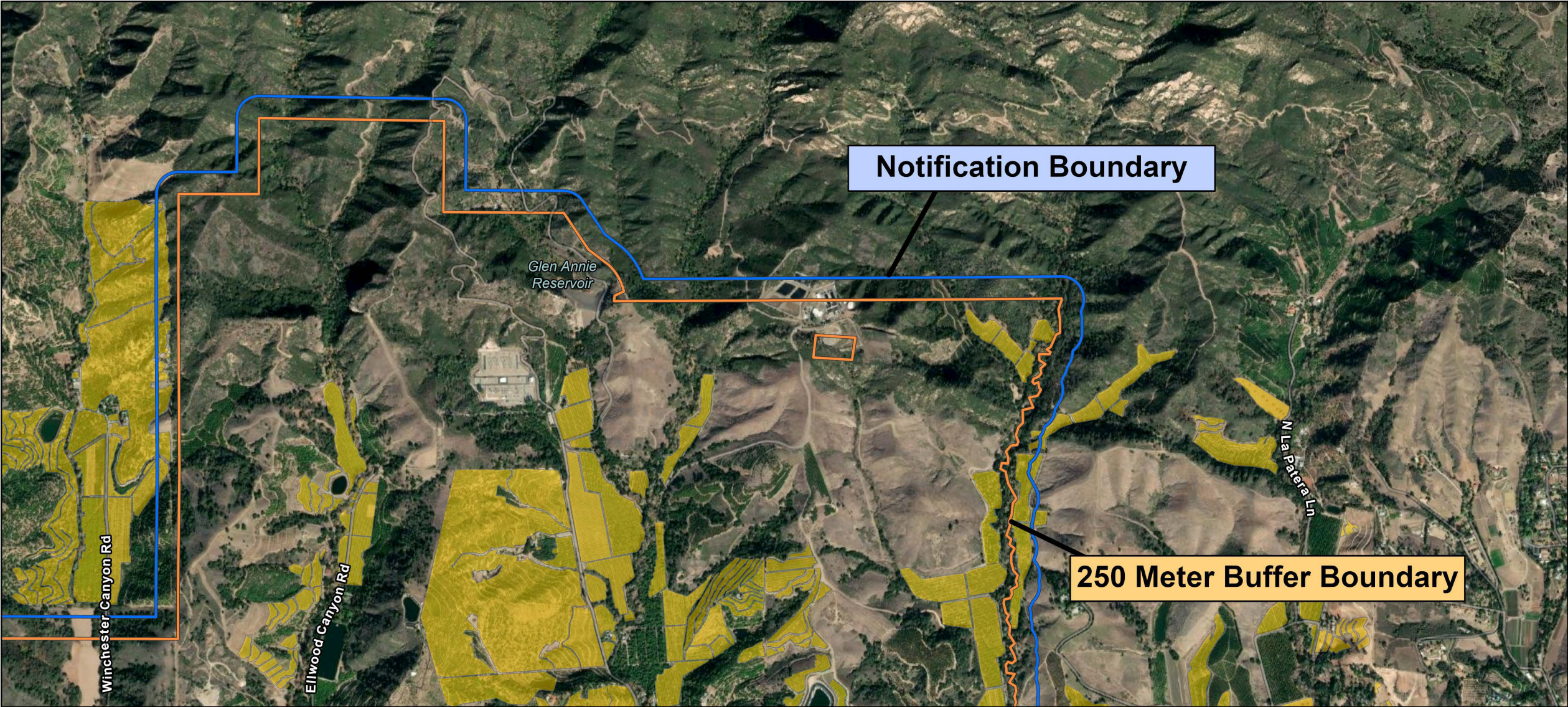
Asian Citrus Psyllid Treatment
Public Meeting Map (Page 1)
Santa Barbara
Santa Barbara County
Printed 9/2/2022

-  250 Meter Buffer Boundary
-  Notification Boundary
-  Commercial Citrus




The 250 meter buffer boundary delineates the maximum geographical extent of the California Department of Food and Agriculture's treatment activities. Treatments will only be conducted on residential, industrial and rights of way properties with citrus and closely related host plants, not on production citrus orchards or nurseries.

0 500 Meters






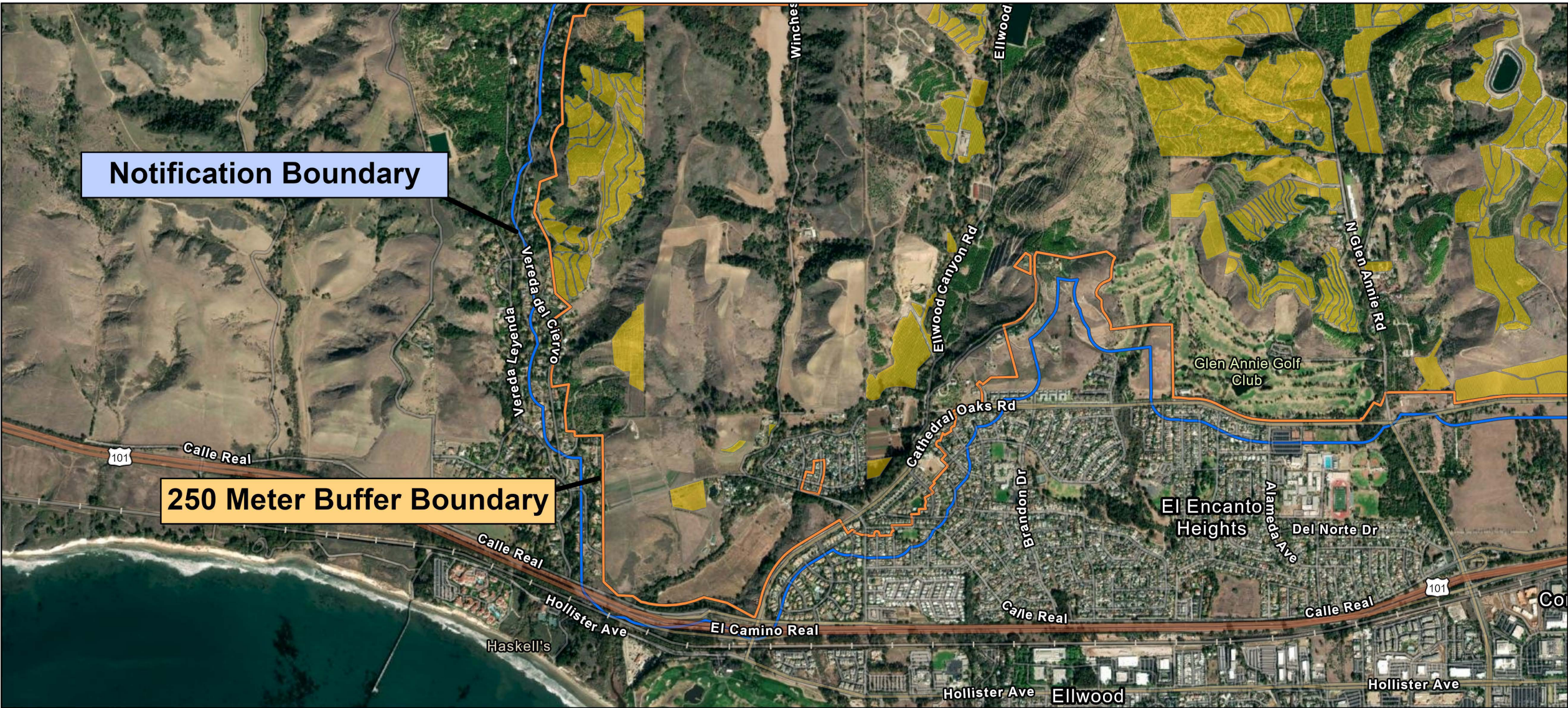
Asian Citrus Psyllid Treatment
Public Meeting Map (Page 2)
Santa Barbara
Santa Barbara County
Printed 9/2/2022

-  250 Meter Buffer Boundary
-  Notification Boundary
-  Commercial Citrus




The 250 meter buffer boundary delineates the maximum geographical extent of the California Department of Food and Agriculture's treatment activities. Treatments will only be conducted on residential, industrial and rights of way properties with citrus and closely related host plants, not on production citrus orchards or nurseries.

 Meters
0 500

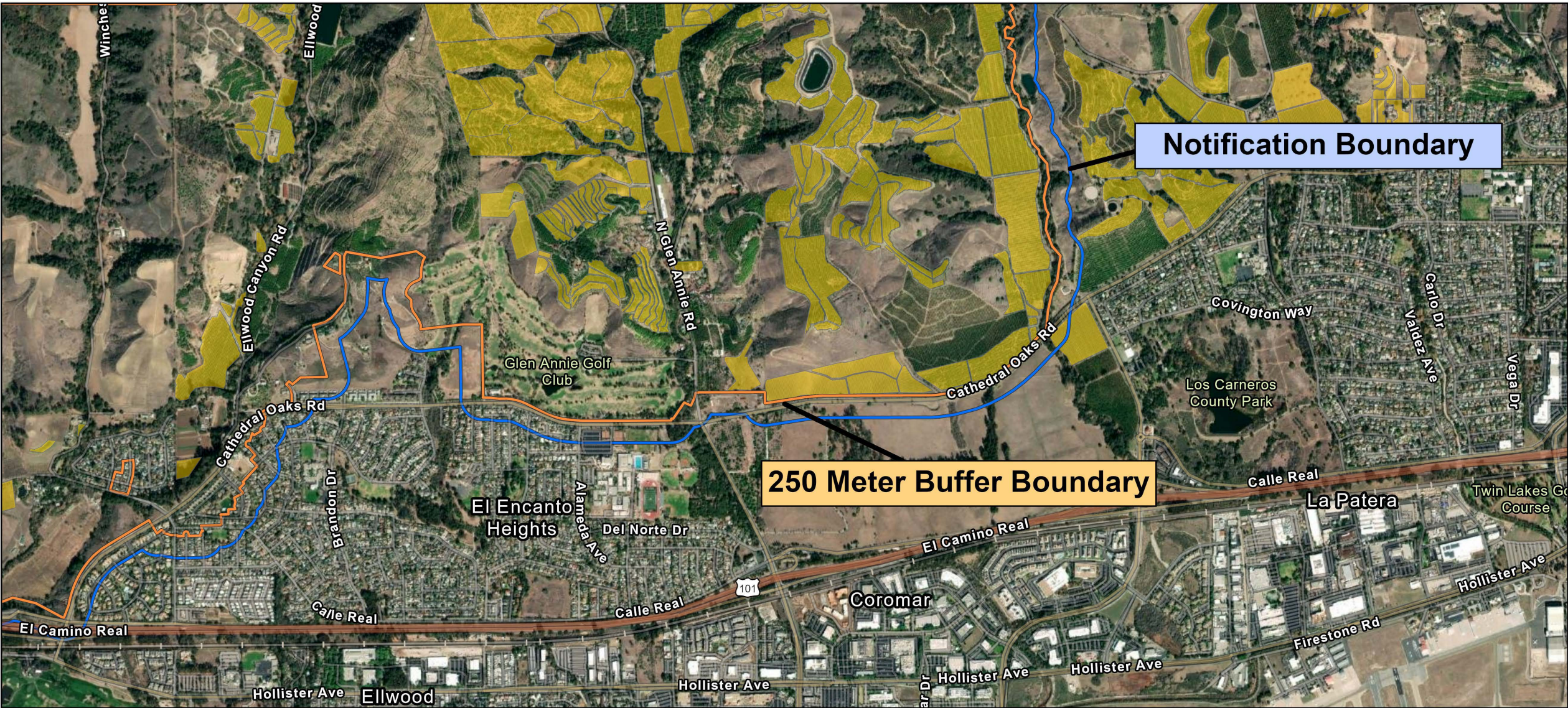







Asian Citrus Psyllid Treatment
Public Meeting Map (Page 3)
Santa Barbara, Goleta
Santa Barbara County
Printed 9/2/2022

-  250 Meter Buffer Boundary
-  Notification Boundary
-  Commercial Citrus

The 250 meter buffer boundary delineates the maximum geographical extent of the California Department of Food and Agriculture's treatment activities. Treatments will only be conducted on residential, industrial and rights of way properties with citrus and closely related host plants, not on production citrus orchards or nurseries.



Asian Citrus Psyllid Treatment
Public Meeting Map (Page 4)
Santa Barbara, Goleta
Santa Barbara County
Printed 9/2/2022

-  250 Meter Buffer Boundary
-  Notification Boundary
-  Commercial Citrus

The 250 meter buffer boundary delineates the maximum geographical extent of the California Department of Food and Agriculture's treatment activities. Treatments will only be conducted on residential, industrial and rights of way properties with citrus and closely related host plants, not on production citrus orchards or nurseries.

0 500 Meters

