

# Información Sobre Reunión Pública

---

Programa de control del Psílido Asiático  
de los Cítricos



Línea de Plagas:  
1800.491.1899



CITRUS PEST & DISEASE  
PREVENTION DIVISION  
CALIFORNIA DEPARTMENT OF FOOD AND AGRICULTURE

# Ciclo de vida del Psílido Asiático de los Cítricos (ACP)

- 10 generaciones por año
- Huevecillos puestos individualmente
- 5 etapas de ninfas
- El ciclo de vida dura 15 a 47 días
- De huevecillo a adulto toma 2 semanas

Etapas de vida



Huevecillos



Ninfas con cera exudada



Adulto



Adulto y ninfas alimentándose

Línea de Plagas:  
1800.491.1899



CITRUS PEST & DISEASE  
PREVENTION DIVISION  
CALIFORNIA DEPARTMENT OF FOOD AND AGRICULTURE

# Huanglongbing (HLB)



Fruta mal formada



Moteado asimétrico de las hojas



Moteado con manchas



Venas amarillas y tapadas

- HLB es una enfermedad bacteriana de los cítricos y especies relacionadas, causada por la bacteria *Candidatus Liberibacter asiaticus*.
- HLB se transmite cuando el ACP se alimenta de los cítricos o por injerto con yemas infectadas. El ACP ingiere la bacteria cuando se alimenta y puede propagarla a otros árboles.
- Síntomas incluyen brotes amarillos, hojas moteadas asimétricas, hojas gruesas o con nervios leñosos, y frutas mal formadas e incomedibles.
- No existe una cura conocida para el HLB. Un árbol infectado con HLB, morirá.
- Si sospecha que tiene plantas cítricas con HLB, por favor comuníquese con el Departamento de Alimentación y Agricultura de California al número 1-800-491-1899.

**Línea de Plagas:**  
**1800.491.1899**



**CITRUS PEST & DISEASE  
PREVENTION DIVISION**  
CALIFORNIA DEPARTMENT OF FOOD AND AGRICULTURE

# Inspección

El personal de CDFA inspeccionará el área por ACP y síntomas de la enfermedad de HLB.



- CDFA inspectores solo recolectarán muestras de hojas si hay síntomas de HLB.
- Las plantas huésped incluyen todas las variedades de cítricos y híbridos (kumquat, mandarina, toronja, naranja, limón y lima) y plantas relacionadas como la hoja de curry y naranja-jasmín ornamental.
- Todas las muestras se envían al Centro de Diagnósticos de Plantas y Plagas de CDFA en Sacramento, California para análisis.
- Si se confirma que una muestra es positiva para ACP o la enfermedad HLB, los residentes serán notificados.

**Línea de Plagas:**  
**1800.491.1899**



**CITRUS PEST & DISEASE  
PREVENTION DIVISION**  
CALIFORNIA DEPARTMENT OF FOOD AND AGRICULTURE

# Tratamiento

- CDFA estará realizando tratamientos a los árboles cítricos para erradicar el ACP.
- El tratamiento será realizado por un aplicador profesional o personal de CDFA.



**Línea de Plagas:  
1800.491.1899**



**CITRUS PEST & DISEASE  
PREVENTION DIVISION**  
CALIFORNIA DEPARTMENT OF FOOD AND AGRICULTURE

# Ingredientes Activos

- El programa de tratamiento para ACP utiliza productos que contienen los ingredientes activos imidacloprid y beta-ciflutrina.
- Imidacloprid es un insecticida sistémico. Está disponible en una variedad de productos para el jardín doméstico y también para tratamientos de pulgas para perros y gatos.
- La beta-ciflutrina es un piretroide de aplicación foliar, similar a un compuesto que se encuentra en flores de crisantemo. Los productos de beta-ciflutrina se usan en hogares, restaurantes, hospitales, plantas de procesamiento de alimentos y jardines.



Tempo SC Ultra  
Producto Beta-Ciflutrina



Merit 2F  
Producto de Imidacloprid



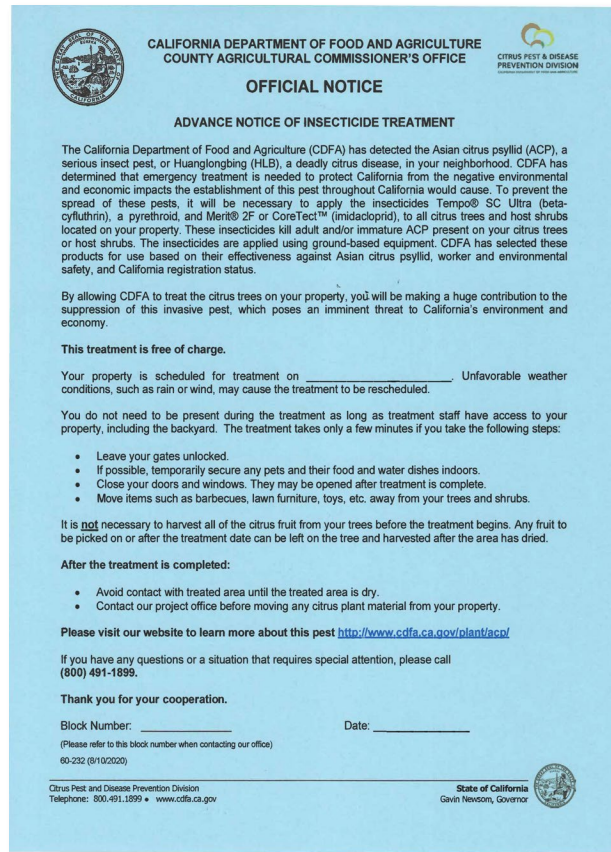
CoreTect  
Producto de Imidacloprid

**Línea de Plagas:**  
**1800.491.1899**



**CITRUS PEST & DISEASE  
PREVENTION DIVISION**  
CALIFORNIA DEPARTMENT OF FOOD AND AGRICULTURE

# Notificaciones



**CALIFORNIA DEPARTMENT OF FOOD AND AGRICULTURE  
COUNTY AGRICULTURAL COMMISSIONER'S OFFICE**

**OFFICIAL NOTICE**

**ADVANCE NOTICE OF INSECTICIDE TREATMENT**

The California Department of Food and Agriculture (CDFA) has detected the Asian citrus psyllid (ACP), a serious insect pest, or Huanglongbing (HLB), a deadly citrus disease, in your neighborhood. CDFA has determined that emergency treatment is needed to protect California from the negative environmental and economic impacts the establishment of this pest throughout California would cause. To prevent the spread of these pests, it will be necessary to apply the insecticides Tempo® SC Ultra (beta-cyfluthrin), a pyrethroid, and Merit® 2F or CoreTect™ (imidacloprid), to all citrus trees and host shrubs located on your property. These insecticides kill adult and/or immature ACP present on your citrus trees or host shrubs. The insecticides are applied using ground-based equipment. CDFA has selected these products for use based on their effectiveness against Asian citrus psyllid, worker and environmental safety, and California registration status.

By allowing CDFA to treat the citrus trees on your property, you will be making a huge contribution to the suppression of this invasive pest, which poses an imminent threat to California's environment and economy.

**This treatment is free of charge.**

Your property is scheduled for treatment on \_\_\_\_\_. Unfavorable weather conditions, such as rain or wind, may cause the treatment to be rescheduled.

You do not need to be present during the treatment as long as treatment staff have access to your property, including the backyard. The treatment takes only a few minutes if you take the following steps:

- Leave your gates unlocked.
- If possible, temporarily secure any pets and their food and water dishes indoors.
- Close your doors and windows. They may be opened after treatment is complete.
- Move items such as barbecues, lawn furniture, toys, etc. away from your trees and shrubs.

It is not necessary to harvest all of the citrus fruit from your trees before the treatment begins. Any fruit to be picked on or after the treatment date can be left on the tree and harvested after the area has dried.

**After the treatment is completed:**

- Avoid contact with treated area until the treated area is dry.
- Contact our project office before moving any citrus plant material from your property.

**Please visit our website to learn more about this pest <http://www.cdffa.ca.gov/plant/acp/>**

If you have any questions or a situation that requires special attention, please call **(800) 491-1899**.

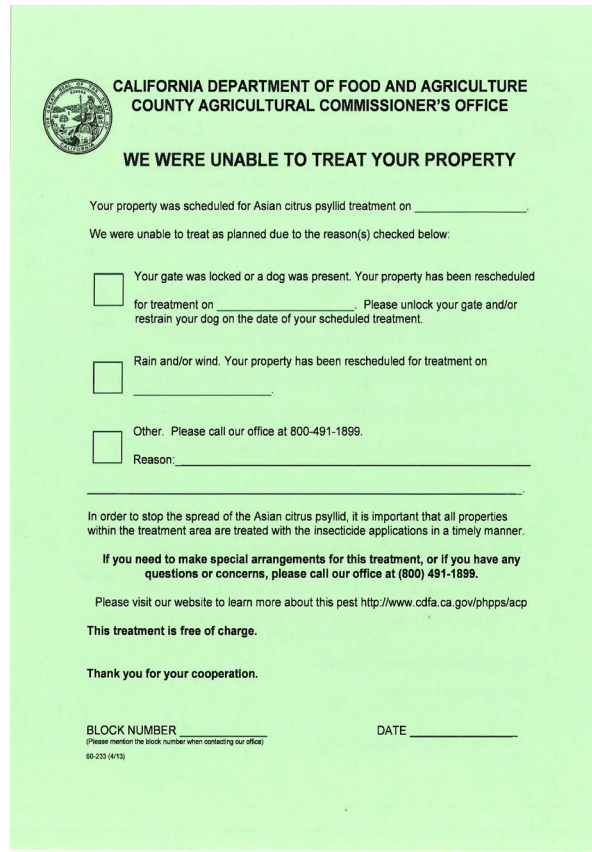
**Thank you for your cooperation.**

Block Number: \_\_\_\_\_ Date: \_\_\_\_\_  
(Please refer to this block number when contacting our office)  
60-232 (6/10/2020)

Citrus Pest and Disease Prevention Division  
Telephone: 800.491.1899 • [www.cdffa.ca.gov](http://www.cdffa.ca.gov)

State of California  
Gavin Newsom, Governor

Aviso de 48-horas



**CALIFORNIA DEPARTMENT OF FOOD AND AGRICULTURE  
COUNTY AGRICULTURAL COMMISSIONER'S OFFICE**

**WE WERE UNABLE TO TREAT YOUR PROPERTY**

Your property was scheduled for Asian citrus psyllid treatment on \_\_\_\_\_.

We were unable to treat as planned due to the reason(s) checked below.

Your gate was locked or a dog was present. Your property has been rescheduled for treatment on \_\_\_\_\_. Please unlock your gate and/or restrain your dog on the date of your scheduled treatment.

Rain and/or wind. Your property has been rescheduled for treatment on \_\_\_\_\_.

Other. Please call our office at 800-491-1899.  
Reason: \_\_\_\_\_

In order to stop the spread of the Asian citrus psyllid, it is important that all properties within the treatment area are treated with the insecticide applications in a timely manner.

**If you need to make special arrangements for this treatment, or if you have any questions or concerns, please call our office at (800) 491-1899.**

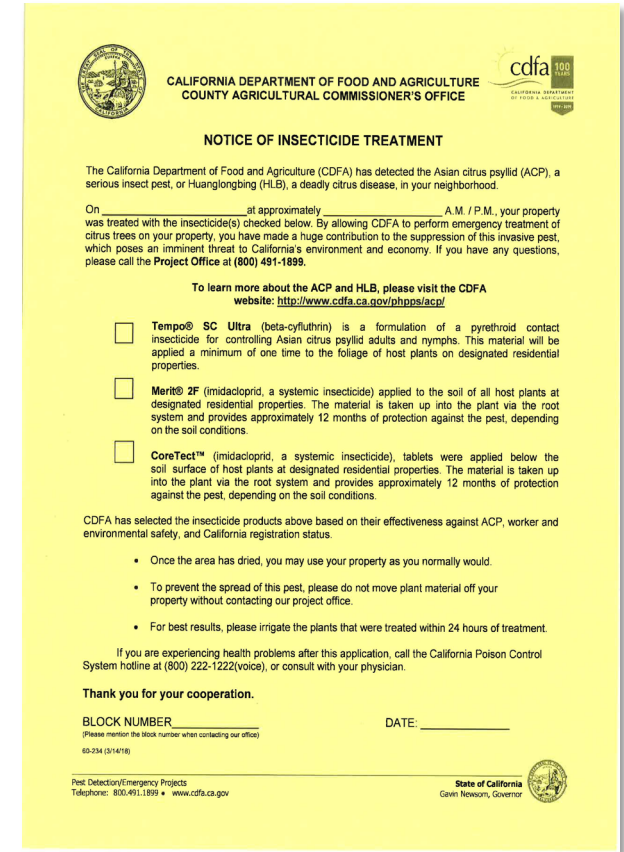
Please visit our website to learn more about this pest <http://www.cdffa.ca.gov/phpps/acp>

**This treatment is free of charge.**

**Thank you for your cooperation.**

BLOCK NUMBER \_\_\_\_\_ DATE \_\_\_\_\_  
(Please mention the block number when contacting our office)  
60-233 (4/13)

Notificación de reprogramación



**CALIFORNIA DEPARTMENT OF FOOD AND AGRICULTURE  
COUNTY AGRICULTURAL COMMISSIONER'S OFFICE**

**NOTICE OF INSECTICIDE TREATMENT**

The California Department of Food and Agriculture (CDFA) has detected the Asian citrus psyllid (ACP), a serious insect pest, or Huanglongbing (HLB), a deadly citrus disease, in your neighborhood.

On \_\_\_\_\_ at approximately \_\_\_\_\_ A.M. / P.M., your property was treated with the insecticide(s) checked below. By allowing CDFA to perform emergency treatment of citrus trees on your property, you have made a huge contribution to the suppression of this invasive pest, which poses an imminent threat to California's environment and economy. If you have any questions, please call the Project Office at **(800) 491-1899**.

**To learn more about the ACP and HLB, please visit the CDFA website: <http://www.cdffa.ca.gov/phpps/acp/>**

**Tempo® SC Ultra** (beta-cyfluthrin) is a formulation of a pyrethroid contact insecticide for controlling Asian citrus psyllid adults and nymphs. This material will be applied a minimum of one time to the foliage of host plants on designated residential properties.

**Merit® 2F** (imidacloprid, a systemic insecticide) applied to the soil of all host plants at designated residential properties. The material is taken up into the plant via the root system and provides approximately 12 months of protection against the pest, depending on the soil conditions.

**CoreTect™** (imidacloprid, a systemic insecticide), tablets were applied below the soil surface of host plants at designated residential properties. The material is taken up into the plant via the root system and provides approximately 12 months of protection against the pest, depending on the soil conditions.

CDFA has selected the insecticide products above based on their effectiveness against ACP, worker and environmental safety, and California registration status.

- Once the area has dried, you may use your property as you normally would.
- To prevent the spread of this pest, please do not move plant material off your property without contacting our project office.
- For best results, please irrigate the plants that were treated within 24 hours of treatment.

If you are experiencing health problems after this application, call the California Poison Control System hotline at **(800) 222-1222**(voice), or consult with your physician.

**Thank you for your cooperation.**

BLOCK NUMBER \_\_\_\_\_ DATE: \_\_\_\_\_  
(Please mention the block number when contacting our office)  
60-234 (3/14/18)

Pest Detection/Emergency Projects  
Telephone: 800.491.1899 • [www.cdffa.ca.gov](http://www.cdffa.ca.gov)

State of California  
Gavin Newsom, Governor

Notificación posterior de  
tratamiento

Línea de Plagas:  
**1800.491.1899**

# Removimiento de Árboles Infectados

- No hay cura para el HLB; una vez que un árbol está infectado no hay cura y se morirá.
- Si se encuentra un árbol positivo por HLB, el árbol será removido para prevenir la propagación de la enfermedad a otros árboles sanos.



**Línea de Plagas:  
1800.491.1899**



**CITRUS PEST & DISEASE  
PREVENTION DIVISION**  
CALIFORNIA DEPARTMENT OF FOOD AND AGRICULTURE



# Cuarentena

- Cuarentenas de ACP y HLB ayudan a prevenir la propagación de plagas de cítricos y protegen los cítricos de California.
- Fruta de cosecha propia para el consumo personal (menos de 25 libras) sin tallos y hojas pueden ser movidas dentro de la cuarentena.
- No se aconseja compartir fruta.



- Solo compre cítricos de viveros de buena reputación dentro de su zona de cuarentena de ACP.
- Comuníquese con el CDFA antes de mover plantas cítricas o fruta de su zona de cuarentena.

 CALIFORNIA DEPARTMENT OF FOOD AND AGRICULTURE For official use only.	This plant shall <u>not be moved</u> out of the Asian Citrus Psyllid Nursery Regional Quarantine Zone 2. <a href="http://www.cdfa.ca.gov/plant/acp/regulation.html">http://www.cdfa.ca.gov/plant/acp/regulation.html</a>	1 2 3 4 5
 CALIFORNIA DEPARTMENT OF FOOD AND AGRICULTURE For official use only.	This plant shall <u>not be moved</u> out of the Asian Citrus Psyllid Nursery Regional Quarantine Zone 3. <a href="http://www.cdfa.ca.gov/plant/acp/regulation.html">http://www.cdfa.ca.gov/plant/acp/regulation.html</a>	1 2 3 4 5
 CALIFORNIA DEPARTMENT OF FOOD AND AGRICULTURE For official use only.	This plant shall <u>not be moved</u> out of the area Quarantined for Huanglongbing disease. <a href="http://www.cdfa.ca.gov/plant/hlb/regulation.html">http://www.cdfa.ca.gov/plant/hlb/regulation.html</a>	1 2 3 4 5

Para mas información sobre la cuarentena:  
[www.cdfa.ca.gov/citrus/pests\\_diseases/acp/regulation](http://www.cdfa.ca.gov/citrus/pests_diseases/acp/regulation)

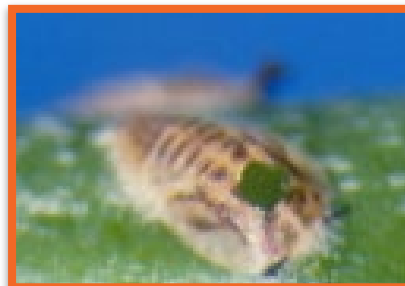
Línea de Plagas:  
1800.491.1899



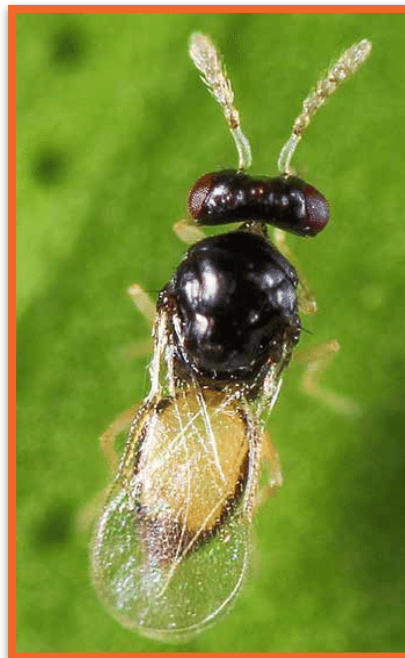
CITRUS PEST & DISEASE  
PREVENTION DIVISION  
CALIFORNIA DEPARTMENT OF FOOD AND AGRICULTURE

# Control Biológico

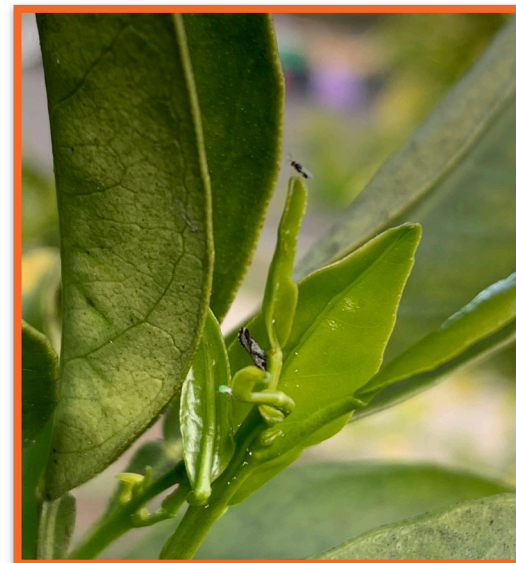
- *Tamarixia radiata* es un insecto de control biológico ideal y enemigo natural de ACP.
- Este método por sí no solo es suficiente para detener la propagación de ACP.
- Los lanzamientos estratégicos, junto con aplicaciones de tratamiento, ayudan a reducir poblaciones de ACP.
- *Tamarixia* no son una amenaza para humanos o mascotas.



Ninfa que fue parasitada



*Tamarixia radiata*



*Tamarixia* y ACP



*Tamarixia* poniendo huevillos en una ninfa de ACP

**Línea de Plagas:**  
**1800.491.1899**



**CITRUS PEST & DISEASE  
PREVENTION DIVISION**  
CALIFORNIA DEPARTMENT OF FOOD AND AGRICULTURE

# Protegiendo a los Polinizadores

- La protección de las abejas nativas y los enjambres controlados son esenciales para mantener nuestro suministro de comida y medio ambiente.
- El personal de CDFA activamente busca abejas forrajeras y toma precauciones para prevenir la difusión de pesticidas.
- El programa sigue todas las etiquetas e instrucciones de pesticidas para la seguridad de las abejas.
- **CDFA no realizará tratamientos si hay abejas forrajeras.**



Mas información: [www.cdfa.ca.gov/plant/pollinators](http://www.cdfa.ca.gov/plant/pollinators)

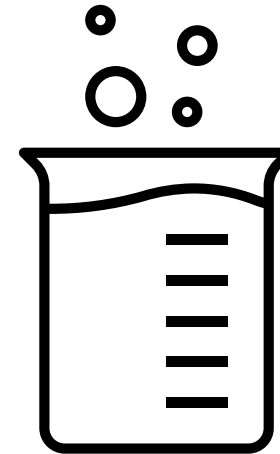
Línea de Plagas:  
1800.491.1899



CITRUS PEST & DISEASE  
PREVENTION DIVISION  
CALIFORNIA DEPARTMENT OF FOOD AND AGRICULTURE

# Consulta y Monitoreo Ambiental

- Se realizan consultas con otras agencias del gobierno estatal y federal antes de iniciar cualquier actividad.
- El monitoreo ambiental se lleva a cabo cuando las actividades se trasladan a nuevos condados.
  - Muestras de aire, tierra, y hojas son colectadas y analizadas antes y después de las aplicaciones.



**Línea de Plagas:**  
**1800.491.1899**



**CITRUS PEST & DISEASE  
PREVENTION DIVISION**  
CALIFORNIA DEPARTMENT OF FOOD AND AGRICULTURE

<https://californiacitrusthreat.org>



Citrus Pest & Disease Prevention Program

PEST & DISEASE PROTECT YOUR CITRUS CALIFORNIA CITRUS NEWS RESOURCES CONTACT



## A Threat to California Citrus

A plant disease that kills citrus trees has been found in California. The disease, called Huanglongbing or citrus greening disease, isn't harmful to humans, but it is fatal for citrus trees and has no cure. The disease is spread by a pest called the Asian citrus psyllid as it feeds on citrus tree leaves. Until researchers find a solution, California homeowners who enjoy growing fresh citrus fruit in their yards, and



Citrus Pest & Disease Prevention Program

PEST & DISEASE PROTECT YOUR CITRUS CALIFORNIA CITRUS NEWS RESOURCES

## Public Meetings

In addition to being available on [CDFA's website](https://www.cdфа.gov), presentations for recent public meetings are available on [CaliforniaCitrusThreat.org](https://californiacitrusthreat.org). Presentations include information on the pest and disease, upcoming agricultural officials in specific communities and regulations in place to limit the spread of the pest.

Learn More



Línea de Plagas:  
1800.491.1899



CITRUS PEST & DISEASE  
PREVENTION DIVISION  
CALIFORNIA DEPARTMENT OF FOOD AND AGRICULTURE

<http://ipm.ucanr.edu/>

UNIVERSITY OF CALIFORNIA AGRICULTURE & NATURAL RESOURCES

# UC IPM

Statewide Integrated Pest Management Program

What is IPM? Identify & Manage Pests Research Publications Training & Events Links About Us Contact Us Subscribe

*Solve your pest problems with UC's best science*

**What's New**

- Green Bulletin: [Fall 2021](#)
- Retail Nursery & Garden Center IPM Newsletter: [Summer 2021](#)
- Ag Pest Management: [Floriculture and Ornamental Nurseries](#) was revised
- Pest Notes: [Poison Oak](#), [Giant Whitefly](#) and [Bats](#) revised, [Wild Turkeys](#), [Pokeweed](#) added
- Agriculture: New online course on [Managing ground squirrels and pocket gophers](#) now available.
- [More...](#)

**MAKE A GIFT** | Support UC IPM's mission to make integrated pest management the way to manage pests

### Home, Garden, Turf & Landscape Pests



### Agricultural Pests




### Natural Environment Pests



### Exotic & Invasive Pests



“HLB” o “ACP”



Línea de Plagas:  
1800.491.1899

# <https://www.cdffa.ca.gov/citrus/>

CDFA Home | Citrus Pest and Disease Prevention Division

## Citrus Pest and Disease Prevention Division

1220 "N" Street, Sacramento, CA 95814 • 916-274-6300 • [cdffa.cpdpp@cdffa.ca.gov](mailto:cdffa.cpdpp@cdffa.ca.gov)

**▲ Pest Hotline: 1-800-491-1899**

The California Department of Food and Agriculture (CDFA) established the Citrus Pest and Disease Prevention Program (CPDPP) in 2009 to sustain and protect California citrus in accordance with the Food and Agriculture Code, section 5911-5940. In response to increasing pest and disease pressure, the Citrus Pest and Disease Prevention Committee recommended that CDFA seek dedicated resources to implement the CPDPP. Dedicated resources were secured in the 2019 Budget Act and the Citrus Pest and Disease Prevention Division (CPDPP) was established in July 2019. CPDPP activities previously carried out by the CDFA Plant Health and Pest Prevention Services Division have been transitioned

### Report a Pest

**HOTLINE: 1-800-491-1899**

[How to Report a Pest](#)





### Sign Up for Updates

[ACP/HLB Updates Email Notification](#)

[Subscribe to Citrus Industry Email Updates](#)

## Hot Topics

- ▶ [What to Expect when CDFA is Inspecting, Trapping and Treating](#)
- ▶ [Health Questions and Answers - CoreTect®](#)
- ▶ [Health Questions and Answers - Merit® 2F](#)
- ▶ [Health Questions and Answers - Tempo® SC Ultra](#)
- ▶ [Analyses regarding the state of ACP and HLB in California](#)

-  [Pests and Diseases](#)
-  [Quarantines](#)
-  [Regulatory Information](#)
-  [Treatment](#)

**Línea de Plagas:  
1800.491.1899**

# ¡Gracias por atender!

- <https://californiacitrusthreat.org>
- <http://ipm.ucanr.edu/>
- <https://www.cdfa.ca.gov/citrus/>
- <https://www.cdfa.ca.gov/plant/reportapest/>

**Línea de Plagas:**  
**1800.491.1899**



**CITRUS PEST & DISEASE  
PREVENTION DIVISION**  
CALIFORNIA DEPARTMENT OF FOOD AND AGRICULTURE