

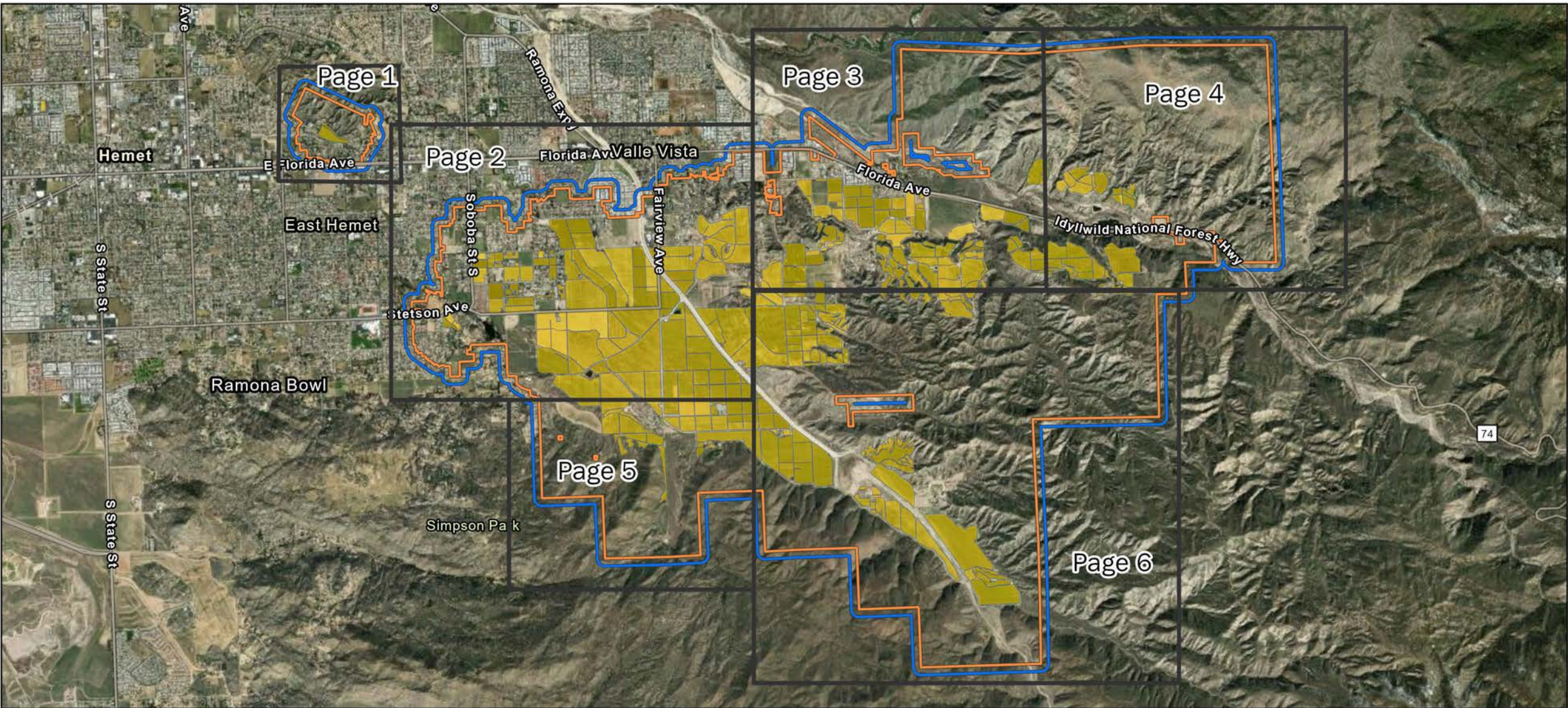


Hemet Area Maps




Asian Citrus Psyllid Control Program




CDFA REPORT A PEST HOTLINE: 1.800.491.1899
www.cdfa.ca.gov/go/reportapest



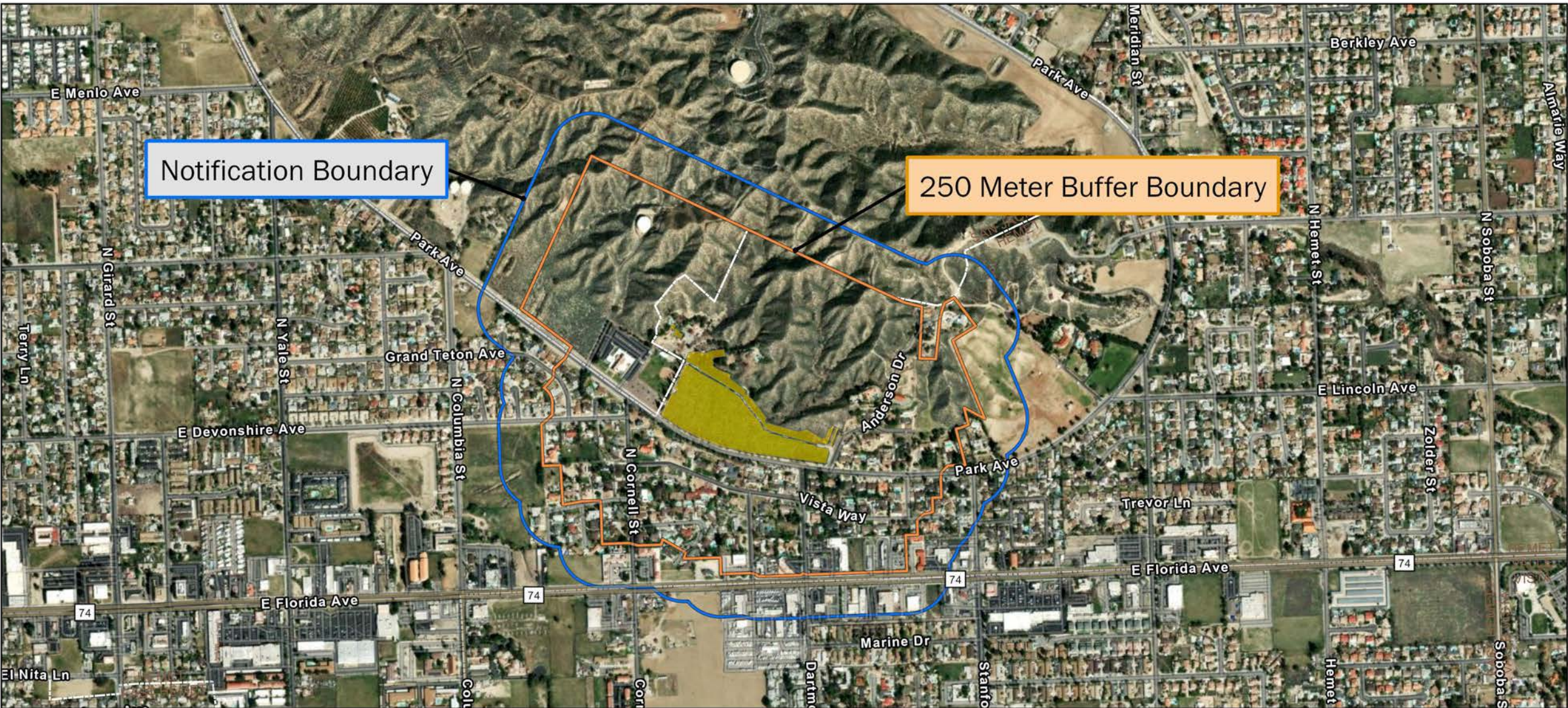
Asian Citrus Psyllid Treatment
Public Meeting Overview Map - 1/10/2023
Hemet
Riverside County
Printed 1/4/2023

-  250 Meter Buffer Boundary
-  Notification Boundary
-  Commercial Citrus




The 250 meter buffer boundary delineates the maximum geographical extent of the California Department of Food and Agriculture's treatment activities. Treatments will only be conducted on residential, industrial and rights of way properties with citrus and closely related host plants, not on production citrus orchards or nurseries.

 Meters
0 1,000



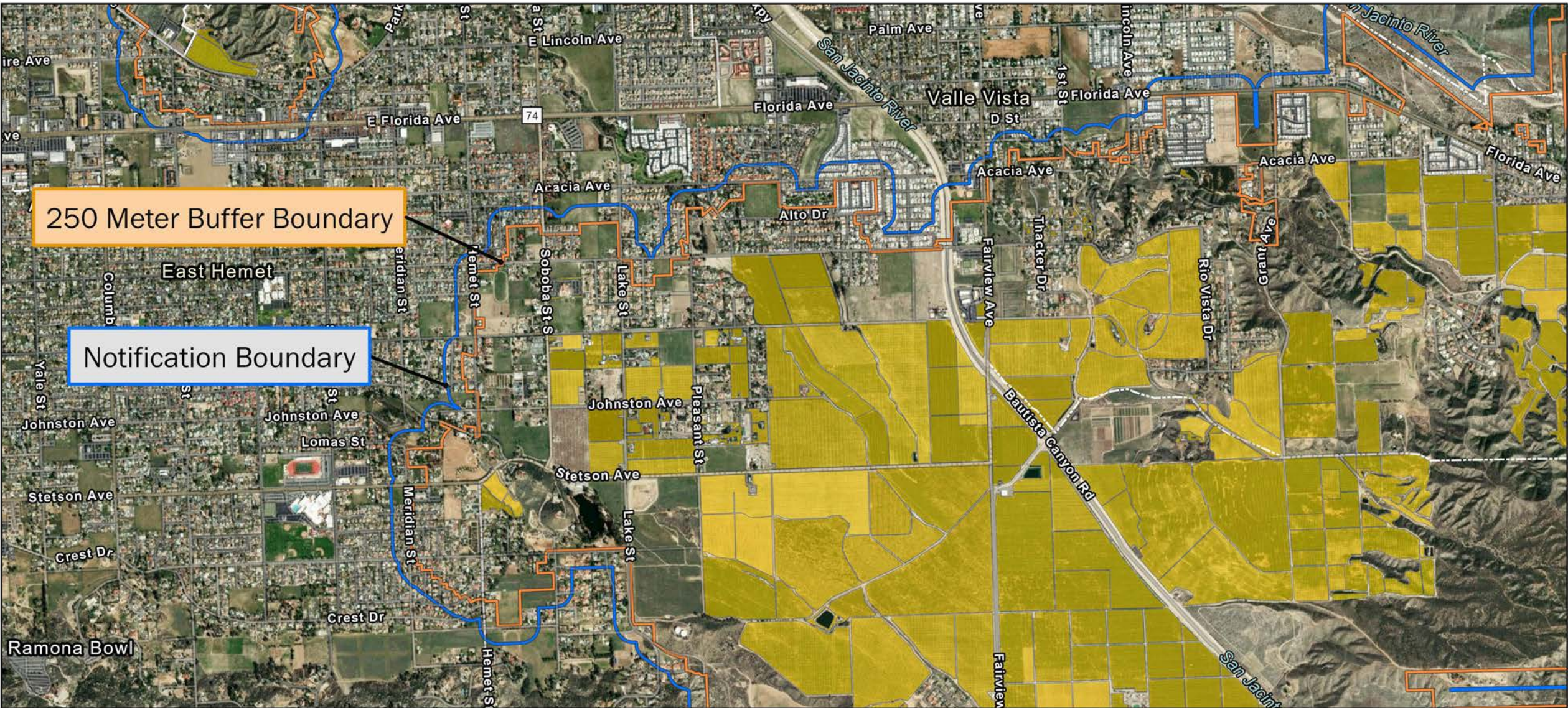


Asian Citrus Psyllid Treatment
Public Meeting Map (Page 1) - 1/10/2023
East Hemet, Hemet, San Jacinto
Riverside County
Printed 1/4/2023




-  250 Meter Buffer Boundary
-  Notification Boundary
-  Commercial Citrus

The 250 meter buffer boundary delineates the maximum geographical extent of the California Department of Food and Agriculture's treatment activities. Treatments will only be conducted on residential, industrial and rights of way properties with citrus and closely related host plants, not on production citrus orchards or nurseries.







Asian Citrus Psyllid Treatment
Public Meeting Map (Page 2) - 1/10/2023
East Hemet, Hemet, Valle Vista
Riverside County
Printed 1/4/2023

-  250 Meter Buffer Boundary
-  Notification Boundary
-  Commercial Citrus


The 250 meter buffer boundary delineates the maximum geographical extent of the California Department of Food and Agriculture's treatment activities. Treatments will only be conducted on residential, industrial and rights of way properties with citrus and closely related host plants, not on production citrus orchards or nurseries.



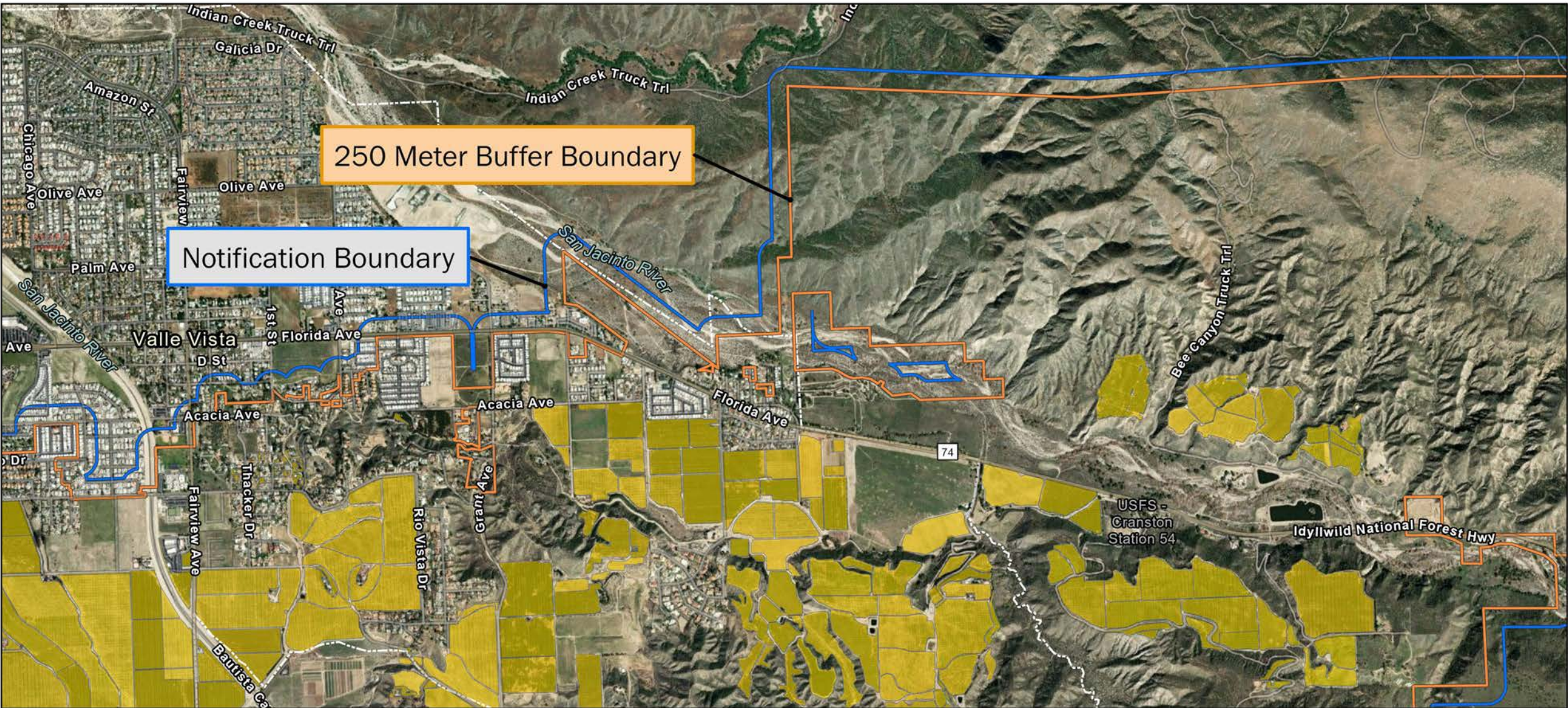
0 700 Meters






CITRUS PEST & DISEASE PREVENTION DIVISION




cdfa
CALIFORNIA DEPARTMENT OF FOOD & AGRICULTURE





Asian Citrus Psyllid Treatment
Public Meeting Map (Page 3) - 1/10/2023
Valle Vista
Riverside County
Printed 1/4/2023

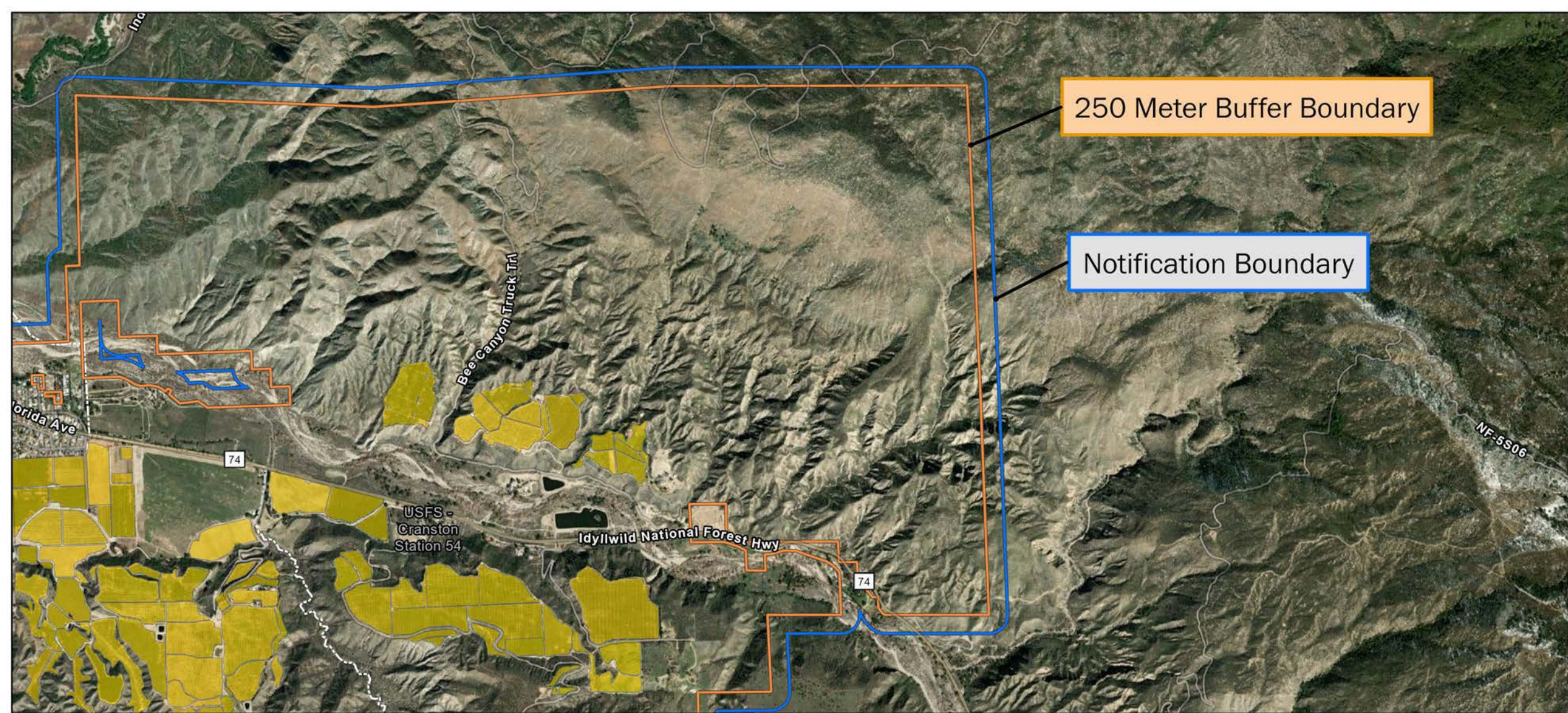
-  250 Meter Buffer Boundary
-  Notification Boundary
-  Commercial Citrus

The 250 meter buffer boundary delineates the maximum geographical extent of the California Department of Food and Agriculture's treatment activities. Treatments will only be conducted on residential, industrial and rights of way properties with citrus and closely related host plants, not on production citrus orchards or nurseries.


0 700 Meters


CITRUS PEST & DISEASE
PREVENTION DIVISION





cdfa
CALIFORNIA DEPARTMENT OF
FOOD & AGRICULTURE




250 Meter Buffer Boundary

Notification Boundary



Asian Citrus Psyllid Treatment
Public Meeting Map (Page 4) - 1/10/2023
Valle Vista
Riverside County
Printed 1/4/2023

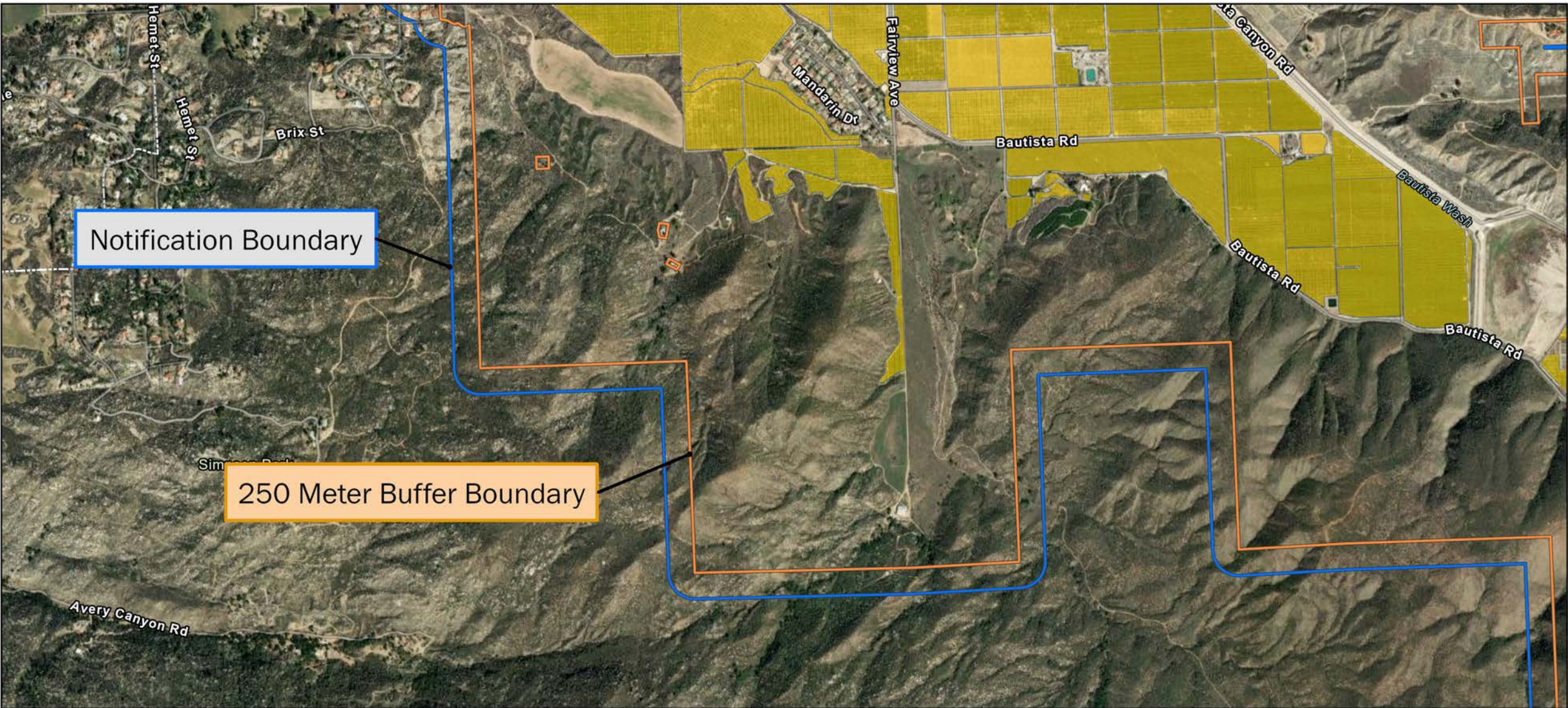
-  250 Meter Buffer Boundary
-  Notification Boundary
-  Commercial Citrus

The 250 meter buffer boundary delineates the maximum geographical extent of the California Department of Food and Agriculture's treatment activities. Treatments will only be conducted on residential, industrial and rights of way properties with citrus and closely related host plants, not on production citrus orchards or nurseries.






Meters
0 700








Asian Citrus Psyllid Treatment
Public Meeting Map (Page 5) - 1/10/2023
East Hemet
Riverside County
Printed 1/4/2023

-  250 Meter Buffer Boundary
-  Notification Boundary
-  Commercial Citrus


The 250 meter buffer boundary delineates the maximum geographical extent of the California Department of Food and Agriculture's treatment activities. Treatments will only be conducted on residential, industrial and rights of way properties with citrus and closely related host plants, not on production citrus orchards or nurseries.



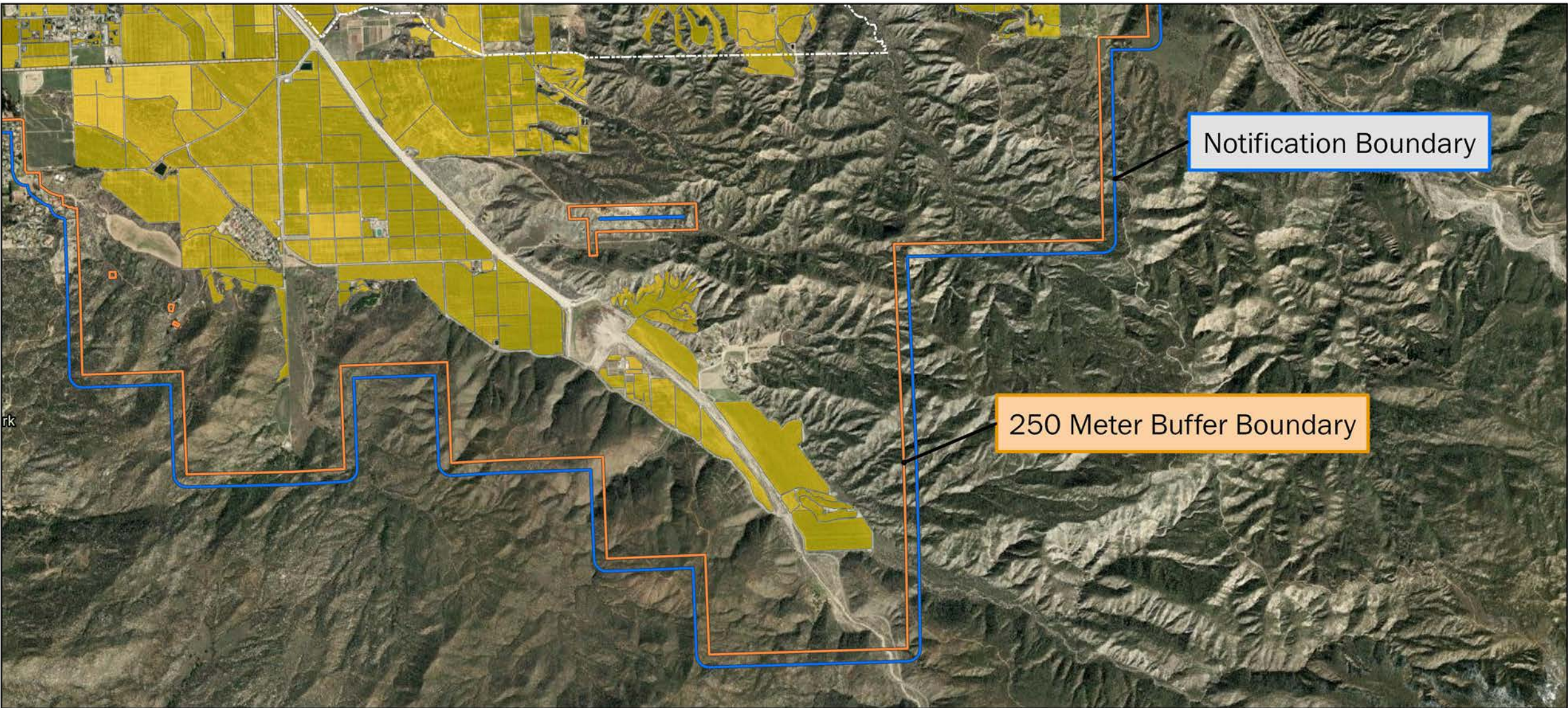
0 500 Meters






CITRUS PEST & DISEASE PREVENTION DIVISION




cdfa
CALIFORNIA DEPARTMENT OF FOOD & AGRICULTURE





Asian Citrus Psyllid Treatment
Public Meeting Map (Page 6) - 1/10/2023
Valle Vista
Riverside County
Printed 1/4/2023

-  250 Meter Buffer Boundary
-  Notification Boundary
-  Commercial Citrus

The 250 meter buffer boundary delineates the maximum geographical extent of the California Department of Food and Agriculture's treatment activities. Treatments will only be conducted on residential, industrial and rights of way properties with citrus and closely related host plants, not on production citrus orchards or nurseries.



0 1,000 Meters



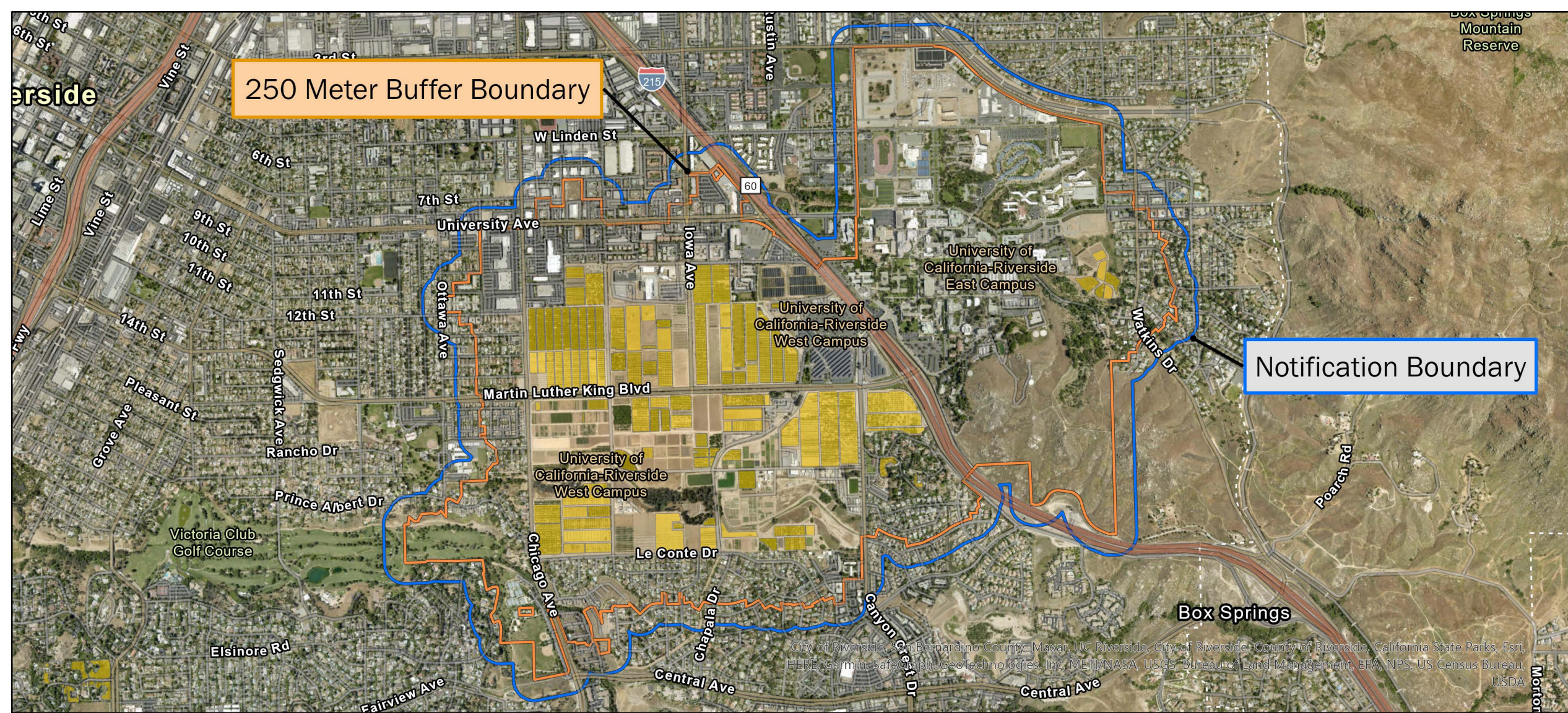


UC Riverside Area Maps




Asian Citrus Psyllid Control Program



CDFA REPORT A PEST HOTLINE: 1.800.491.1899
www.cdfa.ca.gov/go/reportapest



Asian Citrus Psyllid Treatment
Public Meeting Map - 1/10/2023
Riverside
Riverside County
Printed 12/21/2022

-  250 Meter Buffer Boundary
-  Notification Boundary
-  Commercial Citrus

The 250 meter buffer boundary delineates the maximum geographical extent of the California Department of Food and Agriculture's treatment activities. Treatments will only be conducted on residential, industrial and rights of way properties with citrus and closely related host plants, not on production citrus orchards or nurseries.

0 500 Meters



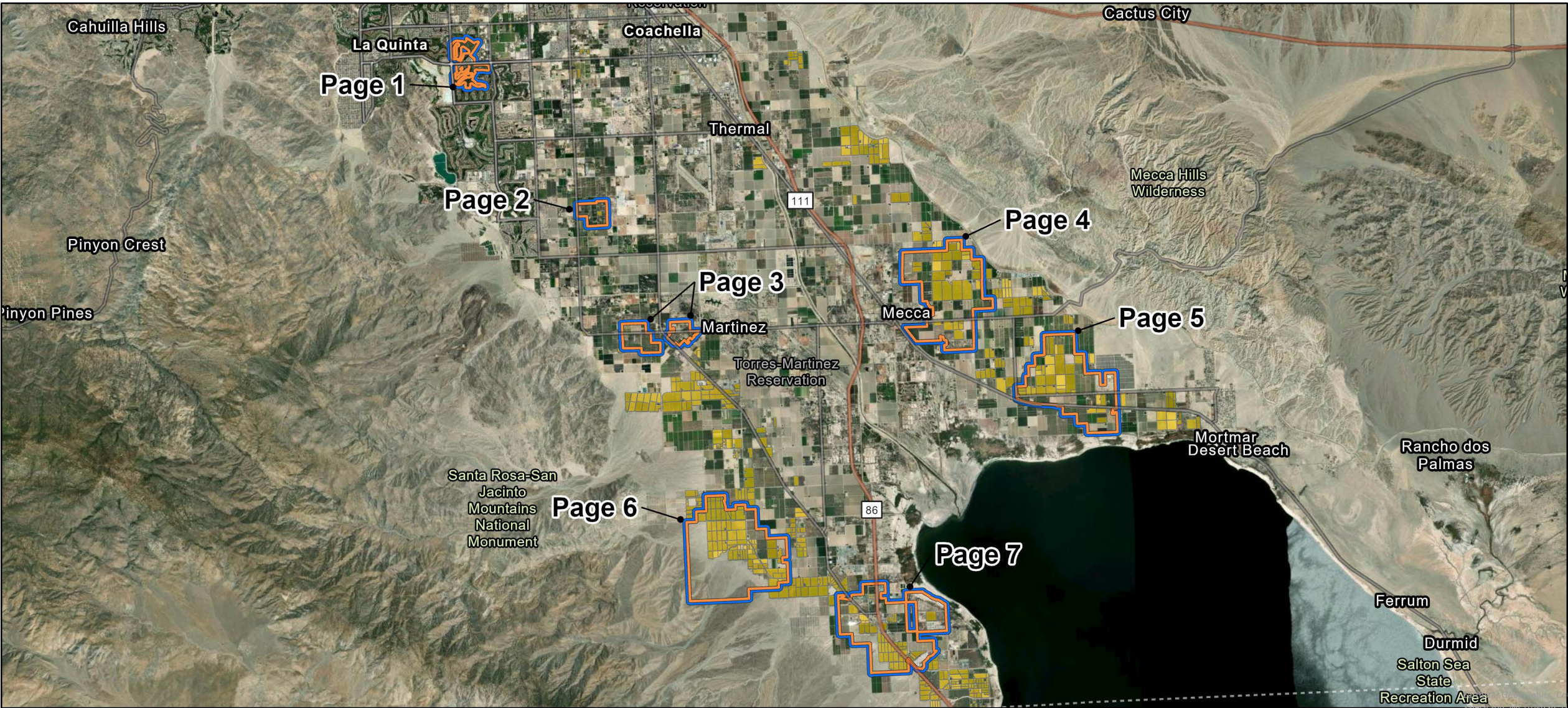


Coachella Valley Area Maps




Asian Citrus Psyllid Control Program




CDFA REPORT A PEST HOTLINE: 1.800.491.1899
www.cdfa.ca.gov/go/reportapest





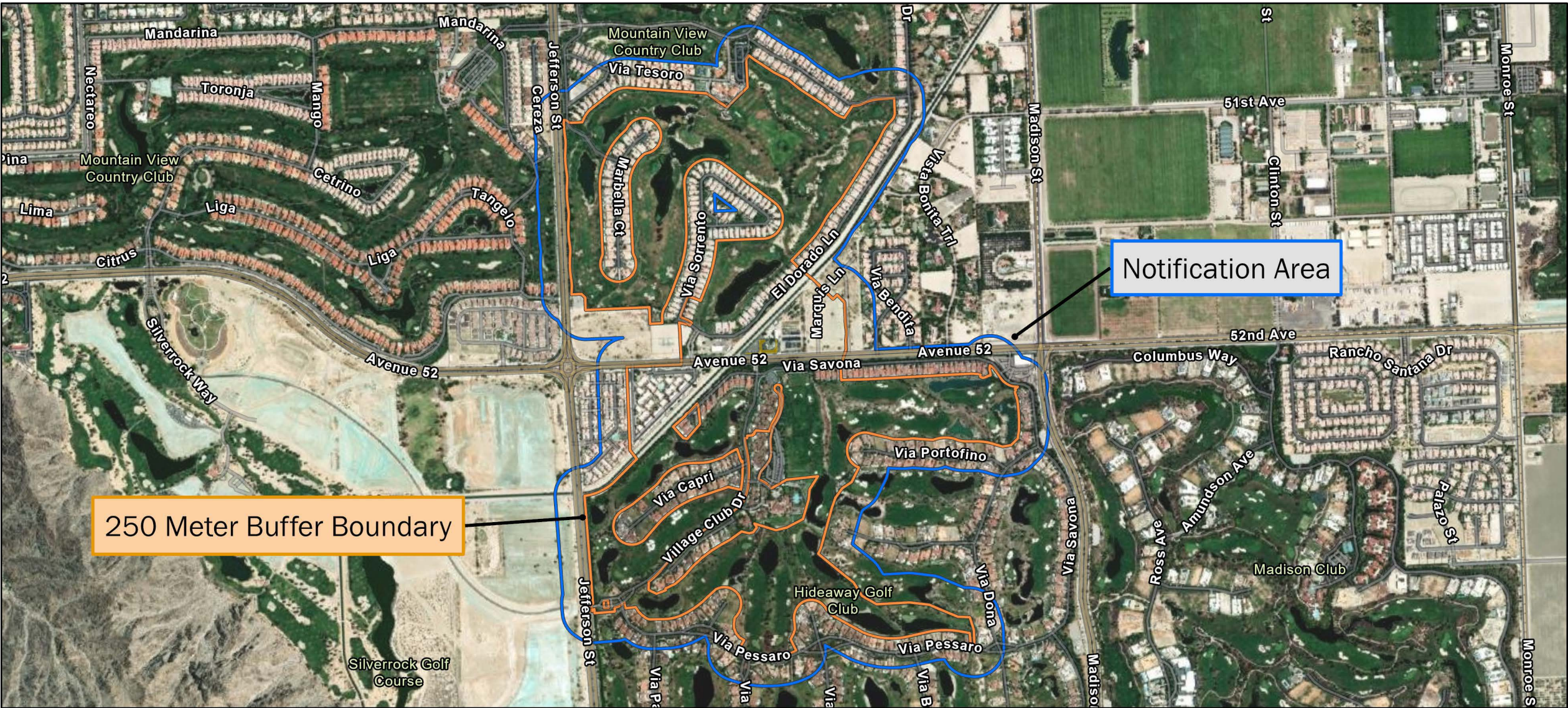
Asian Citrus Psyllid Treatment
Public Meeting Overview Map - 01/10/2023
Coachella Valley
Riverside County
Printed 12/16/2022

-  250 Meter Buffer Boundary
-  Notification Boundary
-  Commercial Citrus




The 250 meter buffer boundary delineates the maximum geographical extent of the California Department of Food and Agriculture's treatment activities. Treatments will only be conducted on residential, industrial and rights of way properties with citrus and closely related host plants, not on production citrus orchards or nurseries.


0 1 2 3 4 Kilometers

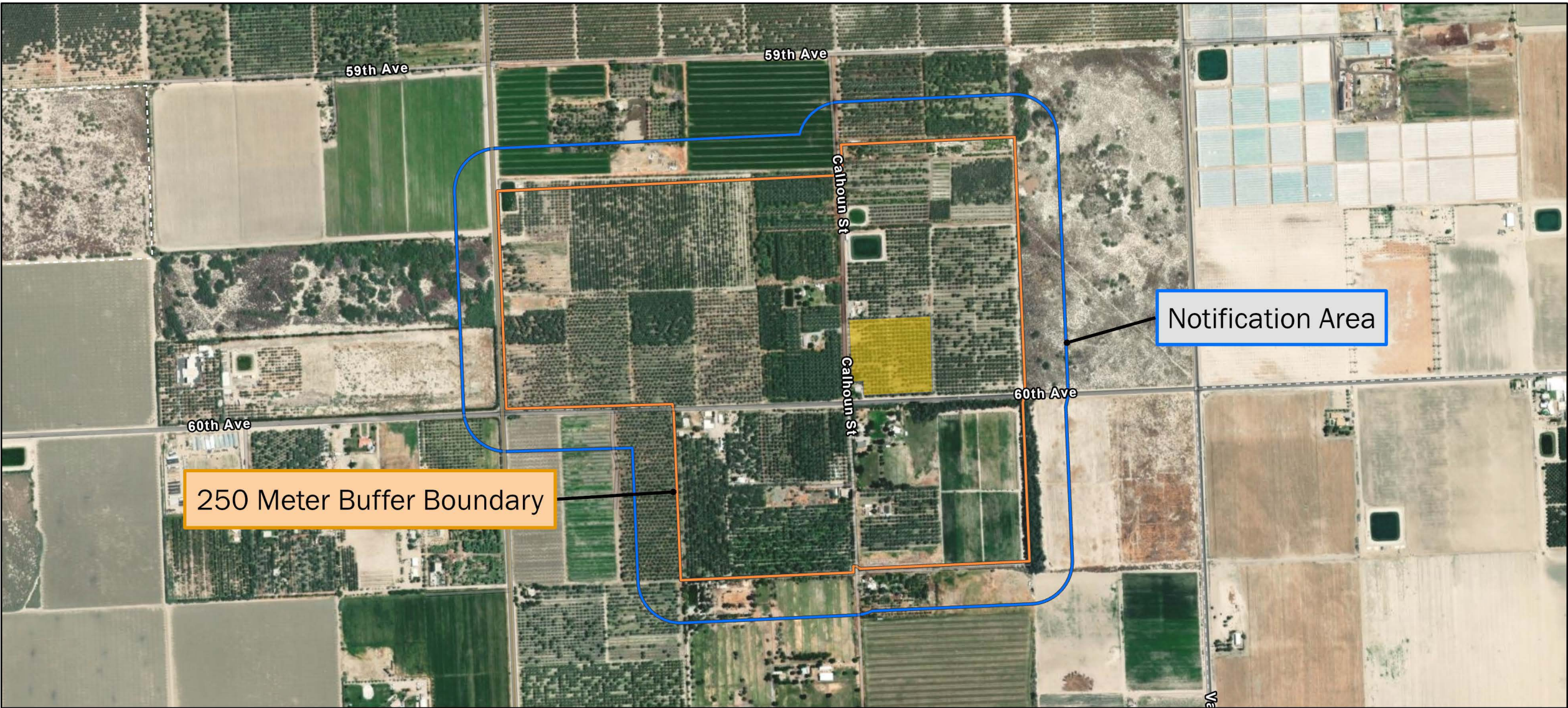







Asian Citrus Psyllid Treatment
Public Meeting Map (Page 1) - 01/10/2023
La Quinta
Riverside County
Printed 12/16/2022

-  250 Meter Buffer Boundary
-  Notification Boundary
-  Commercial Citrus

The 250 meter buffer boundary delineates the maximum geographical extent of the California Department of Food and Agriculture's treatment activities. Treatments will only be conducted on residential, industrial and rights of way properties with citrus and closely related host plants, not on production citrus orchards or nurseries.



Asian Citrus Psyllid Treatment
Public Meeting Map (Page 2) - 01/10/2023
Thermal, Vista Santa Rosa
Riverside County
Printed 12/16/2022

-  250 Meter Buffer Boundary
-  Notification Boundary
-  Commercial Citrus

The 250 meter buffer boundary delineates the maximum geographical extent of the California Department of Food and Agriculture's treatment activities. Treatments will only be conducted on residential, industrial and rights of way properties with citrus and closely related host plants, not on production citrus orchards or nurseries.



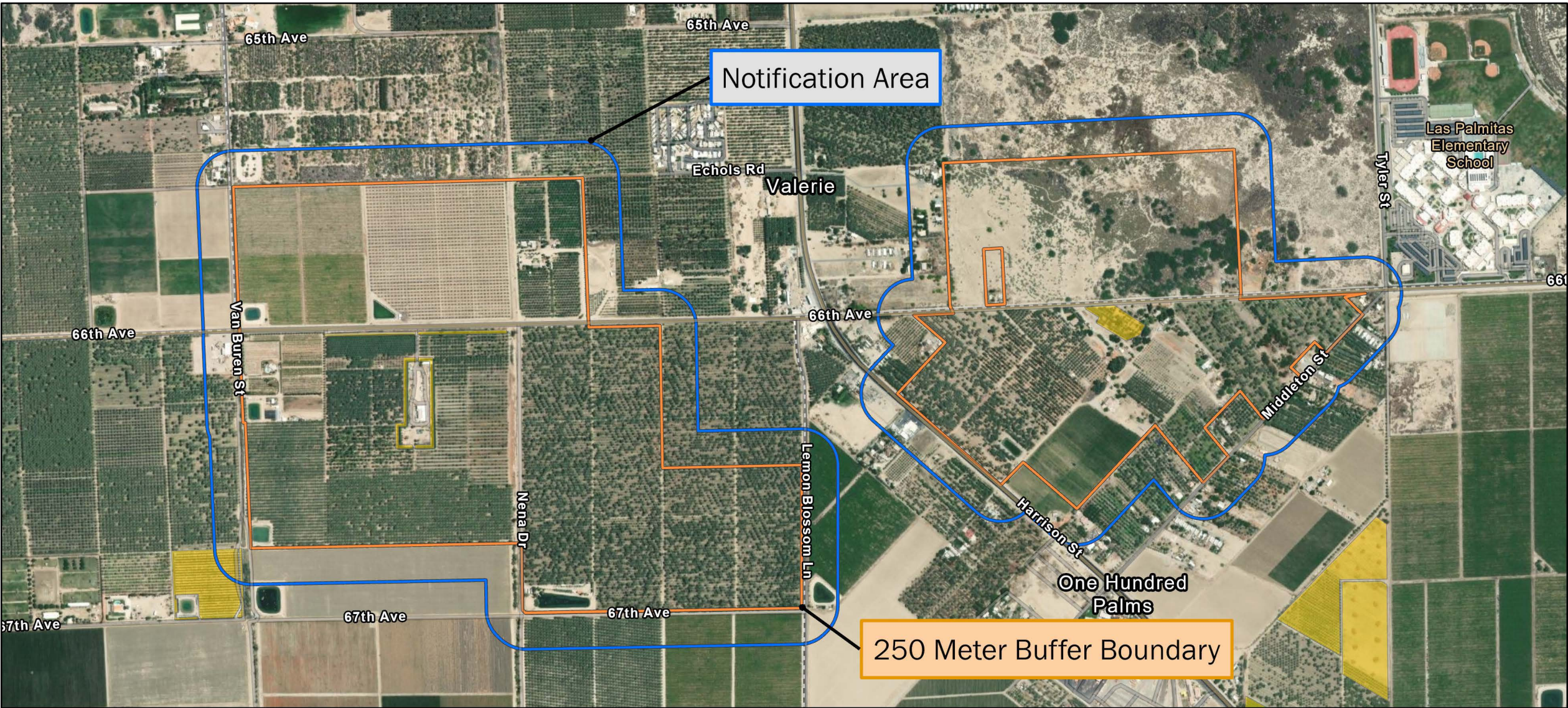
Meters
0300






CITRUS PEST & DISEASE
PREVENTION DIVISION



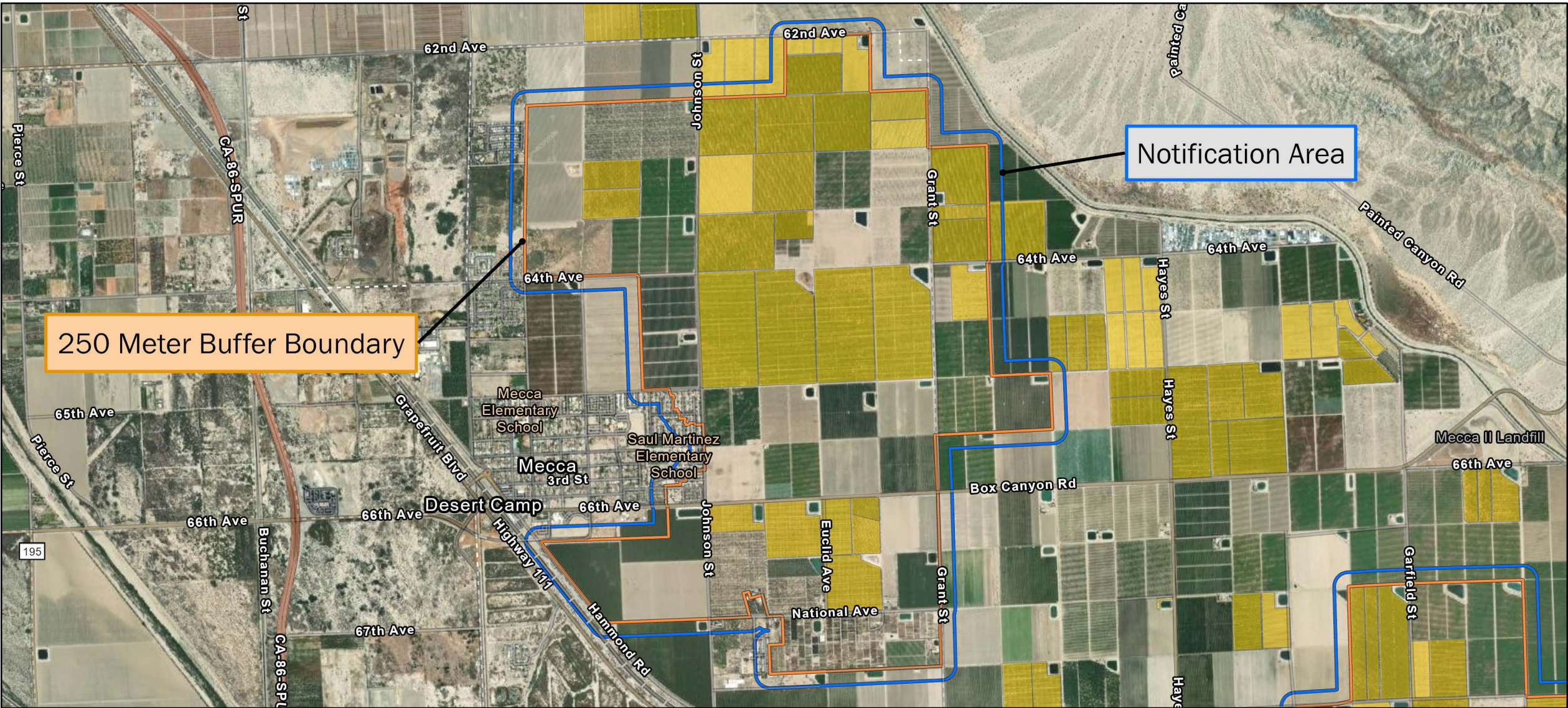
cdfa
CALIFORNIA DEPARTMENT OF
FOOD & AGRICULTURE






Asian Citrus Psyllid Treatment
Public Meeting Map (Page 3) - 01/10/2023
Oasis, Thermal
Riverside County
Printed 12/16/2022

-  250 Meter Buffer Boundary
-  Notification Boundary
-  Commercial Citrus

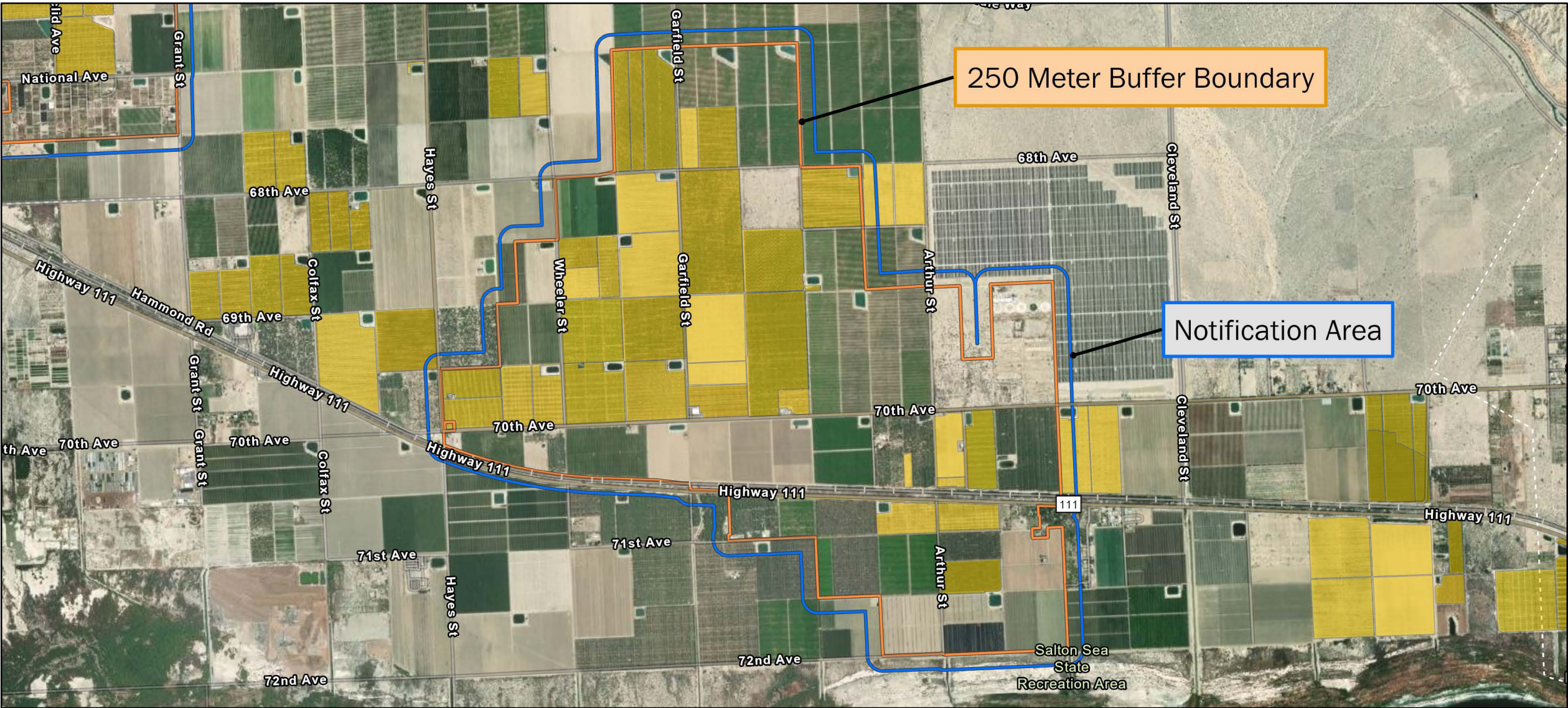
The 250 meter buffer boundary delineates the maximum geographical extent of the California Department of Food and Agriculture's treatment activities. Treatments will only be conducted on residential, industrial and rights of way properties with citrus and closely related host plants, not on production citrus orchards or nurseries.






Asian Citrus Psyllid Treatment
Public Meeting Map (Page 4) - 01/10/2023
Mecca
Riverside County
Printed 12/16/2022

-  250 Meter Buffer Boundary
-  Notification Boundary
-  Commercial Citrus


The 250 meter buffer boundary delineates the maximum geographical extent of the California Department of Food and Agriculture's treatment activities. Treatments will only be conducted on residential, industrial and rights of way properties with citrus and closely related host plants, not on production citrus orchards or nurseries.




Asian Citrus Psyllid Treatment
Public Meeting Map (Page 5) - 01/10/2023
Northshore
Riverside County
Printed 12/16/2022

-  250 Meter Buffer Boundary
-  Notification Boundary
-  Commercial Citrus

The 250 meter buffer boundary delineates the maximum geographical extent of the California Department of Food and Agriculture's treatment activities. Treatments will only be conducted on residential, industrial and rights of way properties with citrus and closely related host plants, not on production citrus orchards or nurseries.

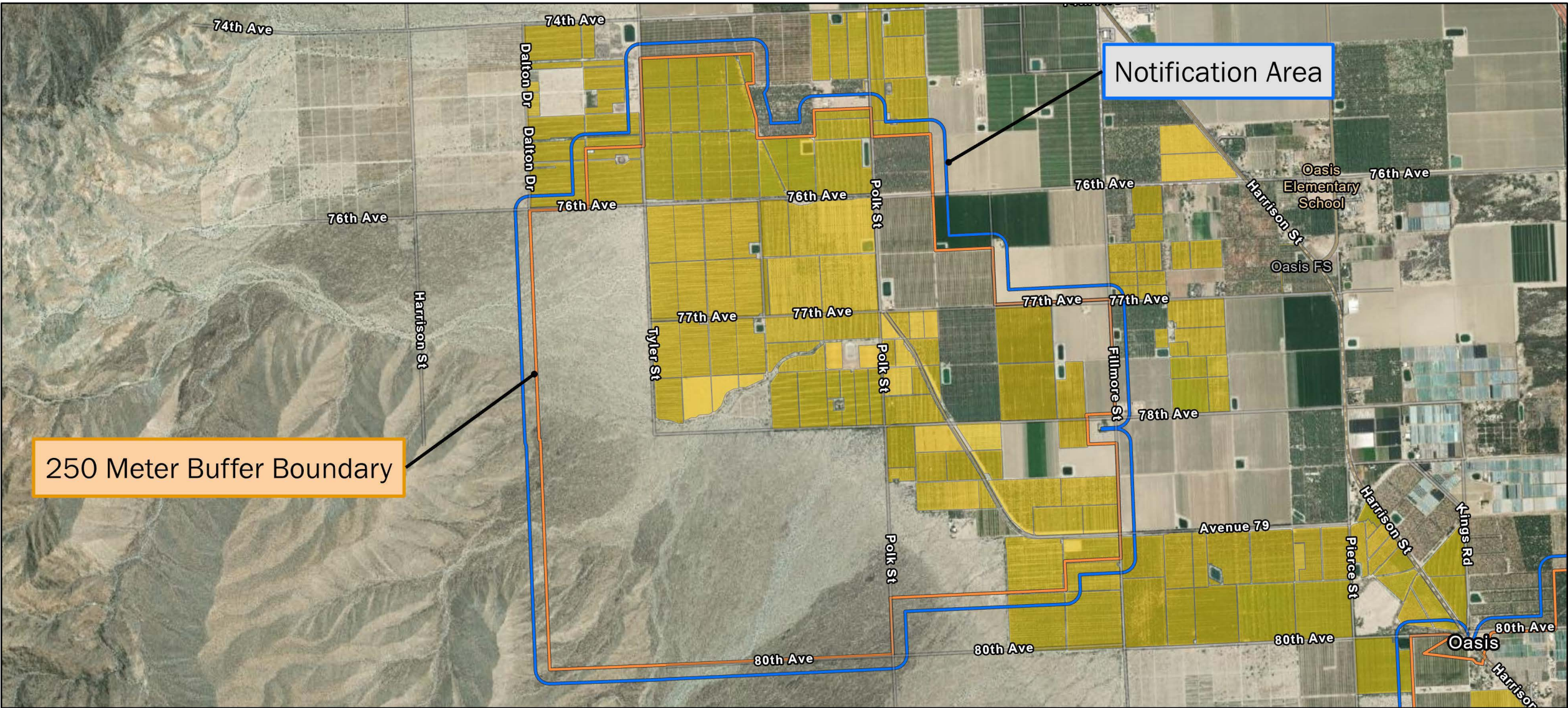


0 600 Meters



CITRUS PEST & DISEASE PREVENTION DIVISION

cdfa
CALIFORNIA DEPARTMENT OF FOOD & AGRICULTURE



250 Meter Buffer Boundary

Notification Area

Asian Citrus Psyllid Treatment
Public Meeting Map (Page 6) - 01/10/2023
Thermal
Riverside County
Printed 12/16/2022

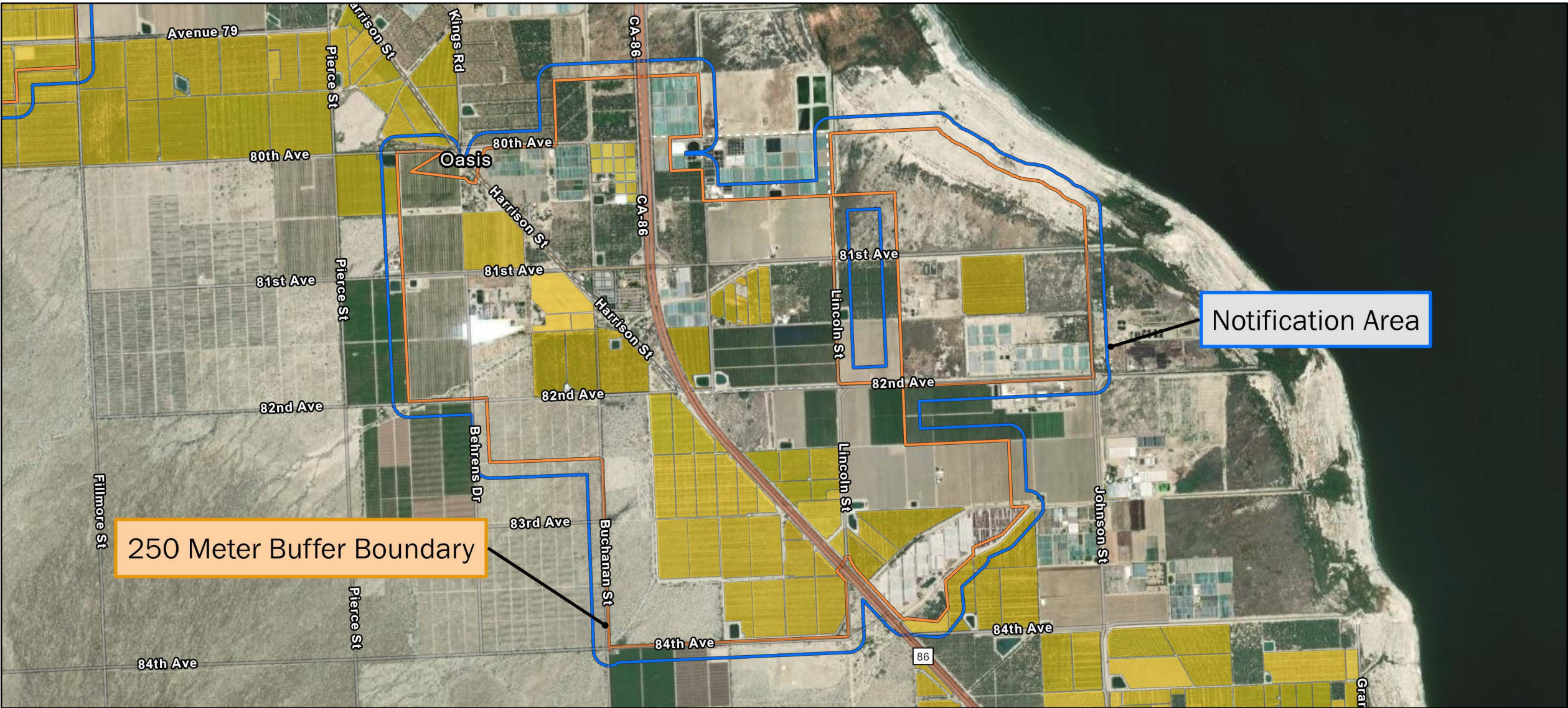


250 Meter Buffer Boundary
Notification Boundary
Commercial Citrus




The 250 meter buffer boundary delineates the maximum geographical extent of the California Department of Food and Agriculture's treatment activities. Treatments will only be conducted on residential, industrial and rights of way properties with citrus and closely related host plants, not on production citrus orchards or nurseries.

0 600 Meters







Asian Citrus Psyllid Treatment
Public Meeting Map (Page 7) - 01/10/2023
Oasis, Thermal
Riverside County
Printed 12/16/2022

-  250 Meter Buffer Boundary
-  Notification Boundary
-  Commercial Citrus


The 250 meter buffer boundary delineates the maximum geographical extent of the California Department of Food and Agriculture's treatment activities. Treatments will only be conducted on residential, industrial and rights of way properties with citrus and closely related host plants, not on production citrus orchards or nurseries.



0 600 Meters



CITRUS PEST & DISEASE PREVENTION DIVISION



cdfa
CALIFORNIA DEPARTMENT OF FOOD & AGRICULTURE